



Article

Glycosphingolipids Recognized by *Acinetobacter baumannii*

Miralda Madar Johansson¹, Mehjar Azzouz¹, Beatrice Häggendal¹, Karin Säljö² , Henri Malmi³, Anton Zaviolov³ and Susann Teneberg^{1,*}

¹ Institute of Biomedicine, Department of Medical Biochemistry and Cell Biology, Sahlgrenska Academy, University of Gothenburg, SE40530 Göteborg, Sweden; miralda.madar@gmail.com (M.M.J.); mehjar.azzouz@gu.se (M.A.); beahaggendal@hotmail.com (B.H.)

² Institute of Clinical Sciences, Department of Plastic Surgery, Sahlgrenska Academy, University of Gothenburg, SE41345 Göteborg, Sweden; karin.saljo@vgregion.se

³ Joint Biotechnology Laboratory, MediCity, Faculty of Medicine, University of Turku, FI25020 Turku, Finland; hsmmal@utu.fi (H.M.); anton.zavialov@utu.fi (A.Z.)

* Correspondence: Susann.Teneberg@medkem.gu.se

Received: 19 March 2020; Accepted: 19 April 2020; Published: 23 April 2020



Abstract: *Acinetobacter baumannii* is an opportunistic bacterial pathogen associated with hospital-acquired infections, including pneumonia, meningitis, bacteremia, urinary tract infection, and wound infections. Recognition of host cell surface carbohydrates plays a crucial role in adhesion and enables microbes to colonize different host niches. Here the potential glycosphingolipid receptors of *A. baumannii* were examined by binding of ³⁵S-labeled bacteria to glycosphingolipids on thin-layer chromatograms. Thereby a selective interaction with two non-acid glycosphingolipids of human and rabbit small intestine was found. The binding-active glycosphingolipids were isolated and, on the basis of mass spectrometry, identified as neolactotetraosylceramide (Galβ4GlcNAcβ3Galβ4Glcβ1Cer) and lactotetraosylceramide (Galβ3GlcNAcβ3Galβ4Glcβ1Cer). Further binding assays using reference glycosphingolipids showed that *A. baumannii* also bound to lactotriaosylceramide (GlcNAcβ3Galβ4Glcβ1Cer) demonstrating that GlcNAc was the basic element recognized. In addition, the bacteria occasionally bound to galactosylceramide, lactosylceramide with phytosphingosine and/or hydroxy fatty acids, isoglobotriaosylceramide, gangliotriaosylceramide, and gangliotetraosylceramide, in analogy with binding patterns that previously have been described for other bacteria classified as “lactosylceramide-binding”. Finally, by isolation and characterization of glycosphingolipids from human skin, the presence of neolactotetraosylceramide was demonstrated in this *A. baumannii* target tissue.

Keywords: microbial adhesion; *Acinetobacter baumannii*; glycosphingolipid structure; mass spectrometry; human skin glycosphingolipids

1. Introduction

Acinetobacter baumannii is emerging as a worldwide problem as a nosocomial pathogen in hospitalized patients. These bacteria primarily cause pneumonia, but they are also frequent causes of wound and burn infections, bacteremia, meningitis, urinary tract infections, and skin and soft tissue infections. The mortality associated with these infections is high. Isolates resistant to almost all available antimicrobials have been found, thus limiting treatment options. In fact, *A. baumannii* has been classified as highest priority on the recently published WHO list of pathogens needing research and development of new antibiotics [1].

The ability of *A. baumannii* to survive for an extended period of time on artificial surfaces allows it to persist in the hospital environment. This is due to its ability to form biofilms [2]. Biofilm formation in

A. baumannii is phenotypically associated with exopolysaccharide production and pilus formation [3]. The Csu pili are required for biofilm formation in *A. baumannii* but do not play a role in adherence to human epithelial cells [4]. Recently, the X-ray structure of the CsuC–CsuE chaperone–adhesin complex demonstrated that the tip protein CsuE has three hydrophobic finger-like loops [5]. This unique structural feature mediates bacterial adhesion to abiotic substrates.

Several different factors have been shown to be involved in the adherence of *A. baumannii* to human epithelial cells, as, e.g., the outer membrane protein A (OmpA), the biofilm-associated protein (BAP), the BAP-like proteins 1 and 2 (BLP-1 and BLP-2), the predicted pili subunit encoded by the *LH92_11085* gene, and *Acinetobacter* trimeric autotransporter adhesin (Ata) [6–10]. Several of these factors (OmpA, BAP, BLP-1, BLP-2, and the *LH92_11085* gene product) are also involved in biofilm formation, in line with the association found between biofilm production and human epithelial cell adherence [11,12].

Thus, a substantial amount of information about the *A. baumannii* factors involved in adherence to abiotic surfaces and epithelial cells is available. However, much less is known regarding the factors of epithelial cells that the bacteria bind to. Binding to specific receptors on the target cells allows microorganisms to colonize and cause infection and leads to an efficient delivery of virulence factors. The majority of microbial attachment sites on host cells and tissues identified are glycoconjugates [13,14]. In the present study, the potential carbohydrate recognition by *A. baumannii* bacterial cells was investigated by binding of *A. baumannii* bacteria to glycosphingolipids from various sources on thin-layer chromatograms.

2. Materials and Methods

2.1. *A. baumannii* Strains, Culture Conditions, and Labeling

A. baumannii strains CCUG 890, CCUG 60611, CCUG 68164, and CCUG 19096 were obtained from Culture Collection University of Gothenburg (CCUG). The bacteria were cultured aerobically on blood agar plates and were radiolabeled by the addition of 50 μCi ^{35}S -methionine (PerkinElmer; NEG77207MC) diluted in 0.5 mL phosphate-buffered saline (PBS), pH 7.3, to the culture plates. After incubation for 12 h at 37 °C under aerophilic conditions, the bacteria were harvested, centrifuged three times with PBS, and thereafter suspended in PBS containing 2% (*w/v*) bovine serum albumin, 0.1% (*w/v*) NaN_3 , 0.1% (*w/v*) Tween 20, and 1% (*w/v*) mannose (BSA/PBS/TWEEN/MANNOSE) to a bacterial density of 1×10^8 CFU/mL. The specific activity of the suspensions was approximately 1 cpm per 100 bacteria.

2.2. Reference Glycosphingolipids

Total acid and non-acid glycosphingolipid fractions were isolated as described [15]. Pure reference glycosphingolipids were isolated by repeated chromatography on silicic acid columns and by HPLC and identified by mass spectrometry [16,17] and ^1H -NMR spectroscopy [18].

2.3. Chromatogram Binding Assays

Thin-layer chromatography was done on aluminum-backed silica gel 60 high-performance thin-layer chromatography plates (Merck; 105641/105547). Glycosphingolipid mixtures (20–40 μg), or pure glycosphingolipids (1–4 μg), were applied to the plates, and eluted with chloroform/methanol/water (60:35:8, by volume). Chemical detection was done with anisaldehyde [19].

Binding of radiolabeled bacteria to glycosphingolipids on thin-layer chromatograms was done as described [20]. Dried chromatograms were dipped in diethylether/*n*-hexane (1:5 *v/v*) containing 0.5% (*w/v*) polyisobutylmethacrylate for 1 min. The chromatograms were blocked with BSA/PBS/TWEEN for 2 h at room temperature. Then the plates were incubated for 2 h at room temperature with ^{35}S -labeled bacteria ($1\text{--}5 \times 10^6$ cpm/mL) diluted in BSA/PBS/TWEEN/MANNOSE. After washing six times with

PBS and drying, the plates were autoradiographed for 12–36 h using XAR-5 X-ray films (Carestream; 8941114).

Chromatogram binding assays with ^{125}I -labeled *Erythrina crista-galli* lectin and *A. baumannii* CsuC–CsuE protein [5] were done as described [21].

2.4. Isolation of the *A. baumannii* Binding Tetraglycosylceramide from Human Small Intestine

A non-acid glycosphingolipid fraction (20 mg) from a human small intestine from our glycosphingolipid collection was first separated by chromatography on a 4 g Iatrobeds (6RS-8060, Iatron Laboratories Inc., Tokyo, Japan;) column eluted with chloroform/methanol/water 60:35:8 (by volume), 27×1 mL. The fractions obtained were analyzed by thin-layer chromatography and anisaldehyde staining, and the *A. baumannii* binding activity was assessed using the chromatogram binding assay. The fractions were pooled according to the mobility on thin-layer chromatograms and their *A. baumannii* binding activity. This resulted in an *A. baumannii* binding fraction (8.4 mg) containing mono- to tetraglycosylceramides, which was further separated on a 2 g Iatrobeds column eluted with chloroform/methanol/water 65:25:4 (by volume), 18×1 mL. Pooling of the *A. baumannii* binding subfractions gave a fraction (1.7 mg), which was separated on a 1 g Iatrobeds column eluted with chloroform/methanol/water 60:35:8 (by volume), 10×0.5 mL. This gave a fraction containing the *A. baumannii* binding tetraglycosylceramide (1.4 mg). This fraction was designated fraction HI-4.

2.5. Isolation of the *A. baumannii* Binding Tetraglycosylceramide from Rabbit Intestine

The non-acid glycosphingolipid fraction (34 mg) from rabbit intestine from our glycosphingolipid collection was separated in a similar manner. The first separation was done on a 2 g Iatrobeds column eluted with chloroform/methanol/water 60:35:8 (by volume), 24×1 mL. *A. baumannii* binding fractions were pooled (giving 6.3 mg) and then further separated on a 2 g Iatrobeds column eluted with chloroform/methanol/water 65:25:4 (by volume), 17×1 mL. Thereby an *A. baumannii* binding tetraglycosylceramide fraction (1.1 mg) was obtained (designated fraction RI-4).

2.6. Isolation of Glycosphingolipids from Human Skin

Full-thickness skin grafts were collected with ethical approval (Dnr-624-16; decision 2016-11-20) after informed consent, at the Department of Plastic Surgery, Sahlgrenska University Hospital. The material was lyophilized and acid and non-acid glycosphingolipids were thereafter isolated as described [15]. Briefly, the material (24.2 g dry weight) was extracted in two steps in a Soxhlet apparatus with chloroform and methanol (2:1 and 1:9, by volume, respectively). The material thereby obtained was subjected to mild alkaline hydrolysis and dialysis, followed by separation on a silicic acid column. Acid and non-acid glycosphingolipid fractions were obtained by chromatography on a DEAE-cellulose column. In order to separate the non-acid glycosphingolipids from alkali-stable phospholipids, the non-acid fraction was acetylated and separated on a second silicic acid column, followed by deacetylation and dialysis. Final purifications were done by chromatographies on DEAE-cellulose and silicic acid columns. Thereby, 28 mg of total non-acid glycosphingolipids was obtained. The total non-acid glycosphingolipid fraction was separated into subfractions by chromatography on a 1 g Iatrobeds column eluted with increasing amounts of methanol in chloroform (10 mL of 10% of methanol in chloroform (by volume), 10 mL of 25% of methanol in chloroform, 10 mL of 33% methanol in chloroform, 10 mL of 75% methanol in chloroform, and 10 mL of 100% methanol). Thereby five glycosphingolipid containing fractions were obtained which were denoted fractions S-1–S-5.

2.7. Endoglycoceramidase Digestion and Liquid Chromatography/Electrospray Ionization Mass Spectrometry

Endoglycoceramidase II from *Rhodococcus* spp. (Takara Bio Europe S.A., Gennevilliers, France) was used for hydrolysis of glycosphingolipids, and the oligosaccharides obtained were analyzed by liquid chromatography–electrospray ionization–mass spectrometry (LC-ESI/MS) [17]. In brief, the oligosaccharides were separated on a column (200×0.180 mm) packed in-house with $5 \mu\text{m}$ porous

graphite particles (Hypercarb, Thermo Fischer Scientific, Waltham, MA, USA) and eluted with an acetonitrile gradient (A: 8 mM ammonium bicarbonate; B: 100% acetonitrile). The saccharides were analyzed in the negative ion mode on an LTQ linear quadrupole ion trap mass spectrometer (Thermo Electron, San José, CA, USA). The IonMax standard ESI source on the LTQ mass spectrometer was equipped with a stainless-steel needle kept at -3.5 kV. Compressed air was used as a nebulizer gas. The heated capillary was kept at 270 °C, and the capillary voltage was -50 kV. Full-scan (m/z 380–2000, 2 microscans, maximum 100 ms, target value of 30,000) was performed, followed by data dependent MS^2 scans of the three most abundant ions in each scan (2 microscans, maximum 100 ms, target value of 10,000). The threshold for MS^2 was set to 500 counts. Normalized collision energy was 35%, and an isolation window of 3 u, an activation $q = 0.25$, and an activation time of 30 ms, was used. The conditions for MS^3 and MS^4 were the same, except that the thresholds were set to 300 and 100 counts, respectively.

2.8. Inhibition Experiments

A. baumannii 890 cells were preincubated with PBS buffer or 1:100 dilutions of antibodies raised against the N-terminal domain of CsuE (α EN) [5] for 2 h, and then assayed for binding to pure reference glycosphingolipids on thin-layer chromatograms, as described above.

3. Results

3.1. Screening for *A. baumannii* Carbohydrate Recognition

In the initial screening for carbohydrate recognition by *A. baumannii*, mixtures of glycosphingolipids from various sources were used in order to expose the bacteria to a large number of variant carbohydrate structures. Thus, the binding of the *A. baumannii* strains to acid and non-acid glycosphingolipid mixtures isolated from the small intestine of different species (human, rat, cat, rabbit, dog, monkey, and pig), erythrocytes of different species (human, cat, rabbit, dog, horse, chicken, and sheep), human cancers (lung cancer, kidney cancer, colon cancer, liver cancer, and gastric cancer), and rabbit thymus was tested. There was no binding of *A. baumannii* to any acid glycosphingolipids. However, in most non-acid glycosphingolipid fractions a binding of the bacteria to compounds migrating in the mono- and diglycosylceramide regions was observed (exemplified in Figure 1, lanes 1–4). In addition, a number of more slow-migrating glycosphingolipids in the non-acid fractions of rabbit small intestine, rabbit thymus, rat intestine, and human small intestine were distinctly recognized by the bacteria (Figure 1, lanes 1–4).

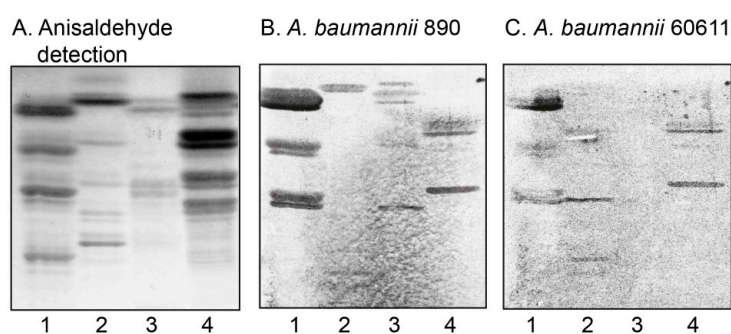


Figure 1. Screening for *Acinetobacter baumannii* carbohydrate recognition by binding to glycosphingolipids on thin-layer chromatograms. Chemical detection by anisaldehyde (A), and autoradiograms obtained by binding of *A. baumannii* strain CCUG 890 (B), and *A. baumannii* strain CCUG 60611 (C), followed by autoradiography for 12 h, as described under “Materials and Methods”. The solvent system used was chloroform/methanol/water (60:35:8, by volume). The lanes were: Lane 1, non-acid glycosphingolipids of rabbit small intestine, 40 μ g; Lane 2, non-acid glycosphingolipids of rabbit thymus, 40 μ g; Lane 3, non-acid glycosphingolipids of rat intestine, 40 μ g; Lane 4, non-acid glycosphingolipids of human small intestine, 40 μ g.

During these initial experiments, we also examined the potential carbohydrate binding of *A. baumannii* CsuC–CsuE protein [5], using ^{125}I -labeled protein in chromatogram binding assays. However, no glycosphingolipid binding was observed.

3.2. Isolation of *A. baumannii* Binding Tetraglycosylceramides from Human and Rabbit Small Intestine

The *A. baumannii* binding compounds migrating in the tetraglycosylceramide region from rabbit and human small intestine (Figure 1, lanes 1 and 4) were both isolated by chromatography on Iatrobeads columns. The fractions obtained were examined for *A. baumannii* binding on thin-layer chromatograms and pooled according to the mobility on thin-layer chromatograms and their *A. baumannii* binding activity. After several separation steps, 1.1 mg of the *A. baumannii* binding tetraglycosylceramide fraction from rabbit intestine (designated fraction RI-4) (Figure 2A,B, lane 6), and 1.4 mg of the *A. baumannii* binding tetraglycosylceramide fraction from human intestine (designated fraction HI-4) (Figure 2C,D, lane 4), were obtained.

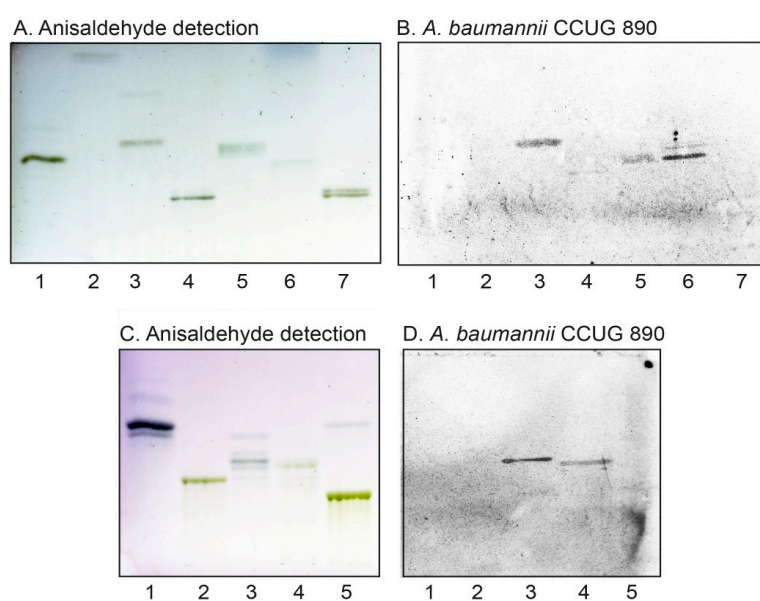


Figure 2. *A. baumannii* binding glycosphingolipids isolated from rabbit small intestine (fraction RI-4) and human small intestine (fraction HI-4). Chemical detection by anisaldehyde (A,C), and autoradiograms obtained by binding of *A. baumannii* strain CCUG 890 (B,D), followed by autoradiography for 12 h, as described under “Materials and Methods”. The solvent system used was chloroform/methanol/water (60:35:8, by volume). The lanes on A and B were: Lane 1, globotetraosylceramide ($\text{GalNAc}\beta 3\text{Gal}\alpha 4\text{Gal}\beta 4\text{Glc}\beta 1\text{Cer}$), 4 μg ; Lane 2, galactosylceramide ($\text{Gal}\beta 1\text{Cer}$), 4 μg ; Lane 3, gangliotriaosylceramide ($\text{GalNAc}\beta 4\text{Gal}\beta 4\text{Glc}\beta 1\text{Cer}$), 4 μg ; Lane 4, Galili pentaosylceramide ($\text{Gal}\alpha 3\text{Gal}\beta 4\text{GlcNAc}\beta 3\text{Gal}\beta 4\text{Glc}\beta 1\text{Cer}$), 4 μg ; Lane 5, isoglobotriaosylceramide ($\text{Gal}\alpha 3\text{Gal}\beta 4\text{Glc}\beta 1\text{Cer}$), 4 μg ; Lane 6, fraction RI-4 from rabbit small intestine, 4 μg ; Lane 7, gangliotetraosylceramide ($\text{Gal}\beta 3\text{GalNAc}\beta 4\text{Gal}\beta 4\text{Glc}\beta 1\text{Cer}$), 4 μg . The lanes on (C,D) were: Lane 1, globotriaosylceramide ($\text{Gal}\alpha 4\text{Gal}\beta 4\text{Glc}\beta 1\text{Cer}$), 4 μg ; Lane 2, H type 2 pentaosylceramide ($\text{Fuc}\alpha 2\text{Gal}\beta 4\text{GlcNAc}\beta 3\text{Gal}\beta 4\text{Glc}\beta 1\text{Cer}$), 4 μg ; Lane 3, lactotetraosylceramide ($\text{Gal}\beta 3\text{GlcNAc}\beta 3\text{Gal}\beta 4\text{Glc}\beta 1\text{Cer}$), 4 μg ; Lane 4, fraction HI-4 from human small intestine, 4 μg ; Lane 5, B type 2 hexaosylceramide ($\text{Gal}\alpha 3(\text{Fuc}\alpha 2)\text{Gal}\beta 4\text{GlcNAc}\beta 3\text{Gal}\beta 4\text{Glc}\beta 1\text{Cer}$), 4 μg .

Aliquots of fractions HI-4 and RI-4 were digested with endoglycoceramidase II from *Rhodococcus* spp., and the oligosaccharides obtained were analyzed by LC-ESI/MS, as described below.

3.3. LC-ESI/MS of the Human Small Intestinal Glycosphingolipid Recognized by *A. baumannii*

LC-ESI/MS of oligosaccharides using porous graphitized carbon (PGC) columns gives resolution of isomeric oligosaccharides, and the carbohydrate sequence can be deduced from series of C-type fragment ions obtained by MS/MS (MS^2) [17,22,23]. Furthermore, MS^2 spectra of oligosaccharides with a Hex or HexNAc substituted at C-4 have diagnostic cross-ring $^{0,2}A$ -type fragment ions ($^{0,2}A$ and $^{0,2}A-H_2O$), which allow differentiation of linkage positions. Thus, such $^{0,2}A$ -type fragment ions are found in MS^2 spectra of oligosaccharides with globo (Gal α 4Gal) or neolacto/type 2 (Gal β 4GlcNAc) core structures but are absent in the spectra obtained from oligosaccharides with isoglobo (Gal α 3Gal) or lacto/type 1 (Gal β 3GlcNAc) core chains.

The base chromatogram from LC-ESI/MS of fraction HI-4A had molecular ion at m/z 706, demonstrating an oligosaccharide with one HexNAc and three Hex. MS^2 of this ion (Figure 3A) gave a C-type fragment ion series (C_2 at m/z 382 and C_3 at m/z 544) identifying an oligosaccharide with Hex-HexNAc-Hex-Hex sequence. The spectrum had a distinct $^{0,2}A_2-H_2O$ fragment ion at m/z 263 and a $^{0,2}A_3$ fragment ion at m/z 281, demonstrating a terminal Hex-HexNAc sequence with a 4-substitution of the HexNAc, i.e., a type 2 chain [17,22,23]. The $^{0,2}A_4$ ion at m/z 646 and the $^{0,2}A_3-H_2O$ ion at m/z 628 were most likely derived from cross-ring cleavages of the 4-substituted Glc of the internal lactose (Gal β 4Glc) part. Taken together, a neolacto tetrasaccharide (Gal β 4GlcNAc β 3Gal β 4Glc) was thus tentatively identified.

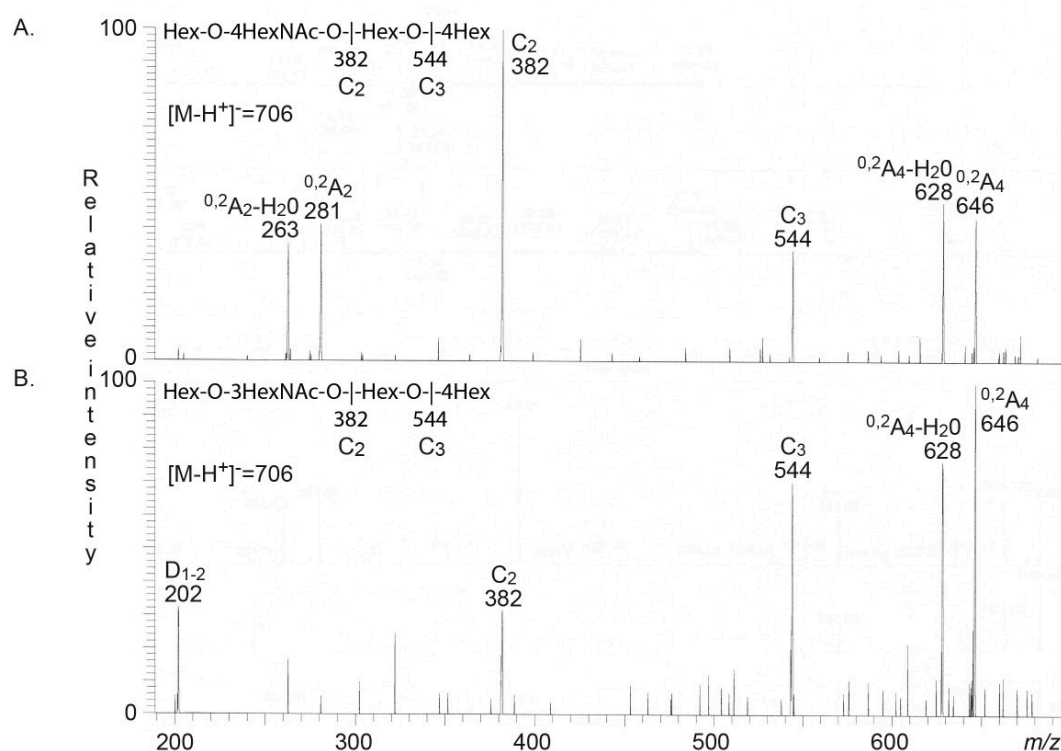


Figure 3. Characterization of the *A. baumannii* binding glycosphingolipids isolated from human and rabbit small intestine. (A) MS^2 spectrum of the ion at m/z 706 (retention time 21.4 min) from liquid chromatography–electrospray ionization–mass spectrometry (LC-ESI/MS) of the oligosaccharides derived from the *A. baumannii* binding glycosphingolipid fraction HI-4 from human small intestine by digestion with *Rhodococcus* endoglycoceramidase II. The interpretation formula shows the deduced oligosaccharide sequence. (B) MS^2 spectrum of the ion at m/z 706 (retention time 21.1 min) from LC-ESI/MS of the oligosaccharides derived from the *A. baumannii* binding glycosphingolipid fraction RI-4 from rabbit small intestine by digestion with *Rhodococcus* endoglycoceramidase II. The interpretation formula shows the deduced oligosaccharide sequence.

3.4. LC-ESI/MS of the Rabbit Small Intestinal Glycosphingolipid Recognized by *A. baumannii*

The base chromatogram from LC-ESI/MS of fraction RI-4 also had a molecular ion at m/z 706 demonstrating an oligosaccharide with one HexNAc and three Hex. MS² of this ion (Figure 3B) also gave a C-type fragment ion series (C₂ at m/z 382 and C₃ at m/z 544) identifying a Hex-HexNAc-Hex-Hex sequence. However, this MS² spectrum had a prominent D₁₋₂ ion at m/z 202, which is obtained by a C₂-Z₂ double cleavage, and diagnostic for a 3-substituted HexNAc [22]. No ^{0,2}A₂-H₂O fragment ion at m/z 263, or ^{0,2}A₃ fragment ion at m/z 281, indicating 4-substitution of the HexNAc were present. The ^{0,2}A₄-H₂O fragment ion at m/z 628 and the ^{0,2}A₄ fragment ion at m/z 646 were derived from cross-ring cleavages of the 4-substituted Glc of the lactose at the reducing end. No ^{0,2}A₃ fragment ion at m/z 484 was present, demonstrating that the Gal of the lactose unit was 3-substituted. Taken together, these spectral features identified a lacto tetrasaccharide (Galβ3GlcNAcβ3Galβ4Glc).

Thus, the human small intestinal glycosphingolipid recognized by *A. baumannii* was tentatively identified as neolactotetraosylceramide (Galβ4GlcNAcβ3Galβ4Glcβ1Cer), while the *A. baumannii* binding glycosphingolipid of rabbit small intestine was tentatively identified as lactotetraosylceramide (Galβ3GlcNAcβ3Galβ4Glcβ1Cer).

3.5. Binding to Reference Glycosphingolipids

Thereafter the binding of *A. baumannii* to defined amounts of a number of reference glycosphingolipids structurally related to neolactotetraosylceramide and lactotetraosylceramide was evaluated. The results are exemplified in Figure 4 and summarized in Table 1. Thereby we found that *A. baumannii* bound to lactotriaosylceramide (Figure 4E,F, lane 2), in addition to neolactotetraosylceramide and lactotetraosylceramide. The binding of the bacteria was abolished by substitution of neolactotetraosylceramide or lactotetraosylceramide with an αFuc in the 2-position of the terminal Gal (creating the H type 2 (Figure 4A,B, lane 1, and Figure 4E,F, lane 4) or H type 1 (Figure 4A,B, lane 5) pentaosylceramides). The same effect was obtained by an αFuc in the 3- or 4-position of the internal GlcNAc position (creating the Le^a pentaosylceramide (Figure 4A,B, lane 6) or the Le^x pentaosylceramide (no. 12 in Table 1). Substitution in the 3-position of the terminal Gal of neolactotetraosylceramide with an αGal (Figure 2A,C, lane 4), or a Neu5Ac or Neu5Gc (Figure 4C,D, lanes 1–3, 5) also abolished the binding. Thus, the minimal requirement for *A. baumannii* glycosphingolipid binding is a GlcNAc, which may be substituted with Galβ3 (lactotetraosylceramide) or Galβ4 (neolactotetraosylceramide). However, further substitutions of the Galβ3GlcNAc or Galβ4GlcNAc sequences abrogates the binding of the bacteria.

Further binding assays using reference glycosphingolipids showed that *A. baumannii* also bound to galactosylceramide (Figure 5A–E, lane 1), lactosylceramide with phytosphingosine and/or hydroxy fatty acids (lane 2), isoglobotriaosylceramide (no. 28 in Table 1), gangliotriaosylceramide (lane 3), and gangliotetraosylceramide (no. 7 in Table 1). While the binding of *A. baumannii* to lactotriaosylceramide, neolactotetraosylceramide, and lactotetraosylceramide was highly reproducible, binding to these compounds was only occasionally obtained. This is exemplified in Figure 2B where galactosylceramide (lane 2) and gangliotetraosylceramide (lane 7) were non-binding, and the bacteria only bound to gangliotriaosylceramide (lane 3), isoglobotriaosylceramide (lane 5), and lactotetraosylceramide from rabbit intestine (lane 6). Binding to lactosylceramide, isoglobotriaosylceramide, gangliotriaosylceramide, and gangliotetraosylceramide has previously been described for other bacteria classified as “lactosylceramide-binding” [14]. The binding of *A. baumannii* to fast-migrating compounds in glycosphingolipid mixtures (exemplified in Figure 1B,C) is thus most likely due to recognition of galactosylceramide and lactosylceramide.

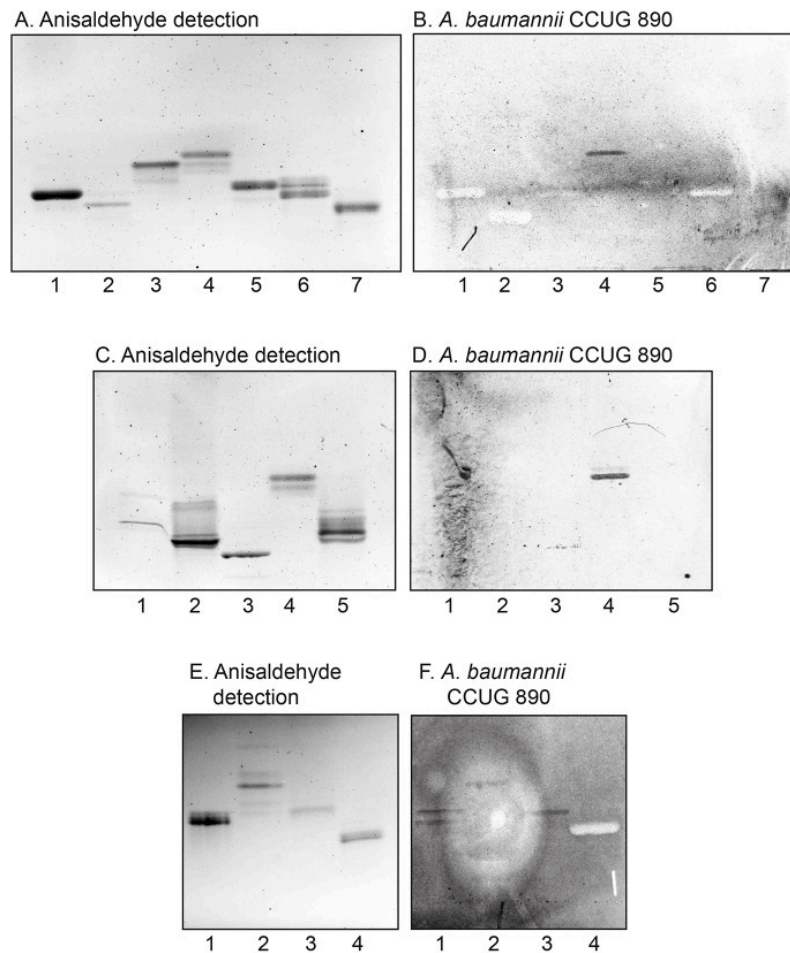


Figure 4. Binding of *A. baumannii* to reference glycosphingolipids on thin-layer chromatograms. Thin-layer chromatograms stained with anisaldehyde (A,C,E) and autoradiograms obtained by binding of ^{35}S -labeled *A. baumannii* strain CCUG 890 (B,D,F), followed by autoradiography for 12 h, as described under “Materials and Methods”. The solvent system used was chloroform/methanol/water (60:35:8, by volume). The lanes on (A,B) were: Lane 1, H type 2 pentaosylceramide ($\text{Fuc}\alpha 2\text{Gal}\beta 4\text{GlcNAc}\beta 3\text{Gal}\beta 4\text{Glc}\beta 1\text{Cer}$), 4 μg ; Lane 2, B type 2 hexaosylceramide ($\text{Gal}\alpha 3(\text{Fuc}\alpha 2)\text{Gal}\beta 4\text{GlcNAc}\beta 3\text{Gal}\beta 4\text{Glc}\beta 1\text{Cer}$), 2 μg ; Lane 3, globotetraosylceramide ($\text{GalNAc}\beta 3\text{Gal}\alpha 4\text{Gal}\beta 4\text{Glc}\beta 1\text{Cer}$), 4 μg ; Lane 4, lactotetraosylceramide ($\text{Gal}\beta 3\text{GlcNAc}\beta 3\text{Gal}\beta 4\text{Glc}\beta 1\text{Cer}$), 4 μg ; Lane 5, H type 1 pentaosylceramide ($\text{Fuc}\alpha 2\text{Gal}\beta 4\text{GlcNAc}\beta 3\text{Gal}\beta 4\text{Glc}\beta 1\text{Cer}$), 4 μg ; Lane 6, Le^a pentaosylceramide ($\text{Gal}\beta 3(\text{Fuc}\alpha 4)\text{GlcNAc}\beta 3\text{Gal}\beta 4\text{Glc}\beta 1\text{Cer}$), 4 μg ; Lane 7, Le^b hexaosylceramide ($\text{Fuc}\alpha 2\text{Gal}\beta 3(\text{Fuc}\alpha 4)\text{GlcNAc}\beta 3\text{Gal}\beta 4\text{Glc}\beta 1\text{Cer}$), 4 μg . The lanes on (C,D) were: Lane 1, $\text{NeuAc}\alpha 3\text{neolactotetraosylceramide}$ ($\text{NeuAc}\alpha 3\text{-Gal}\beta 4\text{GlcNAc}\beta 3\text{Gal}\beta 4\text{Glc}\beta 1\text{Cer}$), 2 μg ; Lane 2, $\text{NeuGc}\alpha 3\text{neolactotetraosylceramide}$ ($\text{NeuGc}\alpha 3\text{Gal}\beta 4\text{GlcNAc}\beta 3\text{Gal}\beta 4\text{Glc}\beta 1\text{Cer}$), 4 μg ; Lane 3, $\text{NeuGc}\alpha 3\text{neolactohexa-osylceramide}$ ($\text{NeuGc}\alpha 3\text{Gal}\beta 4\text{GlcNAc}\beta 3\text{Gal}\beta 4\text{GlcNAc}\beta 3\text{Gal}\beta 4\text{Glc}\beta 1\text{Cer}$), 4 μg ; Lane 4, lactotetraosylceramide ($\text{Gal}\beta 3\text{GlcNAc}\beta 3\text{Gal}\beta 4\text{Glc}\beta 1\text{Cer}$), 4 μg ; Lane 5, $\text{NeuAc}\alpha 3\text{lactotetraosylceramide}$ ($\text{NeuAc}\alpha 3\text{Gal}\beta 3\text{GlcNAc}\beta 3\text{Gal}\beta 4\text{Glc}\beta 1\text{Cer}$), 4 μg . The lanes on (E,F) were: Lane 1, neolactotetraosylceramide ($\text{Gal}\beta 4\text{GlcNAc}\beta 3\text{Gal}\beta 4\text{Glc}\beta 1\text{Cer}$), 4 μg ; Lane 2, lactotriaosylceramide ($\text{GlcNAc}\beta 3\text{Gal}\beta 4\text{Glc}\beta 1\text{Cer}$), 4 μg ; Lane 3, lactotetraosylceramide ($\text{Gal}\beta 3\text{GlcNAc}\beta 3\text{Gal}\beta 4\text{Glc}\beta 1\text{Cer}$), 4 μg ; Lane 4, H type 2 pentaosylceramide ($\text{Fuc}\alpha 2\text{Gal}\beta 4\text{GlcNAc}\beta 3\text{Gal}\beta 4\text{Glc}\beta 1\text{Cer}$), 4 μg .

Table 1. Binding of *Acinetobacter baumannii* to reference glycosphingolipids on thin-layer chromatograms.

No.	Trivial Name	Structure	Binding ^a	Source
Simple compounds				
1.	GalCer (d18:1-h24:0) ^b	Gal β 1Cer	(+)	Porcine intestine
2.	Sulfatide	SO ₃ -Gal β 1Cer	-	Porcine intestine
3.	LacCer (d18:1-16:0-24:0)	Gal β 4Glc β 1Cer	-	Human neutrophils
4.	LacCer (t18:0-h16:0-h24:0)	Gal β 4Glc β 1Cer	+	Dog intestine
Ganglioseries				
5.	Gangliotri	GalNAc β 4Gal β 4Glc β 1Cer	(+)	Guinea pig erythrocytes
6.	Gangliotetra	Gal β 3GalNAc β 4Gal β 4Glc β 1Cer	(+)	Mouse intestine
7.	GD1a	NeuAc α 3Gal β 3GalNAc β 4(NeuAc α 3)Gal β 4Glc β 1Cer	-	Human brain
Neolactoseries				
8.	Lactotri	GlcNAc β 3Gal β 4Glc β 1Cer	+	Porcine intestine
9.	Neolactotetra	Gal β 4GlcNAc β 3Gal β 4Glc β 1Cer	+	Human neutrophils
10.	H type 2 penta	Fuc α 2Gal β 4GlcNAc β 3Gal β 4Glc β 1Cer	-	Human erythrocytes
11.	Le ^x penta	Gal β 4(Fuc α 3)GlcNAc β 3Gal β 4Glc β 1Cer	-	Dog intestine
12.	B penta	Gal α 3Gal β 4GlcNAc β 3Gal β 4Glc β 1Cer	-	Rabbit erythrocytes
13.	Le ^y hexa	Fuc α 2Gal β 4(Fuc α 3)GlcNAc β 3Gal β 4Glc β 1Cer	-	Dog intestine
14.	B type 2 hexa	Gal α 3(Fuc α 2)Gal β 4GlcNAc β 3Gal β 4Glc β 1Cer	-	Human erythrocytes
15.	B type 2 hepta	Gal α 3(Fuc α 2)Gal β 4(Fuc α 3)GlcNAc β 3Gal β 4Glc β 1Cer	-	Human erythrocytes
16.	A type 2 hepta	GalNAc α 3(Fuc α 2)Gal β 4(Fuc α 3)GlcNAc β 3Gal β 4Glc β 1Cer	-	Human erythrocytes
17.	NeuAc α 3-neolactotetra	NeuAc α 3Gal β 4GlcNAc β 3Gal β 4Glc β 1Cer	-	Human erythrocytes
18.	NeuAc α 6-neolactotetra	NeuAc α 6Gal β 4GlcNAc β 3Gal β 4Glc β 1Cer	-	Human meconium
19.	NeuGc α 3-neolactotetra	NeuGc α 3Gal β 4GlcNAc β 3Gal β 4Glc β 1Cer	-	Goat erythrocytes
20.	NeuGc α 3-neolactohexa	NeuGc α 3Gal β 4GlcNAc β 3Gal β 4GlcNAc β 3Gal β 4Glc β 1Cer	-	Rabbit thymus

Table 1. Binding of *Acinetobacter baumannii* to reference glycosphingolipids on thin-layer chromatograms.

No.	Trivial Name	Structure	Binding ^a	Source
21.	Lactotetra	Gal β 3GlcNAc β 3Gal β 4Glc β 1Cer	+	Human meconium
22.	Le ^a penta	Gal β 3(Fuc α 4)GlcNAc β 3Gal β 4Glc β 1Cer	-	Human intestine
23.	Le ^b hexa	Fuc α 2Gal β 3(Fuc α 4)GlcNAc β 3Gal β 4Glc β 1Cer	-	Human meconium
24.	NeuAc-lactotetra	NeuAc α 3Gal β 3GlcNAc β 3Gal β 4Glc β 1Cer	-	Human pancreas cancer
Globoseries				
25.	Isoglobotri	Gal α 3Gal β 4Glc β 1Cer	(+)	Dog intestine
26.	Isoglobotetra	GalNAc β 3Gal α 3Gal β 4Glc β 1Cer	(+)	Rat intestine
27.	Gal α 3-isoglobotri	Gal α 3Gal α 3Gal β 4Glc β 1Cer	(+)	Cat intestine
28.	Globotri	Gal α 4Gal β 4Glc β 1Cer	-	Human erythrocytes
29.	Globotetra	GalNAc β 3Gal α 4Gal β 4Glc β 1Cer	-	Human erythrocytes

^a Binding is defined as follows: + denotes a highly reproducible binding of *A. baumannii* CCUG 890 when 4 μ g of the glycosphingolipid was applied on the thin-layer chromatogram, while (+) denotes an occasional binding, and - denotes no binding at 4 μ g. ^b In the shorthand nomenclature for fatty acids and bases, the number before the colon refers to the carbon chain length and the number after the colon gives the total number of double bonds in the molecule. Fatty acids with a 2-hydroxy group are denoted by the prefix h before the abbreviation, e.g., h16:0. For long chain bases, d denotes dihydroxy and t trihydroxy. Thus, d18:1 designates sphingosine (1,3-dihydroxy-2-amino-octadecene) and t18:0. phytosphingosine (1,3,4-trihydroxy-2-amino-octadecene).

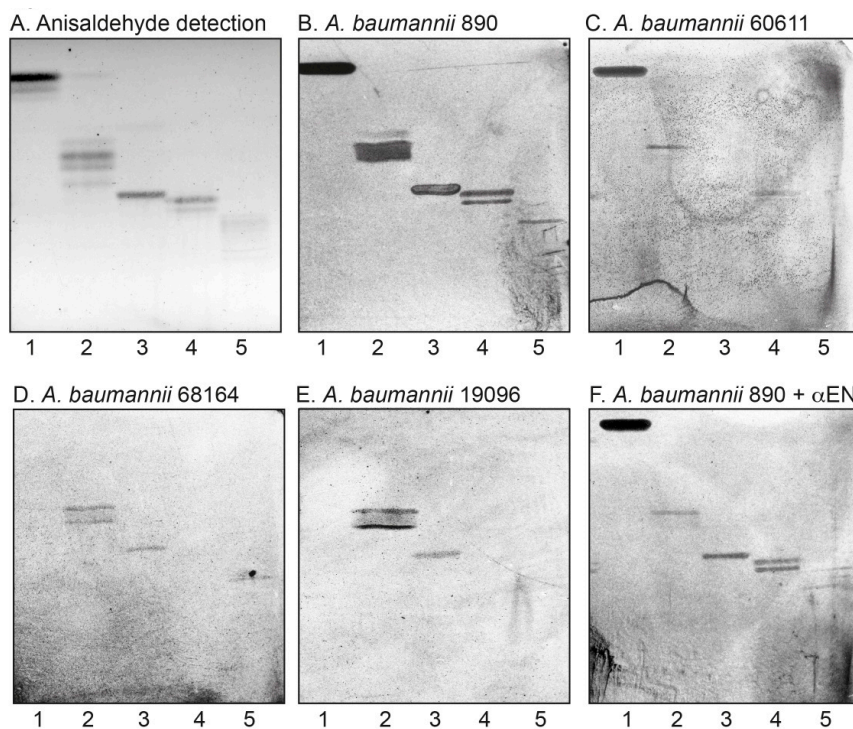


Figure 5. Binding of *A. baumannii* to glycosphingolipids on thin-layer chromatograms. Chemical detection by anisaldehyde (A) and autoradiograms obtained by binding of *A. baumannii* strain CCUG 890 (B), *A. baumannii* strain CCUG 60611 (C), *A. baumannii* strain CCUG 68164 (D), *A. baumannii* strain CCUG 19096 (E), and *A. baumannii* strain CCUG 890 incubated with antibodies raised against the N-terminal domain of CsuE (α EN) (F), followed by autoradiography for 12 h, as described under “Materials and Methods”. The solvent system used was chloroform/methanol/water (60:35:8, by volume). The lanes were: Lane 1, galactosylceramide (Gal β 1Cer), 4 μ g; Lane 2, lactosylceramide (Gal β 4Glc β 1Cer) with hydroxy ceramide, 4 μ g; Lane 3, gangliotriaosylceramide (GalNAc β 4Gal β 4Glc β 1Cer); Lane 4, lactotetraosylceramide (Gal β 3GlcNAc β 3-Gal β 4Glc β 1Cer), 2 μ g; Lane 5, neolactotetraosylceramide (Gal β 4GlcNAc β 3Gal β 4Glc β 1Cer), 2 μ g.

When the relative affinity of *A. baumannii* for the binding-active glycosphingolipids was estimated by binding to serial dilutions of glycosphingolipids on thin-layer chromatograms the bacteria bound to gangliotriaosylceramide, neolactotetraosylceramide, and lactotetraosylceramide with a detection limit of 1–2 μ g, while for galactosylceramide 4 μ g was required for binding to occur. Thus, there was no clear preferential binding to any of these glycosphingolipids.

It should be noted that the binding patterns obtained with the four *A. baumannii* strains differed to some extent (exemplified in Figure 5 and summarized in Table 2). Lactosylceramide and gangliotriaosylceramide were recognized by all four strains, while only the 890 and 60611 strains bound to galactosylceramide. The most interesting difference was found for lactotetraosylceramide and neolactotetraosylceramide. Here, the 890 strain bound consistently to both compounds, the 60611 strain bound only to lactotetraosylceramide, the 68164 strain bound only to neolactotetraosylceramide, while the 19096 strain did not recognize any of these two glycosphingolipids.

Table 2. Comparison of glycosphingolipid binding of *Acinetobacter baumannii* strains.

No.	Trivial name	Structure	CCUG 19096	CCUG 890	CCUG 60611	CCUG 68614
1.	GalCer (d18:1-h24:0) ^b	Gal β 1Cer	– ^a	+	+	–
2.	LacCer (t18:0-h16:0-h24:0)	Gal β 4Glc β 1Cer	+	+	+	+
3.	Gangliotri	GalNAc β 4Gal β 4Glc β 1Cer	+	+	+	+
4.	Neolactotetra	Gal β 4GlcNAc β 3Gal β 4Glc β 1Cer	–	+	–	+
5.	Lactotetra	Gal β 3GlcNAc β 3Gal β 4Glc β 1Cer	–	+	+	–

^a Binding is defined as follows: + denotes a highly reproducible binding of *A. baumannii* when 4 μ g of the glycosphingolipid was applied on the thin-layer chromatogram, while – denotes no binding at 4 μ g. ^b In the shorthand nomenclature for fatty acids and bases, the number before the colon refers to the carbon chain length and the number after the colon gives the total number of double bonds in the molecule. Fatty acids with a 2-hydroxy group are denoted by the prefix h before the abbreviation, e.g., h16:0. For long chain bases, d denotes dihydroxy and t trihydroxy. Thus d18:1 designates sphingosine (1,3-dihydroxy-2-aminooctadecene) and t18:0 phytosphingosine (1,3,4-trihydroxy-2-aminooctadecene).

3.6. Isolation and Characterization of an *A. baumannii* Binding Glycosphingolipid from Human Skin

In order to approach target cell *A. baumannii* binding glycosphingolipids, we next isolated glycosphingolipids from human skin. The major glycosphingolipids of normal human skin were characterized during the 1980s as glucosylceramide, lactosylceramide, globotriaosylceramide, globoside, and the gangliosides GM3 and GD3 [24]. However, a characterization with the methods available today has not been done. Here we isolated a total non-acid fraction from human skin and separated this into five subfractions, which were denoted fractions S-1–S-5 (Figure 6A, lanes 1–5).

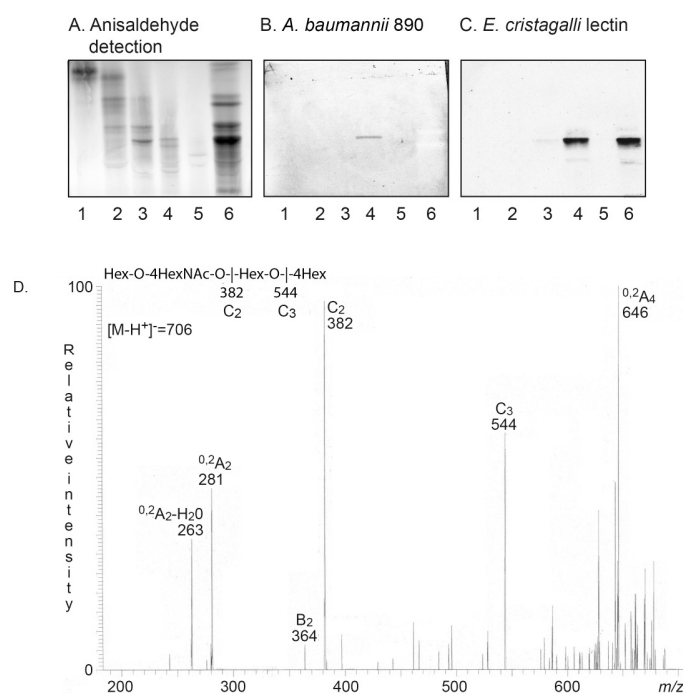


Figure 6. Non-acid glycosphingolipids of human skin: Characterization of neolactotetraosylceramide. (A) Chemical detection by anisaldehyde. (B) Autoradiogram obtained by binding of *A. baumannii* strain CCUG 890. (C) Autoradiogram obtained by binding of Gal β 4GlcNAc-recognizing lectin from *Erythrina crista-galli*. The lanes were: Lanes 1–5, fractions S-1–S-5 isolated from human skin, 4 μ g/lane; Lane 6, reference non-acid glycosphingolipids of human erythrocytes blood group AB, 40 μ g. (D) MS² spectrum of the ion at m/z 706 (retention time 21.0 min) from LC-ESI/MS of the oligosaccharides derived from fraction S-4 from human skin by digestion with *Rhodococcus* endoglycoceramidase II. The interpretation formula shows the deduced oligosaccharide sequence.

Binding of *A. baumannii* to the five non-acid glycosphingolipid subfractions gave a distinct binding in the tetraosylceramide region of fraction S-4 (Figure 6B, lane 4). Chromatogram binding assays with the Gal β 4GlcNAc-recognizing lectin from *E. crista-galli* [21] also gave a binding in the tetraosylceramide region of fraction S-4 (Figure 6C, lane 4), indicating the presence of neolactotetraosylceramide.

LC-ESI/MS of the oligosaccharides obtained from fraction S-4 by hydrolysis with endoglycoceramidase II gave a base chromatogram with molecular ion at m/z 706, demonstrating an oligosaccharide with one HexNAc and three Hex. A C-type fragment ion series (C_2 at m/z 382 and C_3 at m/z 544) identifying a Hex-HexNAc-Hex-Hex sequence was obtained by MS² of the ion at m/z 706 (Figure 6D). Moreover, this spectrum had the characteristic $^{0,2}A_2$ -H₂O fragment ion at m/z 263 and the $^{0,2}A_3$ fragment ion at m/z 281, demonstrating a terminal Hex-HexNAc sequence with a 4-substitution of the HexNAc, i.e., a type 2 chain [17,22,23]. Thus, a neolacto tetrasaccharide (Gal β 4GlcNAc β 3Gal β 4Glc) was again identified.

3.7. Inhibition Studies

Preincubation of *A. baumannii* CCUG 890 with polyclonal antibodies against the N-terminal domain of CsuE (α EN) [5] did not affect the glycosphingolipid binding, i.e., binding to galactosylceramide, lactosylceramide, gangliotriaosylceramide, gangliotetraosylceramide, lactotetraosylceramide, and neolactotetraosylceramide was still obtained (exemplified in Figure 5F). Thus, the hydrophobic three-finger loops at the tip of the Csu pilus are not involved in *A. baumannii* glycosphingolipid binding.

4. Discussion

To establish infections, pathogenic bacteria need to adhere to host cells and tissues, and the majority of microbial attachment sites identified are glycoconjugates [13,14]. In the present study, the carbohydrate recognition by *A. baumannii* bacterial cells was characterized by binding of *A. baumannii* bacteria to glycosphingolipids on thin-layer chromatograms. Two *A. baumannii* binding glycosphingolipids of human and rabbit small intestine were isolated and characterized by mass spectrometry as neolactotetraosylceramide (Gal β 4GlcNAc β 3Gal β 4Glc β 1Cer) and lactotetraosylceramide (Gal β 3GlcNAc β 3Gal β 4Glc β 1Cer), respectively. Since *A. baumannii* also bound to reference lactotriaosylceramide (GlcNAc β 3Gal β 4Glc β 1Cer), the basic binding element recognized is GlcNAc. Glycosphingolipids from human skin were isolated and *A. baumannii* binding neolactotetraosylceramide was characterized in this target tissue for the bacteria. In addition, as previously described for several other bacteria [14]. *A. baumannii* bound to galactosylceramide, lactosylceramide with phytosphingosine and/or hydroxy fatty acids, isoglobotriaosylceramide, gangliotriaosylceramide, and gangliotetraosylceramide. However, while the binding of *A. baumannii* to lactotriaosylceramide, neolactotetraosylceramide, and lactotetraosylceramide was very reproducible, binding to these compounds was only occasionally obtained. The detection limit for binding of *A. baumannii* to galactosylceramide gangliotriaosylceramide, neolactotetraosylceramide, and lactotetraosylceramide, estimated by binding to serial dilutions of glycosphingolipids on thin-layer chromatograms, was at the microgram level (1–4 μ g). Thus, there was no clear preference for any of these glycosphingolipids.

Interestingly, the binding patterns obtained with the four *A. baumannii* strains were not entirely identical. All four strains bound to lactosylceramide and gangliotriaosylceramide, but only the 890 and 60611 strains bound to galactosylceramide. Furthermore, while the 890 strain bound consistently to both lactotetraosylceramide and neolactotetraosylceramide, the 60611 strain bound only to lactotetraosylceramide, the 68164 strain bound only to neolactotetraosylceramide, and the 19096 strain did not recognize either these glycosphingolipids. This indicates that the adhesins of the *A. baumannii* strains have differences in the architecture of their carbohydrate binding site(s).

The potential carbohydrate binding of *A. baumannii* CsuC–CsuE protein [5] was also tested during the initial binding experiments, but no glycosphingolipid binding was observed. Furthermore,

the binding of *A. baumannii* to glycosphingolipids was not affected by preincubation with antibodies against the pilus tip protein CsuE. These antibodies, on the other hand, completely blocked *A. baumannii* biofilm formation [5]. Thus, the hydrophobic three-finger loops at the tip of the Csu pilus are essential for the formation of biofilms but are not involved in *A. baumannii* glycosphingolipid binding.

The ability of *A. baumannii* isolates to adhere to human epithelial cells has been investigated in cell culture experiments, and several proteins, e.g., the outer membrane protein A (OmpA) and the biofilm-associated protein (BAP), have been shown to play a role in the interaction of bacteria with human cells (reviewed in ref. [25]). Despite the multitude of candidate adhesins, no cellular ligands of these proteins have been characterized to date. Further studies of *A. baumannii* potential adhesins, including the adhesin(s) mediating glycosphingolipid binding, are thus needed.

Interestingly, there is a predicted *A. baumannii* protein termed lecA, which is described as a galactose binding protein the UniProt database (entry A0A1G5LY11). *A. baumannii* lecA has very high homology to the lecA (PA-IL) lectin of *Pseudomonas aeruginosa*, which preferentially binds to glycoconjugates with terminal Gal α 4Gal sequences and to some extent also to terminal Gal α 3Gal sequences [26]. Apart from isoglobotriaosylceramide, we did not observe binding of *A. baumannii* to any glycosphingolipids with terminal Gal α 4Gal and Gal α 3Gal sequences (e.g., globotriaosylceramide (no. 28 in Table 1) <https://susy.mdpi.com/user/manuscripts/resubmit/0b5776af599a41dc5d4837e5ff40be13>) or B penta (no. 12). However, in *P. aeruginosa* the lecA lectin is located mainly in the cytoplasm with only a small fraction on the cytoplasmic membrane [27]. If this is also the case with *A. baumannii* lecA, it might explain the absence of binding of the bacterial cells. Obviously the role of this putative lectin needs further investigations.

Binding of G fimbria of human uropathogenic *Escherichia coli*, and fimbriae belonging to the F17 family of bovine enterotoxigenic and invasive *E. coli* strains, to terminal GlcNAc has been reported, and the lectin domains of the G and F17 fimbriae have been co-crystallized with *N*-acetylglucosamine [28,29]. However, the target cell receptors for these fimbriae have not yet been identified.

The identification of the *A. baumannii* binding glycosphingolipids, lactotetraosylceramide, and neolactotetraosylceramide may further contribute to our understanding of the molecular mechanisms by which *A. baumannii* establish successful infection in human hosts and could hopefully guide the development of novel high-affinity ligands that may be used as anti-adhesive compounds against *A. baumannii* infections.

Author Contributions: Conceptualization, K.S., A.Z., and S.T.; funding acquisition, S.T.; investigation, M.M.J., M.A., B.H., and H.M.; resources, A.Z. and S.T.; supervision, A.Z. and S.T.; visualization, M.M.J.; writing—original draft, S.T.; writing—review and editing, M.M.J., M.A., B.H., K.S., H.M., and A.Z. All authors have read and agreed to the published version of the manuscript.

Funding: This study was supported by the Swedish Cancer Foundation and by governmental grants to the Sahlgrenska University Hospital.

Conflicts of Interest: There is no conflict of interest claimed by the authors. The funders had no role in the design of the study; in the collection, analyses, or interpretation of data; in the writing of the manuscript; or in the decision to publish the results.

References

1. World Health Organization, WHO Publishes List of Bacteria for Which New Antibiotics Are Urgently Needed. 2017. Available online: <http://www.who.int/mediacentre/news/releases/2017/bacteria-antibiotics-needed/en/> (accessed on 27 February 2017).
2. Espinal, P.; Martí, S.; Vila, J. Effect of biofilm formation on the survival of *Acinetobacter baumannii* on dry surfaces. *J. Hospital. Infect.* **2012**, *80*, 56–60. [CrossRef] [PubMed]
3. Tomaras, A.P.; Dorsey, C.W.; Edelman, R.E.; Actis, L.A. Attachment to and biofilm formation on abiotic surfaces by *Acinetobacter baumannii*: Involvement of a novel chaperone-usher pili assembly system. *Microbiology* **2003**, *149*, 3473–3484. [CrossRef] [PubMed]

4. de Breij, A.; Gaddy, J.; van der Meer, J.; Koning, R.; Koster, A.; van den Broek, P.; Actis, L.; Nibbering, P.; Dijkshoorn, L. CsuA/BABCDE-dependent pili are not involved in the adherence of *Acinetobacter baumannii* ATCC19606^T to human airway epithelial cells and their inflammatory response. *Res. Microbiol.* **2009**, *160*, 213–218. [[CrossRef](#)] [[PubMed](#)]
5. Pakharukova, N.; Tuittila, M.; Paavilainen, S.; Parilova, O.; Malmi, H.; Teneberg, S.; Knight, S.; Zavalov, A.V. Structural basis for *Acinetobacter baumannii* biofilm formation. *Proc. Natl. Acad. Sci. USA* **2018**, *115*, 5558–5563. [[CrossRef](#)]
6. Gaddy, J.A.; Tomaras, A.P.; Actis, L.A. The *Acinetobacter baumannii* 19606 OmpA protein plays a role in biofilm formation on abiotic surfaces and in the interaction of this pathogen with eukaryotic cells. *Infect. Immun.* **2009**, *77*, 3150–3160. [[CrossRef](#)]
7. Brossard, K.A.; Campagnari, A.A. The *Acinetobacter baumannii* biofilm-associated protein plays a role in adherence to human epithelial cells. *Infect. Immun.* **2012**, *80*, 228–233. [[CrossRef](#)]
8. De Gregorio, E.; Del Franco, M.; Martinucci, M.; Roschetto, E.; Zarrilli, R.; Di Nocera, P.P. Biofilm-associated proteins: News from *Acinetobacter*. *BMC Genom.* **2015**, *16*, 933. [[CrossRef](#)]
9. Álvarez-Fraga, L.; Pérez, A.; Rumbo-Feal, S.; Merino, M.; Vallejo, J.A.; Ohneck, E.J.; Edelmann, R.E.; Beceiro, A.; Vázquez-Ucha, J.C.; Valle, J.; et al. Analysis of the role of the LH92_11085 gene of a biofilm hyperproducing *Acinetobacter baumannii* strain on biofilm formation and attachment to eukaryotic cells. *Virulence* **2016**, *7*, 443–455. [[CrossRef](#)]
10. Weidensdorfer, M.; Ishikawa, M.; Hori, K.; Linke, D.; Djahanschiri, B.; Iruegas, R.; Ebersberger, I.; Riedel-Christ, S.; Enders, G.; Leukert, L.; et al. The *Acinetobacter* trimeric autotransporter adhesin Ata controls key virulence traits of *Acinetobacter baumannii*. *Virulence* **2019**, *10*, 68–81. [[CrossRef](#)]
11. Lee, J.C.; Koerten, H.; van den Broek, P.; Beekhuizen, H.; Wolterbeek, R.; van den Barselaar, M.; van der Reijden, T.; van der Meer, J.; van de Gevel, J.; Dijkshoorn, L. Adherence of *Acinetobacter baumannii* strains to human bronchial epithelial cells. *Res. Microbiol.* **2006**, *157*, 360–366. [[CrossRef](#)]
12. Giannouli, M.; Antunes, L.C.; Marchetti, V.; Triassi, M.; Visca, P.; Zarrilli, R. Virulence-related traits of epidemic *Acinetobacter baumannii* strains belonging to the international clonal lineages I-III and to the emerging genotypes ST25 and ST78. *BMC Infect. Dis.* **2013**, *13*, 282. [[CrossRef](#)] [[PubMed](#)]
13. Pieters, R.J. Carbohydrate mediated bacterial adhesion. *Adv. Exp. Med. Biol.* **2011**, *715*, 227–240. [[PubMed](#)]
14. Karlsson, K.A. Animal glycosphingolipids as membrane attachment sites for bacteria. *Annu. Rev. Biochem.* **1989**, *58*, 309–350. [[CrossRef](#)] [[PubMed](#)]
15. Karlsson, K.A. Preparation of total non-acid glycolipids for overlay analysis of receptors for bacteria and viruses and for other studies. *Meth. Enzymol.* **1987**, *138*, 212–220.
16. Samuelsson, B.E.; Pimlott, W.; Karlsson, K.A. Mass spectrometry of mixtures of intact glycosphingolipids. *Meth. Enzymol.* **1990**, *193*, 623–646.
17. Karlsson, H.; Halim, A.; Teneberg, S. Differentiation of glycosphingolipid-derived glycan structural isomers by liquid chromatography-mass spectrometry. *Glycobiology* **2010**, *20*, 1103–1116. [[CrossRef](#)]
18. Koerner, T.A.W., Jr.; Prestegard, J.H.; Demou, P.C.; Yu, R.K. High-resolution proton NMR studies of gangliosides. 1. Use of homonuclear spin-echo J-correlated spectroscopy for determination of residue composition and anomeric configurations. *Biochemistry* **1983**, *22*, 2676–2687. [[CrossRef](#)]
19. Waldi, D. Sprühreagentien für die dünnschicht-chromatographie. In *Dünnschicht-Chromatographie*; Stahl, E., Ed.; Springer: Berlin, Germany, 1962; pp. 496–515.
20. Roche, N.; Ångström, J.; Hurtig, M.; Larsson, T.; Borén, T.; Teneberg, S. *Helicobacter pylori* and complex gangliosides. *Infect. Immun.* **2004**, *72*, 1519–1529. [[CrossRef](#)]
21. Teneberg, S.; Jovall, P.Å.; Ångström, J.; Karlsson, K.A. Characterization of binding of Gal β 4GlcNAc-specific lectins from *Erythrina christagalli* and *Erythrina corallodendron* to glycosphingolipids. Detection, isolation and characterization of a novel glycosphingolipid of bovine buttermilk. *J. Biol. Chem.* **1994**, *269*, 8554–8563.
22. Chai, W.; Piskarev, V.; Lawson, A.M. Negative ion electrospray mass spectrometry of neutral underivatized oligosaccharides. *Anal. Chem.* **2001**, *73*, 651–657. [[CrossRef](#)]
23. Robbe, C.; Capon, C.; Coddeville, B.; Michalski, J.C. Diagnostic ions for the rapid analysis by nano-electrospray ionization quadrupole time-of-flight mass spectrometry of O-glycans from human mucins. *Rapid Commun. Mass Spectrom.* **2004**, *18*, 412–420. [[CrossRef](#)] [[PubMed](#)]
24. Hamanaka, S.; Asagami, C.; Nishioka, K.; Fujita, H. The glycolipids of normal human skin. *J. Dermatol.* **1983**, *10*, 545–549. [[CrossRef](#)] [[PubMed](#)]

25. McConnell, M.J.; Actis, L.; Pachón, J. *Acinetobacter baumannii*: Human infections, factors contributing to pathogenesis and animal models. *FEMS Microbiol. Rev.* **2013**, *37*, 130–155. [[CrossRef](#)] [[PubMed](#)]
26. Blanchard, B.; Nurisso, A.; Hollville, E.; Tétaud, C.; Wiels, J.; Pokorná, M.; Wimmerová, M.; Varrot, A.; Imberty, A. Structural basis of the preferential binding for globo-series glycosphingolipids displayed by *Pseudomonas aeruginosa* lectin I. *J. Mol. Biol.* **2008**, *383*, 837–853. [[CrossRef](#)] [[PubMed](#)]
27. Glick, J.; Garber, N. The intracellular localization of *Pseudomonas aeruginosa* lectins. *J. Gen. Microbiol.* **1983**, *129*, 3085–3090. [[CrossRef](#)]
28. Merckel, M.C.; Tanskanen, J.; Edelman, S.; Westerlund-Wikström, B.; Korhonen, T.K.; Goldman, A. The structural basis of receptor binding by *Escherichia coli* associated with diarrhea and septicemia. *J. Mol. Biol.* **2003**, *331*, 897–905. [[CrossRef](#)]
29. Buts, L.; Bouckaert, J.; De Genst, E.; Loris, R.; Oscarson, S.; Lahmann, M.; Messens, J.; Brosens, E.; Wyns, L.; De Greve, H. The fimbrial adhesin F17-G of enterotoxigenic *Escherichia coli* has an immunoglobulin-like lectin domain that binds *N*-acetylglucosamine. *Mol. Microbiol.* **2003**, *49*, 705–715. [[CrossRef](#)]



© 2020 by the authors. Licensee MDPI, Basel, Switzerland. This article is an open access article distributed under the terms and conditions of the Creative Commons Attribution (CC BY) license (<http://creativecommons.org/licenses/by/4.0/>).