

Establishing an effective dose for chronic intracerebroventricular administration of clozapine in mice

Dilhan Esen-Sehir^{1,2}, Michael J. Courtney³, Robert A. Bittner¹, Andreas Reif¹, Florian Freudenberg¹

¹Department of Psychiatry, Psychosomatic Medicine and Psychotherapy, University Hospital, Goethe University Frankfurt, Germany

²The Faculty of Biological Sciences, Goethe University Frankfurt, Germany

³Neuronal Signalling Laboratory, Turku Centre for Biotechnology, University of Turku, Finland

Running title: Chronic intracerebroventricular clozapine in mice

Corresponding author:

Florian Freudenberg, Laboratory of Translational Psychiatry, Department of Psychiatry, Psychosomatic Medicine and Psychotherapy, University Hospital, Goethe University Frankfurt, Heinrich-Hoffmann-Straße 10, 60528 Frankfurt, Germany, Email:

Florian.Freudenberg@kgu.de, Phone: +49 69 6301-85665, Fax: +49 69 6301-84481

Abstract

Objective: Despite its numerous side-effects clozapine is still the most effective antipsychotic making it an ideal reference substance to validate the efficacy of novel compounds for the treatment of schizophrenia. However, blood-brain barrier permeability for most new molecular entities is unknown, requiring central delivery. Thus, we performed a dose-finding study for chronic intracerebroventricular (icv) delivery of clozapine in mice. *Methods:* Specifically, we implanted wildtype C57BL/6J mice with osmotic minipumps (Alzet) delivering clozapine at a rate of 0.15 μ l/h at different concentrations (0, 3.5, 7 and 14 mg/ml, i.e. 0, 12.5, 25, 50 μ g/day). Mice were tested weekly in a modified SHIRPA paradigm, for locomotor activity in the open field and for prepulse inhibition (PPI) of the acoustic startle response (ASR) for a period of three weeks. *Results:* None of the clozapine concentrations caused neurological deficits or evident gross behavioural alterations in the SHIRPA paradigm. In male mice, clozapine had no significant effect on locomotor activity or PPI of the ASR. In female mice the 7 and 14 mg/ml dose of clozapine significantly affected both open field activity and PPI, while 3.5 mg/ml of clozapine increased PPI but had no effects on locomotor activity. *Conclusion:* Our findings indicate that 7 mg/ml may be the optimal dose for chronic icv delivery of clozapine in mice, allowing comparison to screen for novel antipsychotic compounds.

Keywords: stereotaxic techniques, antipsychotics, locomotor activity, sensory gating

Significant outcomes

- Chronic central delivery of clozapine does not lead to gross neurological or behavioural deficits in mice.
- In male mice chronic icv delivery of clozapine did not significantly affect locomotor activity or PPI.
- Chronic clozapine treatment increases open field activity and PPI in female mice within one week after onset of treatment.

Limitations

- We only tested for two behavioural domains – PPI and locomotor activity. A wider range of rodent behaviours could be used to model various aspects of schizophrenia.
- Experiments were only performed in wildtype mice. Thus, results should be validated in mouse models of schizophrenia.

Introduction

Schizophrenia is a complex psychiatric disorder characterized by impairments in perception, affect and cognition (1). The majority of currently approved pharmacological agents for the treatment of schizophrenia mainly target the dopaminergic and serotonergic systems (2). Although these drugs are quite effective in treating positive symptoms (i.e. psychotic symptoms), negative symptoms (such as lethargy, apathy, and social withdrawal) and cognitive deficits remain largely unaffected (3,4). Three independent studies, CATIE, CUtLASS, and EUFEST (5–7), indicate a limited benefit of currently available antipsychotics: overall, the first and second generation antipsychotics offer comparable efficacy, except for clozapine, which is associated with higher efficacy in treatment-resistant patients (6,8), but also with more serious side effects including agranulocytosis and myocarditis (9). However, all drugs were associated with high rates of discontinuation due to side effects or dissatisfaction with their benefits. One possible reason is that current antipsychotics have similar mechanisms of action, e.g. D2/5-HT2A receptor antagonism with minor effects at other receptors. Drug development for schizophrenia has not progressed appreciably by focusing solely on psychosis (4). However, there is an urgent need for drugs that ameliorate cognitive impairments and negative symptoms, increase treatment adherence and provide improved options for treatment-resistant patients with less side effects (10). Thus, targeting other systems and/or protein interactions closely involved in the pathophysiology of schizophrenia, particularly the glutamatergic system, may provide a more direct approach for the treatment of this disorder (11). The glutamatergic synapse is a target-rich environment containing a large number of pre-, postsynaptic and regulatory proteins that could function as targets for drug development (12), e.g. metabotropic glutamate receptors (13), the NMDA receptor (14), as well as nNOS, NOS1AP and PSD-95 (15). However, large-scale screening of new molecular entities for the treatment of central nervous system (CNS) diseases is impeded by the blood brain barrier (BBB), which can be circumvented by central delivery.

As a matter of course, validation of new therapeutic agents for schizophrenia requires comparison to established antipsychotic treatment, preferably to clozapine due to its unique clinical efficacy. Clozapine is superior to all other antipsychotics in its effects on positive and negative symptoms as well as suicidality (8,16–18). Notably, there is both *in vitro* and *in vivo* evidence suggesting a possible glutamatergic mechanism of action of clozapine (19).

Clozapine has shown efficacy in rodent models of schizophrenia (20,21). At the behavioural level systemic clozapine treatment improves sensory gating in humans and mice (22,23). Sensory gating deficits have been identified as a fundamental cognitive impairment in patients with schizophrenia (24). Modelling positive symptoms of schizophrenia in mice includes investigations of psychomotor agitation, particularly locomotor activity. In this context, clozapine has been shown to alter open field activity in rodents (20,25,26).

Abrams and colleagues (20) have already investigated the effects of chronic intracerebroventricular (icv) delivery of clozapine in rats. However, to date, there is no established dosage for chronic icv delivery in mice. Here, we conducted the first dose-finding study for chronic icv clozapine administration in mice to pave the way for further preclinical studies comparing the effects of novel potential therapeutics for schizophrenia to centrally administered clozapine. We used changes in sensory gating and open field activity as our primary markers for adequate icv dosing of clozapine.

Methods

Mice

Adult male and female C57BL/6JRj mice (11 weeks old; Janvier Labs, France) were used for this study. All mice were held under standard laboratory conditions ($21\pm 1^\circ\text{C}$ temperature, $55\pm 5\%$ humidity, 12 h light/dark cycle with lights on at 07:00 h) and housed in groups of four with access to food and water *ad libitum*. The experiments were performed in accordance with the German animal welfare laws (TierSchG and TSchV) and were approved by local authorities (Regierungspräsidium Darmstadt, approval ID FK/1101).

Drugs

Clozapine was dissolved as described in Abrams et al. (20). In brief, 2-hydroxypropyl-beta-cyclodextrin (HPBCD) was used to solubilize clozapine first under acidic conditions (pH

~2.0 with HCl) and titrated back toward neutral pH with NaOH. All formulations were in a HPBCD:clozapine molar ratio of 4:1 and filter sterilized prior to icv administration.

The clozapine doses used for this study were based on the known effective dose in rats (100 $\mu\text{g}/\text{day}$) (20). The average mouse brain volume is about one quarter of that of a rat brain (27). Thus, a dose of approximately 25 $\mu\text{g}/\text{day}$ would be effective assuming direct translatability from rats to mice. However, since differences in metabolism, receptor density etc. can affect the actual effective dose, clozapine was tested in three different doses ranging around this value (i.e. 12.5, 25, 50 $\mu\text{g}/\text{day}$). The concentrations used to achieve the desired doses at a delivery rate of 0.15 $\mu\text{l}/\text{h}$ were 3.5, 7 and 14 mg/ml in 240 mg/ml HPBCD. The vehicle used here was 240 mg/ml HPBCD in 1x phosphate buffered saline (PBS).

Mice (6-7 mice/group/sex) were randomly assigned to the four treatment groups (i.e. 12.5, 25, 50 μg clozapine/day or vehicle [i.e. HPBCD]). Clozapine (or vehicle) was delivered centrally using osmotic minipumps (Alzet Model 2006, Cupertino, CA, USA).

Stereotaxic surgeries

Stereotaxic surgeries were performed under isoflurane anaesthesia (1-2%). For local analgesia ropivacaine (2 mg/ml; 100-200 μl) was injected subcutaneously and metamizole (2 mg/ml) was given to the drinking water preoperatively for 2 days and postoperatively for 3 days. The uptake of metamizole was ensured by monitoring water intake daily. Mice were placed in a stereotaxic apparatus (Stoelting Co). The osmotic minipumps were prepared and implanted as described by Sanchez-Mendoza and colleagues (28). The cannulae (Alzet Brain Infusion Kit 3, 30 G) were implanted into the right or left lateral ventricles (counterbalanced across mice) with stereotaxic coordinates relative to bregma (29): AP -0.5 mm, ML \pm 1.4 mm and DV 3 mm from the skull surface. The cannulae were fixed to the skull with cyanoacrylate adhesive (Loctite 454). The osmotic pump was placed in a subcutaneous pocket at the back of the mouse and connected to the cannula via a vinyl catheter (0.71 mm outer diameter). After surgery the incision was sutured, and stability was supported with N-Butyl cyanoacrylate wound adhesive (Surgibond). The mice were allowed to recover from surgery for 7 days.

Behavioural testing

One week before and weekly until week three after surgery a battery of three different behavioural tests was performed. Tests were carried out between 10:00 am and 06:00 pm.

The SHIRPA screen (adapted from IMPReSS; Doc. Number: ESLIM_008_001 from 26 June 2008) comprises a battery of 20 individual tests, organized in five functional categories: motor behaviour, reflex and sensory, neuropsychiatric, autonomous function, and muscle tone of each mouse. This screen has been modified and specifically evaluates body weight, body position, tremor, palpebral closure, lacrimation, urination and defecation that were observed in a viewing jar (14 cm diameter; 18 cm height) for 5 min; transfer arousal, locomotor activity, gait, pelvic elevation, tail elevation, startle response and touch escape that were observed in an open field for 10 min; positional passivity, limb grasping, trunk curl, pinna reflex, corneal reflex, contact righting reflex. Throughout this screening, any occurrence of abnormal behaviour, fear, aggression or vocalisation was recorded.

Open field test. Locomotor activity was evaluated as part of the SHIRPA screen during a 10-min trial in an open field arena (Stoelting Co, 40 cm x 40 cm) with transparent acrylic walls (H: 35 cm). The ANY-maze™ video tracking system (Stoelting Co) equipped with a digital camera (The Imaging Source Europe GmbH, Bremen, Germany) was used to record the total distance travelled, number of photobeam array activations and time spent in the centre of the arena (20 cm x 20 cm) for the total time of 10 min.

Prepulse inhibition (PPI) of the acoustic startle response (ASR) was measured with the SR-Lab™ startle response system (San Diego Instruments, Inc., USA). This startle setup consists of a light- and sound isolated box with an acrylic cylinder mounted on a piezoelectric element to detect mouse movement. Mice were placed into the cylinder and after 5 min acclimation to background noise of 65 dB (continued throughout the test session), six acoustic startle pulses (120 dB broadband noise for 40 ms) were presented with an inter-trial interval (ITI) of 10 s. Thereafter, a total of 70 trials were presented in a randomized sequence and with variable ITI of (20 s - 30 s): 10 x no stimulus (only background noise was presented), 10 x startle pulse only, 10 x each prepulse (4, 8, 12, 16 dB above background = 69, 73, 77, 81 dB) for 20 ms followed by a 40 ms startle pulse after an interpulse interval of 100 ms (onset to onset), 10 x prepulse only (16 dB above background) for 20 ms. The session was terminated with six startle pulses only with an ITI of 10 s. Each session lasted around 35 min. The magnitudes of ASR to pulse only trials were averaged for each mouse and defined as startle amplitude. PPI percentage was calculated as described by Geyer and Swerdlow (30)) using the following formula:

$$\%PPI = 100 \times \frac{\text{startle amplitude}_{\text{startle trials}} - \text{startle amplitude}_{\text{prepulse +startle trials}}}{\text{startle amplitude}_{\text{startle trials}}}$$

Perfusion of mice

Six weeks after implantation, mice were deeply anaesthetized with 5-6% isoflurane and transcardially perfused with ~6 ml 1x PBS solution followed by ~30 ml 4% formaldehyde (FA) in 1x PBS with a perfusion speed of 3 ml/min. Brains were then removed, postfixed in 4% FA in 1x PBS for 2 h, and cryoprotected in 30% sucrose in 1x PBS for 48 h and then frozen in -20°C. Additionally, liver and kidneys were extracted, frozen in -20°C and later examined for organic changes by assessing their weight.

Brains were sectioned at 50 µm using a cryostat (Leica CM3050 S cryostat, Leica Biosystems) and stained with Hematoxylin-Eosin (Morphisto GmbH, Frankfurt) according to the manufacturer's instruction. Brain slices were mounted in Histofluid (Paul Marienfeld) and imaged at 2.5x/0.085 magnification on a Zeiss Axio Observer.Z1. equipped with a Zeiss Axiocam 305 color to confirm cannula placement.

Statistical analysis

JASP (v0.10) was used to perform statistical analyses. Since sex-specific differences were observed (e.g. open field activity, startle reaction, PPI; see supplementary material), males and females were analysed separately. Behavioural assessments, including the SHIRPA scores, bodyweights, locomotor activity, and startle and PPI data were examined statistically for significance using the Mann-Whitney U test for comparing female and male mice, and the Friedman Test or Kruskal-Wallis Test, followed by Conover's or Dunn's post hoc test (when appropriate) with Bonferroni correction against respective controls for within or between subject comparison. Data are reported as mean ± s.e. Statistical significance was defined at P<0.05.

Results

***In vivo* behavioural studies in mice**

Mice were implanted with an icv catheter attached to an osmotic pump to deliver either clozapine in different concentrations (3.5, 7, or 14 mg/ml) or vehicle (i.e. HPBCD). Of the 52 mice used for this study, three died during surgery (mortality 5.8%). Mice with detached cannulae from the skull were excluded from further behavioural studies (n=1 excluded from

post 1 measurement; further n=4 from post 2; further n=6 from post 3). Mice with incorrect implantation were excluded from analysis (4 of 49 mice \approx 8.2%). The implantation was considered a success when the cannula reached the necessary depth to enter the ventricular system (Figure 1a). Tissue damage from injection was restricted to brain tissue directly above the lateral ventricles, including parts of the primary motor cortex, primary somatosensory cortex and the corpus callosum.

All mice increased their body weight throughout the experimental period (female: $X^2(3)=39.15$, $p<0.001$; male: $X^2(3)=21.02$, $p<0.001$) whereby males were significantly heavier than female mice (pre: $U=0$, $p<0.001$; post 1: $U=2$, $p<0.001$; post 2: $U=15.5$, $p<0.001$; pre: $U=0$, $p<0.001$;) with a significantly lower liver-to-body ratio ($U=72$, $p=0.02$) and a significantly higher kidney-to-body weight ratio ($U=19$ $p=0.041$). However, clozapine treatment had no effect on total body weight (female: $H(3)\leq 5.49$, $p\geq 0.139$; male: $H(3)\leq 3.231$, $p\geq 0.357$), liver-to-body-weight ratio (female: $H(3)=0.778$; $p=0.855$, male: $H(3)=0.164$, $p=0.983$), or kidney-to-body-weight ratio (female: $H(3)=0.778$; $p=0.855$; male: $H(3)=0.155$, $p=0.985$) throughout all measurement time points in both sexes.

SHIRPA

SHIRPA score was used to investigate whether icv delivery of clozapine causes behavioural and physiological impairments in mice (Figure 1b, Table S1). The SHIRPA score revealed differences in the functional categories “neuromuscular function” and “spinocerebellar function” between groups, in female mice (Figure 1b). One week of clozapine treatment showed an effect on spinocerebellar function in females ($H(3)=9.429$, $p=0.024$), whereby mice receiving 7 mg/ml clozapine displayed an altered body position and reared significantly less compared to vehicle-treated mice ($p=0.012$). Two weeks after surgery female mice displayed differences in their neuromuscular function depending on the clozapine concentration they received ($H(3)=8.762$ $p=0.033$). Female mice receiving 7 mg/ml clozapine displayed a modest, but significantly reduced spontaneous activity compared to mice receiving vehicle ($p=0.03$). The other parameters measured were not different among the treatment conditions ($p>0.05$). Male mice did not display differences in any behavioural measurement depending on the clozapine concentration ($p>0.05$, data not shown).

Open field

Mice with chronic icv administration of clozapine (3.5, 7 or 14 mg/ml) were tested in the open field (Figure 2, Table S2) to assess effects of clozapine treatment on locomotor and behavioural activity levels, which can be correlated with locomotive function (31).

Already one week after clozapine administration some differences in the open field activity of female mice were observable between treatment groups (Figure 2). While horizontal activity, specifically the total distance travelled was marginally affected ($H(3) \leq 7.01$, $p \geq 0.072$), vertical activity (number of photobeam array activation; i.e. number of rearings) was borderline significant (post 1: $H(3) = 7.718$, $p = 0.052$; all other time points: $H(3) \leq 4.167$, $p \geq 0.244$). Female mice treated with 7 or 14 mg/ml clozapine showed a significant decrease in vertical activity by up 50% at post 1 compared to vehicle treated mice ($p = 0.018$ and 0.042 respectively). Mice treated with 14 mg/ml showed a significant ~20% reduction in locomotor activity ($p = 0.033$) at post 1. The time spent in the centre of the arena was significantly affected at post 3 ($H(3) = 10.48$, $p = 0.015$). However, there were no significant differences compared to control mice ($P > 0.7$). Centre time remained unaffected by clozapine treatment for all other time points ($H(3) \leq 3.659$, $p \geq 0.301$). In male mice no differences could be observed between the treatment groups ($H(3) \leq 4.33$, $p \geq 0.228$).

Prepulse inhibition

Deficient PPI of ASR is a common endophenotype in schizophrenia and has been associated with impaired sensorimotor gating. PPI is considered to be a useful psychophysiological process for pharmacological screening (32,33).

The startle response was statistically comparable between all treatment groups (pre: $H(3) \leq 4.913$; $p \geq 0.178$). To assess startle habituation, pulse-alone trials at the beginning and end of the session were compared, revealing significant within-session habituation (pre: $W = 887$, $p < 0.001$; post 1: $W = 954$, $p < 0.001$; post 2: $W = 882$, $p < 0.001$; post 3: $W = 111$, $p < 0.001$). Within session habituation was not significantly affected by clozapine treatment ($P > 0.05$).

Female mice showed a trend of reduced startle response to a 120 dB stimulus (pre: $U = 179$, $p = 0.099$) and a significantly reduced PPI ($p < 0.01$) compared to male mice (Table S3). This difference in ASR could be accounted for by body weight in males and females which has a stronger impact on the responses by the piezoelectric element. Of note, there was a significant positive correlation found between PPI and ASR in females ($r_T = 0.371$, $p = 0.019$, $n = 21$), but a marginally significant negative correlation in males ($r_T = -0.239$, $p = 0.107$, $n = 24$).

As expected, the amount of PPI increased with increasing prepulse intensity ($X^2(3)=84.44$, $p<0.001$). This difference reached statistical significance in each of the experiments ($p<0.01$).

Again, due to sex differences in the startle response and PPI level males and females were analysed independently. Repeated measures analysis with the inner subject factor time (pre, post 1, post 2, post 3) revealed an effect of time for all prepulse intensities in female mice ($X^2(3)\geq 22.45$; $p<0.001$) but only for some prepulse intensities in male mice (4 dB: $X^2(3)=5.211$, $p=0.157$; 8 dB: $X^2(3)=11.533$, $p=0.009$; 12 dB: $X^2(3)=19.74$, $p<0.001$; 16 dB: $X^2(3)=2.558$, $p=0.465$). Similarly, the startle response to a 120 dB startle pulse also increased in female mice after surgery ($X^2(3)=16.14$, $p=0.001$), but not in males ($X^2(3)=5.968$, $P=0.113$).

Due to PPI differences between groups already prevalent before treatment onset, treatment groups were analysed independently to evaluate whether PPI is significantly altered by clozapine administration. PPI levels at the lowest prepulse intensity (i.e. 4 dB above background) were sufficient for detecting PPI-enhancing effects of clozapine (7 mg/ml: $X^2(3)=12.05$; $p=0.007$) being evident one week after treatment onset ($p=0.018$) but not in the second ($p=0.069$) and third week ($p=0.132$) in female mice (Figure 3). PPI with prepulse intensity at 8 dB above background yielded clozapine effects at all dosages (3.5 mg/ml : $X^2(3)=12.6$, $p=0.006$; 7 mg/ml: $X^2(3)=8.4$, $p=0.038$; 14 mg/ml: $X^2(3)=9.24$, $p=0.026$) though only the 3.5 mg/ml dose showed a significant effect at post 1 after correction for multiple testing. However, using the highest prepulse intensities (12 dB and 16 dB above background) PPI was significantly affected by all clozapine concentrations in female mice compared to vehicle-treated (12 dB – 3.5 mg/ml: $X^2(3)=11.6$, $p=0.009$; 7 mg/ml: $X^2(3)=11.6$, $p=0.009$; 14 mg/ml: $X^2(3)=13.56$, $P=0.004$; 16 dB – 3.5 mg/ml: $X^2(3)=11.4$, $p=0.01$; 7 mg/ml: $X^2(3)=13.2$, $p=0.004$; 14 mg/ml: $X^2(3)=12.12$, $P=0.007$). In male mice only the 7 mg/ml dose had an effect on PPI with prepulse intensities at 8 dB above background ($X^2(3)=11.1$, $p=0.011$) with post hoc testing showing a strong trend for increased PPI at post 1 ($p=0.054$), but otherwise no significant clozapine effects on PPI could be observed in male mice, independent of the presented prepulse intensity ($X^2(3)<7.5$, $p>0.05$; Figure 4).

Discussion

Identification of new targets at the glutamatergic post synapse may be a promising therapeutic strategy for treatment of schizophrenia (34). However, the movement of large molecules

between the blood, CSF, and interstitial fluid of the brain is restricted by the limited permeability of the BBB (35). In some cases, newly developed compounds may already cross the BBB or they may be chemically modified to improve their penetration into the brain (36). In other cases, where penetration is poor or unknown, methodologies for direct administration into the brain allows evaluation of the potential therapeutic value of novel molecules. Positive results would provide the motivation to invest in the required medicinal chemistry for designing derivatives with improved pharmacokinetic and pharmacodynamic properties and compatible with peripheral routes of administration. Infusion into the ventricle will result in distribution throughout the whole ventricular system and the external CSF spaces like the basal cisterns and over the convexity (37). In order to compare new compounds with an already known control substance, we administered clozapine chronically into the lateral cerebral ventricle of C57BL/6J male and female mice to determine the optimal dose.

The literature presents conflicting data regarding the effects of clozapine on open field activity. Abrams et al. (20) have shown that rats with chronic icv administration of clozapine (17 mg/ml) displayed significant increase in the distance travelled in the outer square of the open field maze. In contrast, Gururajan et al. (25) have observed that a single intraperitoneal administration of clozapine (3 mg/kg) inhibits MK-801-induced hyperactivity in Sprague–Dawley rats. In a previous study the same group noted that a moderate dose of clozapine (3 mg/kg) decreased locomotor activity whereas a higher dose (10 mg/kg) had no effect on locomotor activity (38). Gray et al. (26) found that chronic intraperitoneal administration of clozapine (5 mg/kg) for 8 weeks did not alter the distance travelled by WT C57/B16 background mice but ameliorated the hyperactivity in mGluR5 knockout mice.

In the present study, central administration of clozapine did not affect locomotor activity in the open field or gross behaviour in the modified SHIRPA test, at least in male mice. Female mice receiving 7 mg/ml clozapine differed in their body position (rearing less) and displayed a reduced spontaneous activity compared to mice receiving vehicle. These findings are in line with a study showing that clozapine blocked the increase in rearing time and rearings elicited by methylphenidate administration in a dose-dependent fashion (39).

Studies regarding the anxiolytic effect of clozapine have also been mixed. In the present study, clozapine had no significant effects on the time spent in the centre of the arena which can be associated with anxiety levels (40,41). Other findings point towards an increased anxiety-related behaviour and decreased exploratory activity in rats (42). However, several other studies have suggested an anxiolytic property of clozapine in the open field test (43), as well as in conditioned fear paradigms (44).

Methodological differences might account for the discrepant reports related to the ability of clozapine to alter open field activity. Most previous studies have investigated the effects of an acute administration of clozapine on PPI or behaviour via a subcutaneous or intraperitoneal route using a concentration range of 1-12 $\mu\text{g/g}$, mostly 30 min prior to testing. Our study investigated chronic central administration with a daily dose of 12.5, 25 and 50 μg for 3 weeks. In case of a single injection, plasma concentration rises to a peak but then declines rapidly until the test compound is eliminated, which happens more rapidly in rats and mice than in humans (45). Hence the effects of a compound following a single injection is limited to few hours whereas continuous drug administration using implantable infusion pumps ensures that test compounds are present in plasma and tissues for a defined duration to allow their biological effects to develop fully, with better reproducibility (46). Consequently, effects of chronic central clozapine on behaviour can be considered as more reliable.

Sensorimotor gating, as tested by the PPI of the ASR, has a high translational value across species (47) and is often used for pharmacological screening of antipsychotics or novel compounds involving new targets. Several different studies have already shown that antipsychotics can reverse PPI deficits (Table 1). Gray et al. (26) showed that chronic intraperitoneal clozapine treatment (5 mg/kg) for 5 weeks significantly increases PPI in mGluR5 KO mice compared to saline treated KO mice. However, they could not observe an overall effect of clozapine in wildtype mice. Feifel et al. (48) showed that a single systemic clozapine injection (7.5 mg/kg) facilitated PPI in Brown Norway rats which exhibit natural PPI deficits under certain parametric conditions. In humans a single clozapine administration increased PPI levels in healthy subjects with low but not high PPI performance in a manner comparable to that seen in clozapine-treated schizophrenia patients (22). In the present study, mice treated with 12.5, 25, 50 μg clozapine per day showed an increase in PPI one week after onset of treatment compared to the control whereby the highest concentration showed no effects at the lower prepulse intensities. Thus, a dosage range between 3.5 and 7 mg/ml can be used in future studies requiring chronic icv delivery of clozapine.

Usually, pharmacological studies of PPI are based primarily on the ability of a drug (e.g. dopamine D_2 receptor antagonist) to reverse a drug-induced deficit in PPI produced by psychotomimetic drugs such as amphetamine (indirect sympathomimetic) and phencyclidine (NMDA receptor antagonist) (49). However, in the current study we administered clozapine only to wildtype mice which were not pre-treated to induce schizophrenia-like conditions. Still, our results seem to be in line with studies showing that intraperitoneal administration of clozapine (1-12 mg/kg) attenuates PPI deficits, for instance, in phospholipase C- β 1 KO mice

(50) or even completely reverses PPI-disruptive effects of apomorphine (D_1 receptor agonist; (33,51)). Duncan and colleagues (21) showed that systemic application of clozapine (3 mg/kg) increased PPI in both the wild type and a mutant mouse model of chronic NMDA receptor hypofunction (i.e. *Grin1*^{-/-} mice) and concluded that the assessment of behaviour of this mutant mouse model in the PPI paradigm offers no advantage over the wild type controls for identifying new clozapine-like drugs. Hence, finding the effective dose for chronic central clozapine administration in wildtype mice can be considered as a valid method.

The administered clozapine dose was the same in female and male mice. However, females seemed to be more sensitive to clozapine treatment displaying behavioural alterations. Anderson et al. (53) showed that women tend to attain 17 % higher plasma clozapine concentrations than men, although the prescribed clozapine concentration was not different. They concluded that the higher body mass index and blood glucose in women might relate to higher tissue exposure of clozapine due to sex differences in drug metabolism. This might explain the sex differences observed in our study.

Strikingly, we found that female mice showed a trend for lower startle response and significantly lower PPI than male mice which is in contrast to PPI measurement in humans where the difference is limited to PPI and not ASR. Gogos and colleagues (54) have shown that male patients with bipolar disorder (BD) have a reduced PPI compared to female BD participants and therefore concluded that studies should consider men and women with BD as two distinct groups, at least in PPI studies. However, in rodents it is important to consider that the differences in male-female body weights differently impact the piezoelectric accelerometer, whereas in the human paradigm weight is largely irrelevant as startle amplitude is measured by electromyographic recordings of the orbicularis oculi. The first demonstration of a sex difference in rodent sensorimotor gating was provided by Lehmann and colleagues (55) showing that the ASR and PPI of the ASR are both greater in male than in female Wistar rats, being in line with these findings. Furthermore, testing PPI in females (human and rodents) requires to bear in mind that the PPI is affected by the oestrous cycle: PPI is typically reduced during the period of ovarian cycle when oestrogen levels are highest (56,57). Mice were tested weekly for 3 weeks and because their oestrous cycle lasts approximately 4-5 days (58), it is plausible we covered all four phases. However, since the variance between males and females was relatively comparable, changes in the oestrous cycle appeared to have no major effect on the PPI in our study.

One factor potentially limiting a clear interpretation of our results was the administration of only two behavioural tests – PPI and open field. We chose these paradigms

as it was shown in several studies that they are affected by clozapine treatment (20,21,25,26,38,39,42,43,48,50,51) as well as due to their high test-retest reliability (59,60), an important requirement, due to the repeated test sessions applied in this study. A wide range of rodent behaviours are currently used to model various aspects of schizophrenia which evaluate traits such as sensory-motor function, social interactions, anxiety-like and depressive-like behaviour, substance dependence and various forms of cognitive function (24). Thus, in future studies, efficacy of chronic icv delivery of clozapine will need to be assessed in these models. Furthermore, in the present study we only used wild type mice, which do not reflect a disease-like state. Thus, future studies using animal models of schizophrenia (e.g. using maternal immune activation (61)) will provide a better predictive validity of current or future therapies.

Patients with schizophrenia often suffer from non-psychotic symptoms; especially depressive syndromes are found commonly, be it parallel to psychotic episodes or in the form of post-psychotic depression (62). These patients require anti-depressant treatments (63,64), and it has been shown that concomitant medication with anti-depressants reduce the risk for hospitalization and emergency room visits (65). Therefore, another factor that could increase the translational value of our approach in future studies, would be the co-application of antidepressants with clozapine or other drugs with antipsychotic potential.

Interestingly, there is preliminary evidence that the clozapine metabolite N-desmethylclozapine (NDMC or norclozapine) – while showing no antipsychotic efficacy – contributes to the precognitive effects of clozapine after long-term treatment, specifically improving working memory (66). Therefore, our model might also be used to further elucidate the complex actions of clozapine and its metabolite.

In summary, none of the clozapine concentrations tested caused neurological deficits or evident behavioural alterations in mice. Only the 7 mg/ml dose of clozapine significantly affected both behaviour in the open field and SHIRPA test, as well as PPI, while 3.5 and 14 mg/ml of clozapine increased PPI but showed no effects on SHIRPA score and minor effects on locomotor activity (only 14 mg/ml). Thus, the 7 mg/ml dosage can be used in future studies requiring chronic icv delivery of clozapine in mice.

Author contributions:

FF, MJC, and AR conceived and designed the study. FF planned the experiments and supervised the work. AR and RAB advised on clinical aspects. DES and FF carried out the stereotaxic surgeries. DES performed the behavioural experiments, the staining of brains and validation of correct implantation. DES, FF, and RAB analysed and interpreted the data. DES and FF wrote the manuscript with input from all authors. All authors approved the final version of the manuscript.

Financial support:

This study has been supported in part by the DFG (FR3420/2–1 and 2-2 to FF), the DAAD with funds from the Federal Ministry of Education and Research (IDs 57348387 and 57458932 to FF) and the Avicenna-Studienwerk with funds from the Federal Ministry of Education and Research (to DES). The funding agencies had no further role in study design; in the collection, analysis and interpretation of data, in the writing of the report, and in the decision to submit the paper for publication.

Statement of interest:

None.

Ethical standards:

The authors assert that all procedures contributing to this work comply with the ethical standards of the relevant national and institutional guides on the care and use of laboratory animals.

Figure legends

Figure 1 (a) Exemplary image of correct implantation of the cannula to the lateral ventricle (LV). Coordinates relative to bregma: AP -0.5 mm, ML \pm 1.4 mm. Slices of 50 μ m thickness were HE stained to validate proper targeting. Right hand panel: comparison to respective coronal and sagittal slices (AP -0.58) from Paxinos and Franklin's the Mouse Brain in Stereotaxic Coordinates (2001) (29). (b) Comparison of total SHIRPA scores (mean \pm SE) of female mice (n=21) before and after chronic icv administration of clozapine. The SHIRPA tests were divided into five categories (Rogers et al., 1997). Total scores were shown as the sum of the scores for all and each of the categories and are not scaled to vehicle-treatment levels. Analysis of variance (ANOVA) was performed with clozapine concentration as the grouping variable and post hoc comparisons were carried out using the Tukey HSD test. Asterisks indicate significant intergroup differences for clozapine concentration compared to control (i.e. 0 mg/ml): (*) $P \leq 0.05$. Abbreviations: M1 = primary motor cortex, M2 = secondary motor cortex, S1 = primary somatosensory cortex

Figure 2 Behavioural measurements (mean \pm SE) recorded in the open field arena of female (n = 21) and male (n= 24) mice before and after chronic icv administration of clozapine for three weeks. Analysis of variance (ANOVA) was performed with clozapine concentration as the grouping variable and post hoc comparisons were carried out using the Tukey HSD test. Asterisks indicate significant intergroup differences for clozapine concentration compared to control (i.e. 0 mg/ml): (*) $P \leq 0.05$.

Figure 3 Prepulse inhibition (PPI) in female mice. Means \pm SEM of the means of the percentage of PPI following different prepulse intensities (4, 8, 12, 16 dB above background of 65 dB) in female C57BL/6J mice (n=21) at different time points prior and after surgery treated with different concentrations of clozapine (3.5 mg/ml, 7 mg/ml, 14 mg/ml) and vehicle only. Asterisks indicate significant differences between pre to post measurements: (*) $p \leq 0.05$. Significant trends (i.e. p-values < 0.1) for post compared to pre measurements are indicated.

Figure 4 Prepulse inhibition (PPI) in male mice. Means \pm SEM of the means of the percentage of PPI following different prepulse intensities (4, 8, 12, 16 dB above background of 65 dB) in male C57BL/6J mice (n=24) at different time points prior and after surgery treated with different concentrations of clozapine (3.5 mg/ml, 7 mg/ml, 14 mg/ml) and vehicle only. No significant clozapine effects on time could be observed. Significant trends (i.e. p-values < 0.1) for post compared to pre measurements are indicated.

References

1. Andreasen NC. Schizophrenia: The fundamental questions. *Brain Res Rev*. 2000 Mar;31(2–3):106–12.
2. Mauri MC, Paletta S, Maffini M, Colasanti A, Dragogna F, Di Pace C, et al. Clinical pharmacology of atypical antipsychotics: an update. *EXCLI J* [Internet]. 2014 [cited 2019 Feb 18];13:1163–91. Available from: <http://www.ncbi.nlm.nih.gov/pubmed/26417330>
3. Horacek J, Bubenikova-Valesova V, Kopecek M, Palenicek T, Dockery C, Mohr P, et al. Mechanism of action of atypical antipsychotic drugs and the neurobiology of schizophrenia. *CNS Drugs* [Internet]. 2006 Jan;20(5):389–409. Available from: <http://www.ncbi.nlm.nih.gov/pubmed/16696579>
4. Carpenter WT, Koenig JI. The evolution of drug development in schizophrenia: Past issues and future opportunities [Internet]. Vol. 33, *Neuropsychopharmacology*. NIH Public Access; 2008 [cited 2018 Oct 22]. p. 2061–79. Available from: <http://www.ncbi.nlm.nih.gov/pubmed/18046305>
5. Lieberman JA, Stroup TS, McEvoy JP, Swartz MS, Rosenheck RA, Perkins DO, et al. Effectiveness of Antipsychotic Drugs in Patients with Chronic Schizophrenia. *N Engl J Med* [Internet]. 2005 Sep 22 [cited 2019 May 5];353(12):1209–23. Available from: <http://www.ncbi.nlm.nih.gov/pubmed/16172203>
6. Lewis SW, Barnes TRE, Davies L, Murray RM, Dunn G, Hayhurst KP, et al. Randomized Controlled Trial of Effect of Prescription of Clozapine Versus Other Second-Generation Antipsychotic Drugs in Resistant Schizophrenia. *Schizophr Bull* [Internet]. 2005 Oct 12 [cited 2019 Jan 30];32(4):715–23. Available from: <http://www.ncbi.nlm.nih.gov/pubmed/16540702>
7. Kahn RS, Fleischhacker WW, Boter H, Davidson M, Vergouwe Y, Keet IP, et al. Effectiveness of antipsychotic drugs in first-episode schizophrenia and schizophreniform disorder: an open randomised clinical trial. *Lancet* [Internet]. 2008 Mar 29 [cited 2019 May 5];371(9618):1085–97. Available from: <http://www.ncbi.nlm.nih.gov/pubmed/18374841>
8. McEvoy J, Lieberman JA, Stroup TS, Davis SM, Meltzer HY, Rosenheck RA, et al. Effectiveness of Clozapine Versus Olanzapine, Quetiapine, and Risperidone in Patients With Chronic Schizophrenia Who Did Not Respond to Prior Atypical Antipsychotic Treatment. *Am J Psychiatry* [Internet]. 2006 Apr 1 [cited 2019 Jan 30];163(4):600. Available from: <http://www.ncbi.nlm.nih.gov/pubmed/16585434>
9. Kane J, Honigfeld G, Singer J, Meltzer H. Clozapine for the treatment-resistant schizophrenic. A double-blind comparison with chlorpromazine. *Arch Gen Psychiatry* [Internet]. 1988 Sep [cited 2019 Feb 17];45(9):789–96. Available from: <http://www.ncbi.nlm.nih.gov/pubmed/3046553>
10. Fellner C. New Schizophrenia Treatments Address Unmet Clinical Needs. *P T* [Internet]. 2017 Feb [cited 2019 May 6];42(2):130–4. Available from: <http://www.ncbi.nlm.nih.gov/pubmed/28163559>
11. Insel TR, Scolnick EM. Cure therapeutics and strategic prevention: raising the bar for mental health research. *Mol Psychiatry* [Internet]. 2006 Jan 15 [cited 2019 Jan 30];11(1):11–7. Available from: <http://www.ncbi.nlm.nih.gov/pubmed/16355250>
12. Moghaddam B, Javitt D. From Revolution to Evolution: The Glutamate Hypothesis of Schizophrenia and its Implication for Treatment. *Neuropsychopharmacology* [Internet]. 2012 Jan 28 [cited 2019 Jan 30];37(1):4–15. Available from: <http://www.ncbi.nlm.nih.gov/pubmed/21956446>
13. Yasuhara A, Chaki S. Metabotropic glutamate receptors: potential drug targets for psychiatric disorders. *Open Med Chem J* [Internet]. 2010 May 27 [cited 2018 Nov 2];4:20–36. Available from: <http://www.ncbi.nlm.nih.gov/pubmed/21160908>
14. Hashimoto K. Targeting of NMDA receptors in new treatments for schizophrenia. *Expert Opin Ther Targets* [Internet]. 2014 Sep 26 [cited 2018 Nov 2];18(9):1049–63. Available from: <http://www.ncbi.nlm.nih.gov/pubmed/24965576>
15. Freudenberg F, Althoff A, Reif A. Neuronal nitric oxide synthase (NOS1) and its adaptor, NOS1AP, as a genetic risk factors for psychiatric disorders. *Genes, Brain Behav*. 2015;14(1):46–63.
16. Raja M. Clozapine safety, 35 years later. *Curr Drug Saf* [Internet]. 2011 Jul [cited 2019 Jan 30];6(3):164–84. Available from: <http://www.ncbi.nlm.nih.gov/pubmed/22122392>
17. Brambilla P, Barale F, Caverzasi E, Tognoni G, Barbui C. Clozapine-treated subjects with treatment-resistant schizophrenia: a systematic review of experimental and observational studies. *Int Clin Psychopharmacol* [Internet]. 2002 Jul [cited 2019 Jan 30];17(4):189–95. Available from:

<http://www.ncbi.nlm.nih.gov/pubmed/12131603>

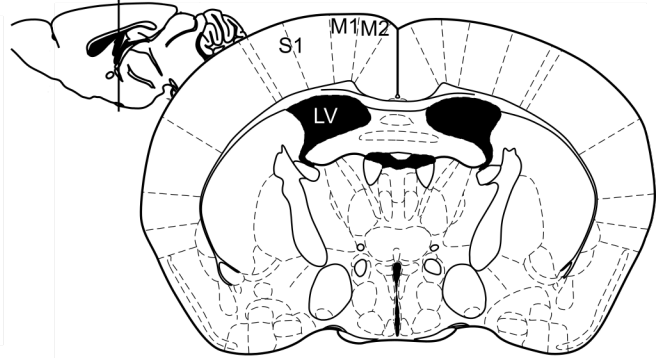
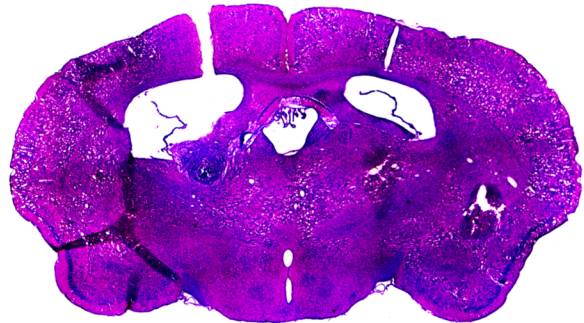
18. Krause M, Huhn M, Schneider-Thoma J, Bighelli I, Gutmiedl K, Leucht S. Efficacy, acceptability and tolerability of antipsychotics in patients with schizophrenia and comorbid substance use. A systematic review and meta-analysis. *Eur Neuropsychopharmacol*. 2019;29(1):32–45.
19. Tanahashi S, Yamamura S, Nakagawa M, Motomura E, Okada M. Clozapine, but not haloperidol, enhances glial d-serine and L-glutamate release in rat frontal cortex and primary cultured astrocytes. *Br J Pharmacol* [Internet]. 2012 Mar [cited 2019 May 5];165(5):1543–55. Available from: <http://www.ncbi.nlm.nih.gov/pubmed/21880034>
20. Abrams DJ, Zheng L, Choo KS, Yang JJ, Wei W, Anchordoquy TJ, et al. An initial animal proof-of-concept study for central administration of clozapine to schizophrenia patients. *Schizophr Res*. 2008;100(1–3):86–96.
21. Duncan GE, Moy SS, Lieberman JA, Koller BH. Effects of haloperidol, clozapine, and quetiapine on sensorimotor gating in a genetic model of reduced NMDA receptor function. *Psychopharmacology (Berl)* [Internet]. 2006 Feb 16 [cited 2019 Jan 30];184(2):190–200. Available from: <http://www.ncbi.nlm.nih.gov/pubmed/16362405>
22. Vollenweider FX, Barro M, Csomor PA, Feldon J. Clozapine Enhances Prepulse Inhibition in Healthy Humans with Low But Not with High Prepulse Inhibition Levels. *Biol Psychiatry* [Internet]. 2006 Sep 15 [cited 2019 Jan 30];60(6):597–603. Available from: <http://www.ncbi.nlm.nih.gov/pubmed/16997001>
23. Simosky JK, Stevens KE, Adler LE, Freedman R. Clozapine improves deficient inhibitory auditory processing in DBA/2 mice, via a nicotinic cholinergic mechanism. *Psychopharmacology (Berl)* [Internet]. 2003 Feb [cited 2019 May 6];165(4):386–96. Available from: <http://link.springer.com/10.1007/s00213-002-1285-x>
24. Powell CM, Miyakawa T. Schizophrenia-Relevant Behavioral Testing in Rodent Models: A Uniquely Human Disorder? *Biol Psychiatry* [Internet]. 2006 Jun 15 [cited 2019 Jan 30];59(12):1198–207. Available from: <http://www.ncbi.nlm.nih.gov/pubmed/16797265>
25. Gururajan A, Taylor DA, Malone DT. Cannabidiol and clozapine reverse MK-801-induced deficits in social interaction and hyperactivity in Sprague–Dawley rats. *J Psychopharmacol* [Internet]. 2012 Oct 9 [cited 2019 Jan 30];26(10):1317–32. Available from: <http://www.ncbi.nlm.nih.gov/pubmed/22495620>
26. Gray L, van den Buuse M, Scarr E, Dean B, Hannan AJ. Clozapine reverses schizophrenia-related behaviours in the metabotropic glutamate receptor 5 knockout mouse: association with N-methyl-d-aspartic acid receptor up-regulation. *Int J Neuropsychopharmacol* [Internet]. 2009 Feb 2 [cited 2019 Jan 30];12(01):45. Available from: <http://www.ncbi.nlm.nih.gov/pubmed/18593507>
27. Bishop KM, Wahlsten D. Sex and species differences in mouse and rat forebrain commissures depend on the method of adjusting for brain size. *Brain Res* [Internet]. 1999 Jan 9 [cited 2019 Jan 31];815(2):358–66. Available from: <http://www.ncbi.nlm.nih.gov/pubmed/9878827>
28. Sanchez-Mendoza EH, Carballo J, Longart M, Hermann DM, Doeppner TR. Implantation of Miniosmotic Pumps and Delivery of Tract Tracers to Study Brain Reorganization in Pathophysiological Conditions. *J Vis Exp* [Internet]. 2016 [cited 2019 Feb 17];107:52932. Available from: www.jove.com/url:https://www.jove.com/video/52932
29. Paxinos G, Franklin KBJ. *Mouse brain in stereotaxic coordinates*. Academic Press. 2001.
30. Geyer MA, Swerdlow NR. Measurement of Startle Response, Prepulse Inhibition, and Habituation. *Curr Protoc Neurosci* [Internet]. 2001 May 1 [cited 2019 Mar 13];3(1):8.7.1-8.7.15. Available from: <http://doi.wiley.com/10.1002/0471142301.ns0807s03>
31. Tatem KS, Quinn JL, Phadke A, Yu Q, Gordish-Dressman H, Nagaraju K. Behavioral and Locomotor Measurements Using an Open Field Activity Monitoring System for Skeletal Muscle Diseases. *J Vis Exp* [Internet]. 2014 Sep 29 [cited 2019 Jan 31];(91):51785. Available from: <http://www.ncbi.nlm.nih.gov/pubmed/25286313>
32. Koch M. The neurobiology of startle. *Prog Neurobiol* [Internet]. 1999 Oct [cited 2019 Jan 31];59(2):107–28. Available from: <http://www.ncbi.nlm.nih.gov/pubmed/10463792>
33. Swerdlow NR, Geyer MA. Using an animal model of deficient sensorimotor gating to study the pathophysiology and new treatments of schizophrenia. *Schizophr Bull* [Internet]. 1998 [cited 2019 Mar 13];24(2):285–301. Available from: <http://www.ncbi.nlm.nih.gov/pubmed/9613626>

34. Moghaddam B. Targeting metabotropic glutamate receptors for treatment of the cognitive symptoms of schizophrenia. *Psychopharmacology (Berl)* [Internet]. 2004 Jun 19 [cited 2019 Feb 17];174(1):39–44. Available from: <http://link.springer.com/10.1007/s00213-004-1792-z>
35. Pardridge WM. The blood-brain barrier: bottleneck in brain drug development. *NeuroRx* [Internet]. 2005 Jan [cited 2019 Jan 31];2(1):3–14. Available from: <http://www.ncbi.nlm.nih.gov/pubmed/15717053>
36. He Q, Liu J, Liang J, Liu X, Li W, Liu Z, et al. Towards Improvements for Penetrating the Blood–Brain Barrier—Recent Progress from a Material and Pharmaceutical Perspective. *Cells* [Internet]. 2018 Mar 23 [cited 2019 Apr 23];7(4). Available from: <http://www.ncbi.nlm.nih.gov/pubmed/29570659>
37. Slavic I, Cohen-Pfeffer JL, Gururangan S, Krauser J, Lim DA, Maldaun M, et al. Best practices for the use of intracerebroventricular drug delivery devices. *Mol Genet Metab* [Internet]. 2018 Jul 1 [cited 2019 May 6];124(3):184–8. Available from: <https://www.sciencedirect.com/science/article/pii/S1096719218300192>
38. Gururajan A, Taylor DA, Malone DT. Effect of cannabidiol in a MK-801-rodent model of aspects of Schizophrenia. *Behav Brain Res* [Internet]. 2011 Sep 23 [cited 2019 Jan 31];222(2):299–308. Available from: <http://www.ncbi.nlm.nih.gov/pubmed/21458498>
39. Saldívar-González JA, Campos-Rodríguez UE, Cano-Cruz MA. Differential effect of clozapine and haloperidol on rats treated with methylphenidate in the open field test. *Proc West Pharmacol Soc* [Internet]. 2009 [cited 2019 Jan 31];52:63–6. Available from: <http://www.ncbi.nlm.nih.gov/pubmed/22128426>
40. Bailey KR, Crawley JN. Anxiety-Related Behaviors in Mice [Internet]. *Methods of Behavior Analysis in Neuroscience*. CRC Press/Taylor & Francis; 2009 [cited 2019 Jan 31]. Available from: <http://www.ncbi.nlm.nih.gov/pubmed/21204329>
41. Freudenberg F, O’Leary A, Aguiar DC, Slattery DA. Challenges with modelling anxiety disorders: a possible hindrance for drug discovery. *Expert Opin Drug Discov*. 2018 Apr;13(4):279–81.
42. Mc Fie S, Sterley T-L, Howells FM, Russell VA. Clozapine decreases exploratory activity and increases anxiety-like behaviour in the Wistar–Kyoto rat but not the spontaneously hypertensive rat model of attention-deficit/hyperactivity disorder. *Brain Res* [Internet]. 2012 Jul 27 [cited 2019 Jan 31];1467:91–103. Available from: <http://www.ncbi.nlm.nih.gov/pubmed/22658977>
43. Bruhwyler J, Chleide E, Liégeois JF, Delarge J, Mercier M. Anxiolytic potential of sulpiride, clozapine and derivatives in the open-field test. *Pharmacol Biochem Behav* [Internet]. 1990 May [cited 2019 Jan 31];36(1):57–61. Available from: <http://www.ncbi.nlm.nih.gov/pubmed/2349269>
44. MEAD A, LI M, KAPUR S. Clozapine and olanzapine exhibit an intrinsic anxiolytic property in two conditioned fear paradigms: Contrast with haloperidol and chlordiazepoxide. *Pharmacol Biochem Behav* [Internet]. 2008 Oct [cited 2019 Jan 31];90(4):551–62. Available from: <http://www.ncbi.nlm.nih.gov/pubmed/18547622>
45. Löscher W. The Pharmacokinetics of Antiepileptic Drugs in Rats: Consequences for Maintaining Effective Drug Levels during Prolonged Drug Administration in Rat Models of Epilepsy. *Epilepsia* [Internet]. 2007 Jul [cited 2019 Jan 31];48(7):1245–58. Available from: <http://www.ncbi.nlm.nih.gov/pubmed/17441999>
46. Urquhart J, Fara JW, Willis KL. Rate-Controlled Delivery Systems in Drug and Hormone Research. *Annu Rev Pharmacol Toxicol* [Internet]. 1984;24(1):199–236. Available from: <http://www.annualreviews.org/doi/10.1146/annurev.pa.24.040184.001215>
47. Braff DL, Geyer MA, Swerdlow NR. Human studies of prepulse inhibition of startle: normal subjects, patient groups, and pharmacological studies. *Psychopharmacology (Berl)* [Internet]. 2001 Jul [cited 2019 Jan 31];156(2–3):234–58. Available from: <http://www.ncbi.nlm.nih.gov/pubmed/11549226>
48. Feifel D, Shilling PD, Melendez G. Clozapine and PD149163 elevate prepulse inhibition in Brown Norway rats. *Behav Neurosci* [Internet]. 2011 Apr [cited 2019 Jan 31];125(2):268–72. Available from: <http://www.ncbi.nlm.nih.gov/pubmed/21463026>
49. Powell SB, Zhou X, Geyer MA. Prepulse inhibition and genetic mouse models of schizophrenia. *Behav Brain Res* [Internet]. 2009 Dec 7 [cited 2019 Jan 31];204(2):282–94. Available from: <http://www.ncbi.nlm.nih.gov/pubmed/19397931>
50. McOmish CE, Burrows E, Howard M, Scarr E, Kim D, Shin H-S, et al. Phospholipase C-β1 knockout mice exhibit endophenotypes modeling schizophrenia which are rescued by environmental enrichment and clozapine administration. *Mol Psychiatry* [Internet]. 2008 Jul 31 [cited 2019 May 6];13(7):661–72.

Available from: <http://www.nature.com/articles/4002046>

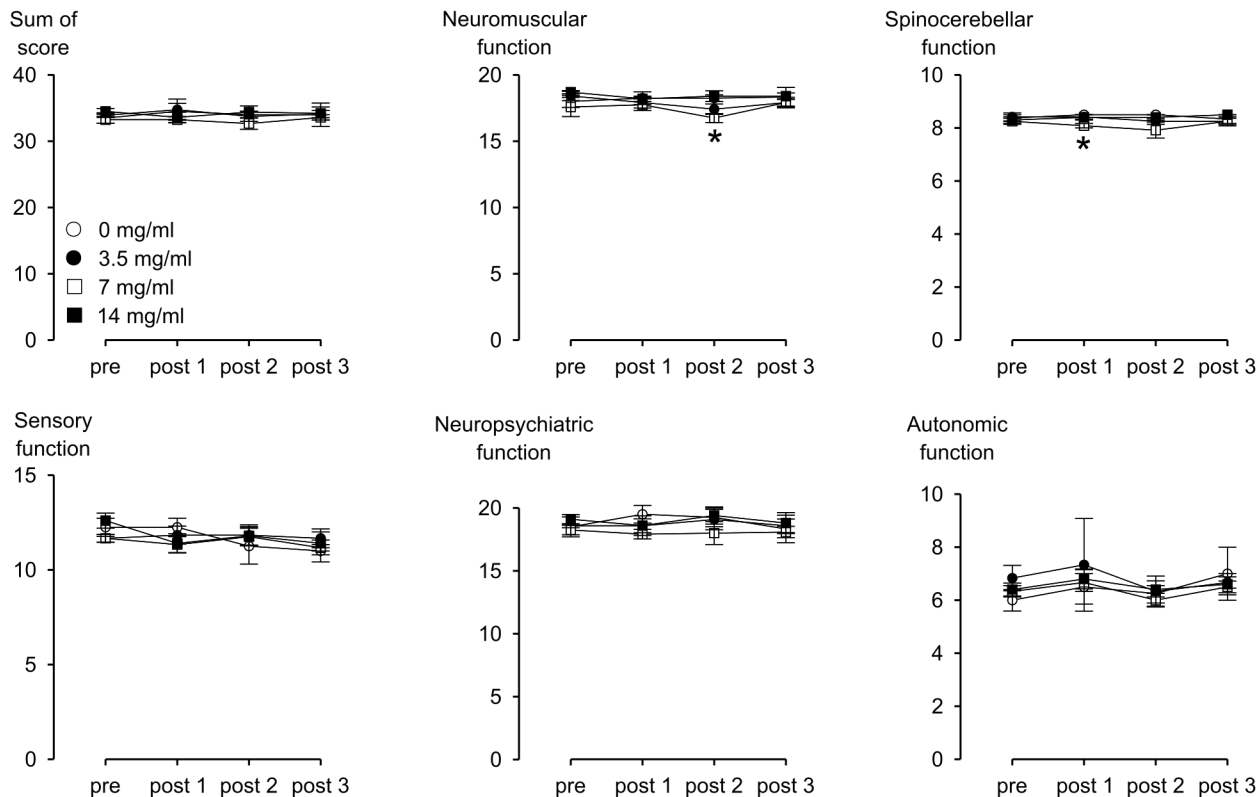
51. Swerdlow, M.D., Ph.D. N, Varty GB, Geyer MA. Discrepant Findings of Clozapine Effects on Prepulse Inhibition of Startle: Is It the Route or the Rat? *Neuropsychopharmacology* [Internet]. 1998 Jan [cited 2019 Mar 13];18(1):50–6. Available from: <http://www.ncbi.nlm.nih.gov/pubmed/9408918>
52. Geyer MA, Swerdlow NR. Measurement of Startle Response, Prepulse Inhibition, and Habituation. *Curr Protoc Neurosci* [Internet]. 1998 May [cited 2019 Jan 31];3(1):8.7.1-8.7.15. Available from: <http://www.ncbi.nlm.nih.gov/pubmed/18428548>
53. Anderson SG, Livingston M, Couchman L, Smith DJ, Connolly M, Miller J, et al. Sex differences in plasma clozapine and norclozapine concentrations in clinical practice and in relation to body mass index and plasma glucose concentrations: a retrospective survey. *Ann Gen Psychiatry* [Internet]. 2015 Dec 14 [cited 2019 Jan 31];14(1):39. Available from: <http://www.annals-general-psychiatry.com/content/14/1/39>
54. Gogos A, van den Buuse M, Rossell S. Gender differences in prepulse inhibition (PPI) in bipolar disorder: men have reduced PPI, women have increased PPI. *Int J Neuropsychopharmacol* [Internet]. 2009 Oct 3 [cited 2019 Jan 31];12(09):1249. Available from: <http://www.ncbi.nlm.nih.gov/pubmed/19490735>
55. Lehmann J, Pryce CR, Feldon J. Sex differences in the acoustic startle response and prepulse inhibition in Wistar rats. *Behav Brain Res* [Internet]. 1999 Oct [cited 2019 Jan 31];104(1–2):113–7. Available from: <http://www.ncbi.nlm.nih.gov/pubmed/11125729>
56. Gogos A, Kwek P, van den Buuse M. The role of estrogen and testosterone in female rats in behavioral models of relevance to schizophrenia. *Psychopharmacology (Berl)* [Internet]. 2012 Jan 29 [cited 2019 Jan 31];219(1):213–24. Available from: <http://www.ncbi.nlm.nih.gov/pubmed/21800043>
57. Páleníček T, Hlíňák Z, Bubeníková-Valešová V, Novák T, Horáček J. Sex differences in the effects of N,N-diethyllysergamide (LSD) on behavioural activity and prepulse inhibition. *Prog Neuro-Psychopharmacology Biol Psychiatry* [Internet]. 2010 May 30 [cited 2019 Jan 31];34(4):588–96. Available from: <http://www.ncbi.nlm.nih.gov/pubmed/20156516>
58. Nelson JF, Felicio LS, Randall PK, Sims C, Finch CE. A longitudinal study of estrous cyclicity in aging C57BL/6J mice: I. Cycle frequency, length and vaginal cytology. *Biol Reprod* [Internet]. 1982 Sep [cited 2019 Jan 31];27(2):327–39. Available from: <http://www.ncbi.nlm.nih.gov/pubmed/6889895>
59. Schwarzkopf SB, McCoy L, Smith DA, Boutros NN. Test-retest reliability of prepulse inhibition of the acoustic startle response. *Biol Psychiatry* [Internet]. 1993 Dec 15 [cited 2019 Jul 1];34(12):896–900. Available from: <http://www.ncbi.nlm.nih.gov/pubmed/8110918>
60. Walsh RN, Cummins RA. The Open-Field Test: a critical review. *Psychol Bull* [Internet]. 1976 May [cited 2019 Jul 1];83(3):482–504. Available from: <http://www.ncbi.nlm.nih.gov/pubmed/17582919>
61. Brown AS, Meyer U. Maternal Immune Activation and Neuropsychiatric Illness: A Translational Research Perspective. *Am J Psychiatry* [Internet]. 2018 Nov 1 [cited 2019 May 6];175(11):1073–83. Available from: <http://www.ncbi.nlm.nih.gov/pubmed/30220221>
62. Buckley PF, Miller BJ, Lehrer DS, Castle DJ. Psychiatric Comorbidities and Schizophrenia. *Schizophr Bull* [Internet]. 2009 Mar 1 [cited 2019 Jul 1];35(2):383–402. Available from: <http://www.ncbi.nlm.nih.gov/pubmed/19011234>
63. Englisch S, Inta D, Eer A, Zink M. Bupropion for Depression in Schizophrenia. *Clin Neuropharmacol* [Internet]. 2010 Sep [cited 2019 Jul 1];33(5):257–9. Available from: <http://www.ncbi.nlm.nih.gov/pubmed/20852411>
64. Taylor D, Ellison Z, Ementon Shaw L, Wickham H, Murray R. Co-administration of citalopram and clozapine: effect on plasma clozapine levels. *Int Clin Psychopharmacol* [Internet]. 1998 Jan [cited 2019 Jul 1];13(1):19–21. Available from: <http://www.ncbi.nlm.nih.gov/pubmed/9988363>
65. Stroup TS, Gerhard T, Crystal S, Huang C, Tan Z, Wall MM, et al. Comparative Effectiveness of Adjunctive Psychotropic Medications in Patients With Schizophrenia. *JAMA Psychiatry* [Internet]. 2019 May 1 [cited 2019 Jul 1];76(5):508. Available from: <http://www.ncbi.nlm.nih.gov/pubmed/30785609>
66. Rajji TK, Mulsant BH, Davies S, Kalache SM, Tsoutsoulas C, Pollock BG, et al. Prediction of Working Memory Performance in Schizophrenia by Plasma Ratio of Clozapine to *N*-Desmethylclozapine. *Am J Psychiatry* [Internet]. 2015 Jun [cited 2019 May 5];172(6):579–85. Available from: <http://www.ncbi.nlm.nih.gov/pubmed/25859763>

(a)

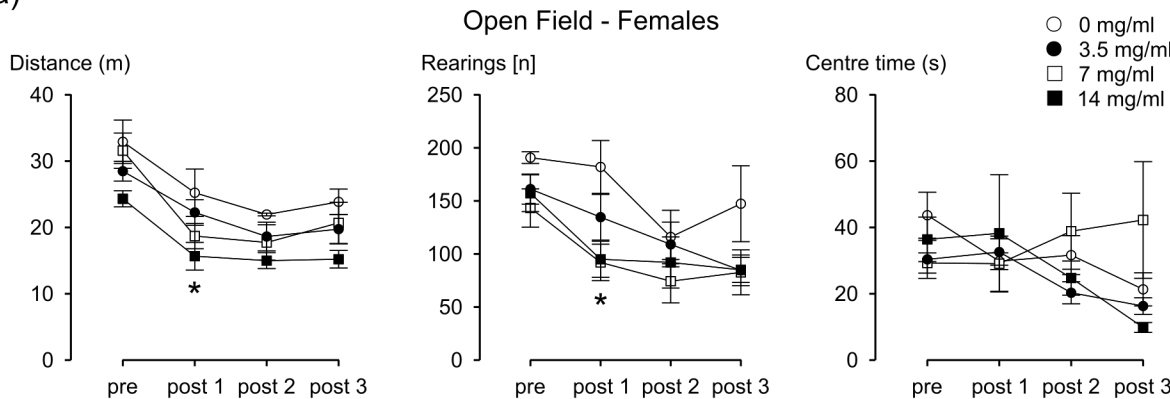


(b)

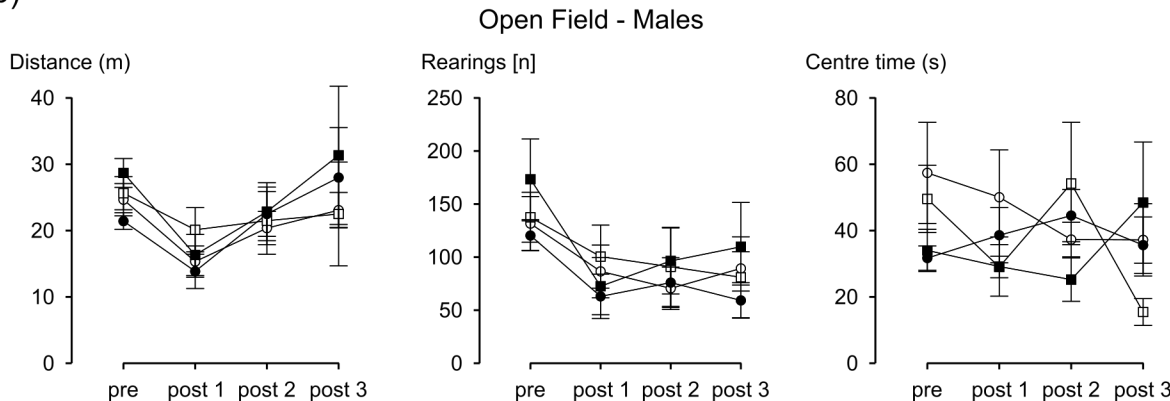
SHIRPA - Females



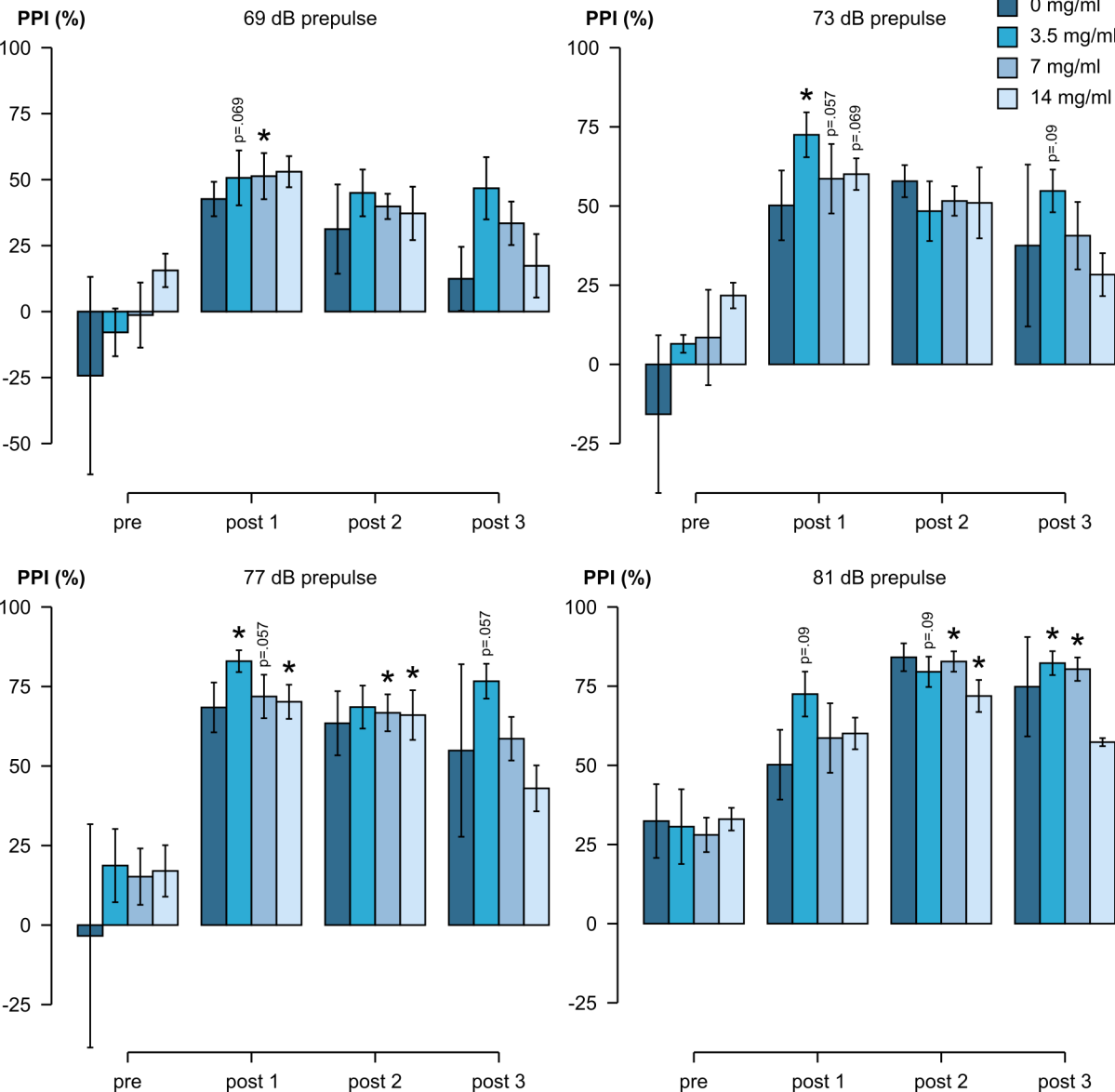
(a)



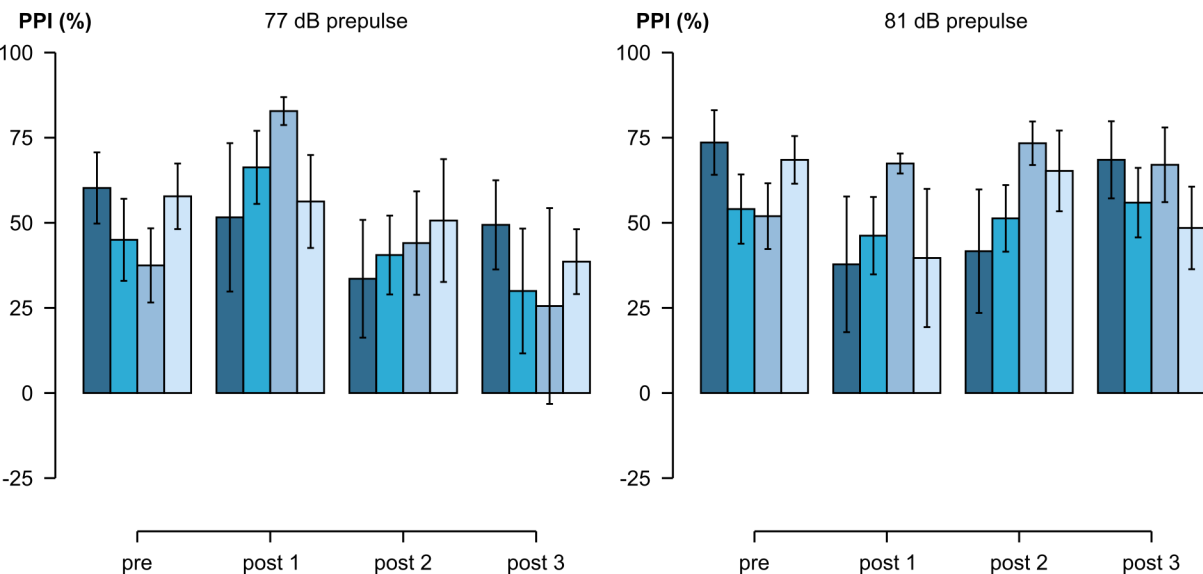
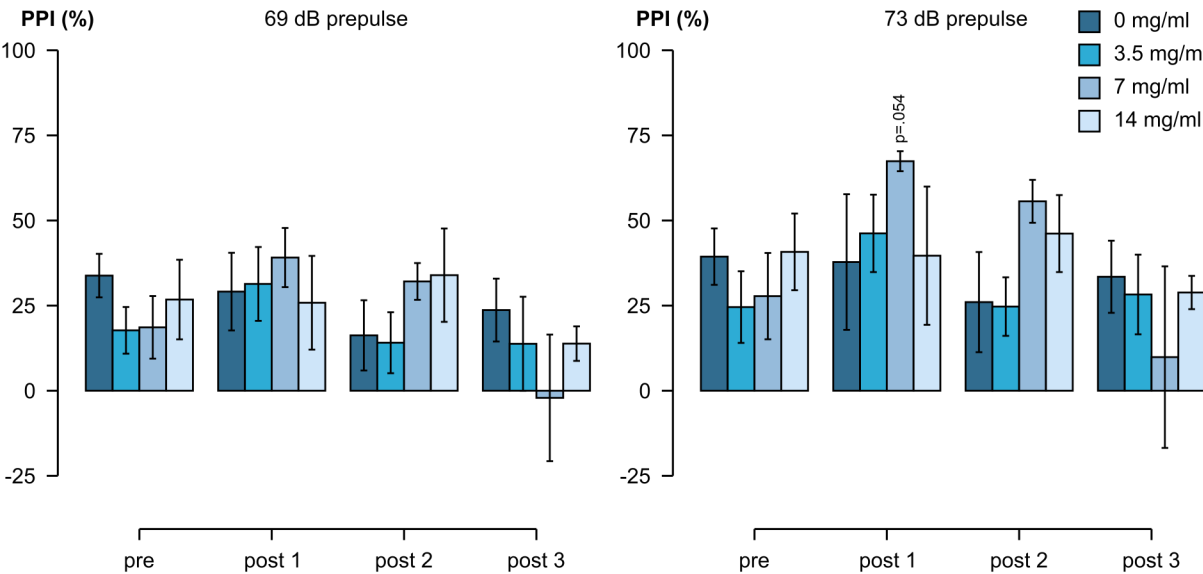
(b)



Prepulse Inhibition - Females



Prepulse Inhibition - Males



Supplementary material

Table S1 Sex differences in behaviour recorded in SHIRPA screen prior to surgery. Behavioral measurements recorded as part of the SHIRPA primary behavioural observation assessment. Data represent score, mean, standard error and statistics (Mann-Whitney U test) of female (n=21) and male (n=24) C57BL/6J mice at 12 weeks of age. Measure with significant effects are given bold face. NA = Not available

| Behavioural measurement | Sex | Mean | Std. error | Statistics |
|-------------------------|--------|-------|------------|------------|
| Body position | female | 3.286 | 0.055 | U=301.5 |
| | male | 3.188 | 0.050 | P=0.197 |
| Tremor | female | 1.905 | 0.066 | U=302.5 |
| | male | 1.667 | 0.115 | P=0.102 |
| Palpebral closure | female | 2.000 | 0.000 | NA |
| | male | 1.917 | 0.058 | |
| Lacrimation | female | 1.000 | 0.000 | NA |
| | male | 1.000 | 0.000 | |
| Spontaneous activity | female | 1.881 | 0.084 | U=311 |
| | male | 1.604 | 0.138 | P=0.115 |
| Urination | female | 0.810 | 0.088 | U=267 |
| | male | 0.750 | 0.090 | P=0.647 |
| Defecation | female | 1.286 | 0.269 | U=189 |
| | male | 2.083 | 0.366 | P=0.145 |
| Transfer arousal | female | 3.381 | 0.146 | U=268 |
| | male | 3.333 | 0.143 | P=0.682 |
| Locomotor activity | female | 21.24 | 1.234 | U=216.5 |
| | male | 21.75 | 0.730 | P=0.424 |
| Gait | female | 3.000 | 0.000 | NA |
| | male | 3.000 | 0.000 | |
| Pelvic elevation | female | 2.000 | 0.000 | NA |
| | male | 1.854 | 0.070 | |
| Tail elevation | female | 1.048 | 0.048 | U=232.5 |
| | male | 1.125 | 0.069 | P=0.381 |
| Startle response | female | 1.190 | 0.088 | U=289.5 |
| | male | 1.042 | 0.042 | P=0.122 |

| | | | | |
|-----------------------------|---------------|--------------|--------------|----------------|
| Touch escape | female | 2.619 | 0.109 | U=275.5 |
| | male | 2.458 | 0.144 | P=0.549 |
| Positional Passivity | female | 2.952 | 0.048 | U=313.5 |
| | male | 2.708 | 0.095 | P=0.036 |
| Limb grasping | female | 0.095 | 0.066 | U=255 |
| | male | 0.083 | 0.058 | P=0.908 |
| Trunk curl | female | 1.000 | 0.000 | NA |
| | male | 1.000 | 0.000 | |
| Pinna reflex | female | 1.000 | 0.000 | NA |
| | male | 1.000 | 0.000 | |
| Corneal reflex | female | 1.000 | 0.000 | NA |
| | male | 1.000 | 0.000 | |
| Contact righting reflex | female | 1.000 | 0.000 | NA |
| | male | 1.000 | 0.000 | |

Table S2 Sex differences in behaviour recorded in in the open field area prior to surgery. ANY-maze measures data represent mean, standard error and statistics (Mann-Whitney U test) of female (n=21) and male (n=24) C57BL/6J mice at 12 weeks of age. Measure with significant effects are given bold face.

| Open field behaviour | Sex | Mean | Std. error | Statistics |
|------------------------------------|---------------|--------------|-------------|-------------------|
| Distance (m) | female | 29.22 | 5.69 | U=362 |
| | male | 24.94 | 5.62 | P=0.012 |
| Time immobile (s) | female | 128.1 | 45.7 | U=110 |
| | male | 190.0 | 60.0 | P<0.001 |
| Line crossings | female | 306.2 | 53.6 | U=335 |
| | male | 276.7 | 53.9 | P=0.061 |
| Max speed (m/s) | female | 0.344 | 0.054 | U=330.5 |
| | male | 0.314 | 0.046 | P=0.076 |
| Photobeam Array: number active (n) | female | 160.8 | 37.1 | U=330 |
| | male | 139.0 | 61.5 | P=0.078 |
| Photobeam Array: time active (s) | female | 75.27 | 13.54 | U=174 |
| | male | 96.52 | 42.62 | P=0.078 |
| Centre time (s) | female | 34.03 | 12.95 | U=184 |
| | male | 44.15 | 27.09 | P=0.125 |
| Centre distance (m) | female | 3.40 | 0.85 | U=275 |
| | male | 3.18 | 0.76 | P=0.612 |

Table S3 Sex differences in startle pulse and prepulse inhibition prior to surgery. Data represent mean, standard error and statistics (Mann-Whitney U test) of female (n=21) and male (n=24) C57BL/6J mice at 12 weeks of age. Measure with significant effects are given bold face.

| Measure | Sex | Mean | Std. error | Statistics |
|--------------------------------|---------------|--------------|-------------|----------------------------|
| Startle pulse | female | 571.3 | 52.0 | U=179 P=0.099 |
| | male | 801.7 | 74.7 | |
| %PPI 4 dB prepulse | female | -3.54 | 8.21 | U=130.5 P=0.006 |
| | male | 24.53 | 4.15 | |
| %PPI 8 dB prepulse | female | 6.45 | 6.55 | U=126 P=0.004 |
| | male | 33.07 | 5.17 | |
| %PPI 12 dB prepulse | female | 13.10 | 7.53 | U=92 P<0.001 |
| | male | 50.23 | 5.47 | |
| %PPI 16 dB prepulse | female | 30.79 | 4.09 | U=77 P<0.001 |
| | male | 62.23 | 4.82 | |
| %PPI Mean prepulse | female | 11.70 | 5.98 | U=95 P<0.001 |
| | male | 42.51 | 4.61 | |