



Research



Cite this article: Galante L *et al.* 2024 Milk metabolite composition of a semi-captive population of Asian elephants. *R. Soc. Open Sci.* **11:** 240930.
<https://doi.org/10.1098/rsos.240930>

Received: 4 June 2024

Accepted: 4 September 2024

Subject Category:

Ecology, conservation, and global change biology

Subject Areas:

physiology, molecular biology, ecology

Keywords:

Elephas maximus, milk composition, milk metabolome, lactation physiology, animal nutrition

Author for correspondence:

Laura Galante

e-mail: laura.galante@swansea.ac.uk

[†]Present address: Medical School, Swansea University, Singleton Campus, Swansea, UK.

Electronic supplementary material is available online at <https://doi.org/10.6084/m9.figshare.c.7514872>.

Milk metabolite composition of a semi-captive population of Asian elephants

Laura Galante^{1,2,†}, Diogo João Franco dos Santos², Elisabeth Mikkonen², Jeannie Horak³, Zorica Stijepic³, Hans Demmelmair³, Andrea Vielhauer³, Berthold Koletzko³, Htet Thi Zaw⁴, Win Htut⁴, Virpi Lummaa² and Mirkka Lahdenperä²

¹School of Medicine, Swansea University, Swansea SA2 8PP, UK

²Department of Biology, University of Turku, Turku FI-20014, Finland

³Department of Metabolic and Nutritional Medicine, Ludwig-Maximilians-University Munich, Medical Center, Munich D-80337, Germany

⁴Myanma Timber Enterprise, Yangon 11011, Myanmar

LG, 0000-0002-6190-7955; EM, 0009-0002-9133-6855; ML, 0000-0003-0062-6284

Lack of maternal milk commonly leads to Asian elephant calves' death in captivity. Currently, available supplements seem inefficient. Hence, we aimed at characterizing the composition of Asian elephant milk to provide information on calves' nutritional needs. Seventy milk samples from 22 Asian elephants living in semi-captivity in their natural environment in Myanmar were collected. Samples were analysed through various techniques including liquid chromatography tandem mass spectrometry, gas chromatography-flame ionization detector, and bicinchoninic acid assay to determine total protein content and various metabolites. Associations with lactation stage (months postpartum) were investigated through repeated measure mixed models. We identified 160 compounds: 22 amino acids, 12 organic acids of the tricarboxylic acid cycle, 27 fatty acids, 15 acyl-carnitines and 84 phospholipids. The milk contained substantial amounts of free glutamate (median: 1727.9, interquartile range (IQR): 1278.4 $\mu\text{mol l}^{-1}$) and free glycine (2541.7, IQR: 1704.1 $\mu\text{mol l}^{-1}$). The fatty acid profile was mostly constituted by saturated fatty acids, particularly capric acid (40.1, IQR: 67.3 g l^{-1}). Milk samples also contained high amounts of carnitines, phospholipids and organic acids. The wide array of metabolites identified and quantified, some of which present high concentrations in the milk from this species as opposed to other species, suggests underpinning

1. Introduction

Milk and the lactation process have evolved to support the survival and development of offspring during their most vulnerable period [1], by meeting the physiological requirements specific to each mammalian species [2]. This is evident when considering comparative milk compositional studies showing that milk significantly differs across species, not only in terms of energy content but also in terms of concentration and structure of specific bioactives [3–6]. Such differences are likely to have important functions in the growth of the offspring and are driven by differences in ecology, development and physiology across different species [7].

For example, the development of large body size and brain most likely requires an energy-dense milk and some specific set of other nutritional and non-nutritional components [8–11]. Elephants are the largest terrestrial mammals and together with humans and great apes display a large and very complex brain [12], which has led to the evolution of very long lactation that lasts between 2 and 8 years in the wild, usually continuing until the mother gives birth to a new calf [13,14]. Behavioural and physiological aspects of lactation, including the extent of milk yield produced by elephant cows, have not been overly studied, however, previous literature on African elephants suggested that milk yield/demand might differ for male vs female calves [13]. Some lactation physiology for these animals has been previously collated by Osthoff in a chapter of the book entitled *'Elephants: ecology, behavior and conservation'* [15]. Briefly, the author reports on milk compositional variations from studies on both African and Asian elephants and according to these changes, particularly in relation to fat content, identifies three lactation stages. Similarly, three lactation stages have been identified by the same author and others in a different publication (colostrum, early to mid-lactation and late lactation) [16], with the middle stage (up to 12 months) where most changes in the nutritional content of the milk happen. However, while Osthoff reports no impact of maternal traits on milk composition, we previously found that size, age, birth origin and parity were significantly associated with the composition of the milk in Asian elephants [17]. As such, it is important that analysis of milk compositional variation across lactation takes into account maternal and offspring factors that might modify the outcome. Such variability in results related to the effect of lactation time on milk composition warrants deeper investigations. Additionally, while research on macronutrients in elephant milk has yielded an overall understanding of the general composition of the milk (extensively reported elsewhere [15]), recent research particularly on human milk, is shedding light on the importance of milk bioactive components in relation to growth, development, and developmental origin of health and diseases [18]. For instance, research on both animal models and humans has shown that the presence of milk fat globule membrane in maternal milk [19] has important implications for infant neurodevelopment [9,20,21]. Similarly, taurine, of which maternal milk is the only source for the nursing offspring, also seems to promote neurodevelopment and improved cognition according to both animal and human studies [22–24]. At the same time, research on primates has shown that the exposure to components in maternal milk across lactation can have different effects on neurodevelopmental outcomes in relation to the maternal environment and the offspring characteristics [25]. Taken together, this research has highlighted the importance of considering milk composition as an important factor for the developmental trajectories (including the development of health and disease) of the offspring. This phenomenon is known as lactocrine programming [26,27]. The accumulation of evidence on this topic is applicable to both human health and animal welfare, particularly when lack of maternal milk is among the primary causes of offspring mortality.

In the case of elephants, hand-rearing can be difficult and often unsuccessful [15,28]. High calf mortality in captivity owing to lack of maternal milk [24] and difficulties in hand rearing of elephants have previously been observed [25–28] highlighting the need for better understanding of the lactation process and milk composition for these animals. Previous reports on calves fed with milk replacers suggest that calves have been subject to bone fracture, diarrhoea and infections, all conditions that can be associated with nutritional deficits. Although previous research shows that the majority of maternal-to-offspring transfer of immunity is transplacental [29], recent literature on the hand-rearing of this species reports that colostrum is crucial for the survival of calves and that denial of any milk provision from mother to calf within 24 h post-birth can result in compromised immunity [30].

Moreover, an analysis of currently available milk replacers by Ward *et al.* [31] suggested that these formulations present a large variability in terms of macronutrient percentage (i.e. fat, lactose and protein). However, such comparison with elephant milk was done using two cows and three lactations spanning from birth to six months, which is a rather limited amount of time in the context of elephant lactation. More recently a hand-raising guide for orphaned Asian elephant has been published online, with a chapter written by Dierenfeld, entirely dedicated to feeding [32]. Here an extensive comparison is made between different milk replacers that are commonly used to hand-rear orphaned calves. Such analysis confirms what was stated by Ward *et al.* showing a large variation in both macronutrients and some vitamins across the formulations used. Most importantly, recent developments in metabolomic technologies are starting to fill the gap around the compositional differences of early life nutritional products for humans showing potential pathways in which different types of feed might affect physiology [33]. As the Asian elephant is currently considered an endangered species with less than 50 000 wild individuals remaining according to the World Wide Fund for nature [34] and more than 25% of the total population living today in captivity [35], defining the early life requirements of the species in order to improve welfare of captive animals can help conservation efforts. For instance, Myanmar hosts the largest semi-captive Asian elephant population [36], most of which is owned by the Myanma Timber Enterprise (MTE). MTE semi-captive elephants live in forest camps, where they are used for logging work during the day, while at night they forage unsupervised with their family groups in the forest. While mortality rates in this population are lower than those in zoo animals [37], young individuals remain at high risk [38]. Maternal death [39] and lack of maternal milk are known to significantly decrease calf survival [38], making access to maternal milk a substantial problem for managing semi-captive and captive elephant populations [5,31,38–40]. Particularly, we previously found that mortality is highest during the first and second year of life (with one in four calves dying during the first year owing to maternal agalactia and/or general weakness of the newborn) [38]. This corresponds to the time when calves were most dependent on maternal milk and maternal care [32].

Yet to date, only a few studies have analysed milk from Asian elephants. While these studies have highlighted the complexity and uniqueness of Asian elephant milk composition by showing its differences in terms of oligosaccharides [41–43] and other compounds [28] in comparison to other mammals' milk, its compositional profile is still largely unknown and the analysed lactation span is limited in terms of length and animals used. Moreover, current data is available mostly on isolated nutrient profiles without an in-depth analysis of the associated metabolome. While similarly to humans, the composition of milk is likely to change between mothers and within mothers [44], and across offspring [17], the existing studies have been carried out in very small sample sizes ($n < 10$ elephants) typically from zoo environments. In these circumstances, the elephants are not consuming their natural diet and are more likely to suffer from abnormal behaviour and health issues [45], which ultimately can reduce their natural lifespan [37]. Diet, health and environmental factors have all been shown to be associated with milk composition in humans and animal models [46–50]. Therefore, the difference in diet and lifestyle between wild and captive elephant populations is also likely to influence the composition of the milk and therefore to obstruct the full characterization of a 'normal' compositional profile for this species. This knowledge gap is therefore reflected on artificial formula milk already existing on the market which being formulated on limited and 'patchy data' possibly fail to provide important compounds currently understudied.

Therefore, the aim of this study was to use a multi-omics approach (metabolomics and lipidomics) in order to provide a comprehensive nutritional characterization of milk metabolites [51] from 22 Asian elephant cows living in semi-captive conditions in Myanmar, where they are used to carry out work within the local logging industry, but forage, breed and socialise unsupervised in their natural habitat. These metabolites include fatty acids, amino acids and organic acids. These elephants provided repeated milk samples at different lactation stages (from 1 to 55 months after birth) offering the opportunity to analyse the changes in milk metabolite composition which might occur across the lactation period. The studies that to date analysed the changes of elephant (both African and Asian) milk composition across lactation suggest that protein and lipid content of milk increases across the lactation period, which slightly varies across the different studies [16,17,44,52,53]. We therefore expected to see similar trends in the present population. Most importantly with the present study, we expected to shed light on previously unidentified and unquantified metabolites that might be found in high concentrations in milk from Asian elephants, therefore indicating a possible physiological function in the growth and development of Asian elephant calves and/or of lactating mothers.

2. Material and methods

2.1. Study design

The present study followed an observational design to explore the milk composition of semi-captive Asian elephants (*Elephas maximus*) from Myanmar.

2.2. Elephant population

The study included 22 Asian elephant females employed as logging elephants by MTE in Kawlin, Myanmar. MTE elephants are used during the day as riding, transport, and draught animals following strict working regulations [54] but at night and during rest periods, they forage in the forest unsupervised. The females included in the current study were not working at the time of the study. The breeding rates for the population are natural and not managed by humans, and many captive-born calves are thought to be sired by wild bulls. Calves born in captivity are cared for by their biological and allo-mothers [55,56]. Mothers and calves are never separated and the calves are allowed to suckle on demand until natural weaning occurs or until taming, which happens at 4 years of age [35]. Myanmar is characterized by three seasons: the cool and dry season (from November to February), the hot and dry season (from March to May) and the rainy monsoon season (from June to October). Mothers rely primarily on natural foraging, with limited additional dietary supplementation. The nutrient composition of the primary forage available to mothers has been described before [17].

Table 1 shows the main characteristics for each mother in the study. Maternal age ranged from 13 to 58 years with an average of 34 (± 13). Mothers' parity at first milk collection varied, with a maximum of nine previous births. However, most mothers (73%) had three or less previous calves and nine mothers (40%) had their first calf. Four mothers (18%) were pregnant during the study time and two of them gave birth before the end of the milk collection period. Calves were almost equally distributed between males (46%) and females (54%). Finally, the lactation period at milk collection varied from 1 to 55 months postpartum, with an average lactation time of 21 (± 14) months postpartum at first sample collection (May 2020). The two mothers who gave birth during the study period provided at least two very early lactation samples each.

2.3. Milk sample collection

Milk samples were collected on the same day once per month ($n = 70$ in total) in May–June 2020 (hot season) and July–August 2020 (rainy monsoon season). All milk samples were collected at or after six months postpartum during the first two months of collection. In order to collect the sample, the calf was allowed to suckle for a few minutes to stimulate milk let-down, the calf was then momentarily displaced in order to allow the collection of around 20 ml of milk via manual expression in a plastic container. Collected samples were moved to 15 ml falcon tubes and transported on ice within 24 h of collection. All vials were stored at -20°C and kept frozen until they were shipped on dry ice to Finland in October 2020. In Finland, samples were thoroughly mixed and aliquotted in 0.5 and 1 ml test tubes and stored at -80°C until analysis or until transfer to the University of Munich Medical Center, where they underwent metabolomic profiling.

2.4. Milk analysis

2.4.1. Total protein quantification

Total protein concentration was analysed through the bicinchoninic acid assay (BCA) method (Pierce BCA Protein assay kit, Thermofisher) after validation for use in elephant milk samples. Validation experiments were conducted on both skimmed and whole milk, and different dilution factors (between 1:20 and 1:50). Whole milk, diluted 1:30 was identified as the optimal preparation for total protein detection with this method, yielding recovery rates between 97 and 110% and intraplate quality control (QC) coefficient of variation (CV) $<1\%$. Validation was conducted in triplicate on milk samples from three different elephant mothers and elephant serum was used as QC. After validation, sample analysis was conducted in single (intraplate QC CV $<10\%$) and was run according to the manufacturer instructions using 10 μl of milk per assay.

Table 1. Mothers, calves and milk collection details (species: *Elephas maximus*). (M, male calf; F, female calf.)

| mother ID | mother date of birth | calf date of birth | parity at first milk collection | calf sex | n of samples | date of first collection | lactation stage at first collection (months) | lactation stage at last collection (months) |
|-----------------|----------------------|--------------------|---------------------------------|----------|--------------|--------------------------|--|---|
| 1 | 01/01/1963 | 13/07/2019 | 7 | M | 4 | 01/05/2020 | 10 | 14 |
| 2 ^a | 01/01/1966 | 04/08/2020 | 9 | F | 4 | 01/05/2020 | 51 | 55 |
| 3 | 21/03/1969 | 03/04/2019 | 7 | M | 2 | 01/06/2020 | 14 | 15 |
| 4 | 01/01/1966 | 25/01/2017 | 5 | M | 4 | 01/05/2020 | 40 | 44 |
| 5 | 11/02/1976 | 08/09/2018 | 2 | M | 4 | 01/05/2020 | 20 | 24 |
| 6 ^b | 12/05/1977 | 03/06/2020 | 3 | F | 4 | 01/05/2020 | 39 | 2 |
| 7 | 02/01/1978 | 05/08/2019 | 3 | M | 4 | 01/05/2020 | 9 | 13 |
| 8 | 04/04/1977 | 28/09/2017 | 6 | F | 4 | 01/05/2020 | 32 | 35 |
| 9 | 17/08/1987 | 25/02/2018 | 3 | M | 2 | 01/05/2020 | 27 | 28 |
| 10 | 03/10/1989 | 01/11/2019 | 4 | F | 4 | 01/05/2020 | 6 | 10 |
| 11 | 24/08/1989 | 01/04/2019 | 2 | F | 1 | 01/06/2020 | 14 | 14 |
| 12 | 10/09/1990 | 03/10/2019 | 3 | M | 4 | 01/05/2020 | 7 | 10 |
| 13 | 16/08/1990 | 08/08/2018 | 1 | F | 2 | 01/05/2020 | 21 | 22 |
| 14 | 09/03/1991 | 27/08/2018 | 3 | F | 4 | 01/05/2020 | 20 | 24 |
| 15 | 10/10/1991 | 25/10/2019 | 1 | M | 1 | 01/07/2020 | 8 | 8 |
| 16 ^a | 01/04/1993 | 31/05/2021 | 1 | M | 2 | 01/07/2020 | 46 | 48 |
| 17 ^b | 04/06/1993 | 11/06/2020 | 1 | F | 4 | 01/05/2020 | 41 | 2 |
| 18 | 11/03/1997 | 17/09/2018 | 1 | F | 2 | 01/05/2020 | 20 | 21 |
| 19 | 01/04/1998 | 08/05/2019 | 1 | F | 4 | 01/05/2020 | 12 | 15 |
| 20 | 26/06/1998 | 30/05/2019 | 1 | M | 4 | 01/05/2020 | 11 | 14 |
| 21 | 01/06/2000 | 06/02/2019 | 1 | M | 2 | 01/07/2020 | 17 | 18 |
| 22 | 10/07/2006 | 07/10/2019 | 1 | F | 4 | 01/05/2020 | 7 | 10 |

^aPregnant during the study,^bGave birth to a new calf during the study.

2.4.2. Multi-platform liquid chromatography tandem mass spectrometry

All solvents were of liquid chromatography tandem mass spectrometry (LC-MS) grade and purchased from Sigma-Aldrich (Schnellendorf, Germany). In total, 200 µl polymerase chain reaction (PCR) 96-well microplates (conical, skirted) were from Axygen (San Francisco, USA) and 1.2 ml 96 deep-well plates (round bottom, low profile) were from BRAND (Wertheim, Germany). Polypropylene PCR microplate foil was from RatioLab (Dreieichen, Germany). PCR microplate aluminum heat sealing foil and the HeatSealer S100 were from Eppendorf (Hamburg, Germany). For elephant milk analysis, 50 µl of elephant milk was directly pipetted into 450 µl of a methanolic internal standard mixture in a 1.3 ml 96 deep well plate. Flocculent protein precipitation was achieved by draw and eject with the pipette tip (20×). After shaking of the well plate at 700 rpm at 25°C (ThermoMixer C with well plate adapter from Eppendorf) and storage at 4°C for 20 min, the well plate was centrifuged for 5 min at 3000 rpm at 22°C (centrifuge ROTINA 380R from Andreas Hettich GmbH & Co. KG (Tuttligen, Germany)) and the supernatant was transferred to a new 1.3 ml 96 deep well plate. The protein pellet was re-suspended with 50 µl water, followed by addition of 75% methyl-tert-butyl ether in methanol. Again, protein precipitation was achieved by draw and eject with the pipette tip (20×). All other steps were performed as described above. The polar metabolite and lipid extracts were pooled and stored at -30°C prior to high performance liquid chromatography-electrospray ionization tandem mass spectrometry (HPLC-ESI-MS/MS) and flow injection analysis-electrospray ionization tandem mass spectrometry (FIA-ESI-MS/MS) analysis.

For analysis, samples were prepared in 200 μl micro-well plates using aluminium heat sealing foils. Per well plate analysis (batch), four control plasma (CPI and CPII) and six QCs (elephant milk sample pools) were used for system performance check and for statistical data cleaning, respectively. Besides that, 74 samples, 10 calibrant solutions, one system blank (water) and one internal standard blank were included per analysis batch. Amino acid HPLC-ESI-MS/MS analysis was performed according to Newton *et al.* [57] with increased highest calibrant concentration of 5 mmol l^{-1} for glycine and glutamic acid, compared to 1 mmol l^{-1} for all other amino acids. HPLC-ESI-MS/MS analysis was done on an Agilent 1100 HPLC system which comprised of a binary pump (G1312A), a degaser (G1379A), column oven (G1316A) and a temperature controlled well plate autosampler (G1367A with G1330B) in combination with an API 2000 triple quadrupole mass spectrometer from Sciex (Ontario, Canada). Organic acid [58], acylcarnitine [59] and phosphor-cholines (PCaa, PCae, LPCa, LPCe and SM; a = acyl and e = ether) [60] were performed on an Agilent 1260 HPLC system comprising of a binary pump (G1312B), degaser (G1379B) and multisampler (G7167A) from Agilent (Waldbronn, Germany) combined with a MayLab MistraSwitch column oven from MayLab (Vienna, Austria) and a QTRAP 4000 mass spectrometer with a Turbo V ESI source from Sciex (Ontario, Canada). Note that the phosphor-cholines were analysed with an FIA method.

MS-data acquisition was performed with ANALYST 1.6.3 and MS-data quantification with MULTIQUANT 3.0.3 from Sciex. For peak integration, isotope correction and quantification of FIA-ESI-MS/MS generated phospho-choline lipid data an in-house developed R-script was used. R and R-Studio statistical scripting language, version 4.1.0 and version 2023.06.0.421 (CRAN) were used [61].

2.4.3. Gas chromatography-flame ionization detector analysis

Total milk fatty acids were analysed as previously described [62]. Briefly, 50 μl of milk were combined with methanolic HCl and internal standard (triundecanoin) containing hexane. Esterified and free fatty acids were transferred into their methyl esters by heating to 100°C. After a cooling phase separation was achieved by the addition of water and hexane. The fatty acid methyl-ester containing hexane phase was used for gas chromatography (Agilent 7890 GC; BPX-70 column). This enabled quantification of fatty acids (g l^{-1}) with chain lengths from 8 to 22 carbon atoms. Fatty acids (CX:Yn-Z) are described by the total number of their C-atoms (X), the number of double bonds (Y) and the number of carbon atoms between the methyl end and the last double bond (Z).

2.5. Statistical analysis of data

Summary values of each component are expressed as median (interquartile range, IQR), as the concentrations of most compounds in the milk are not normally distributed. Therefore, all compounds were log-transformed (\log_{10}) in order to carry out statistical analyses. Unadjusted linear mixed model repeated measure analysis was applied to examine the associations between the most abundant milk components and the lactation stage (months postpartum) across the collection time-points. In addition, multivariate analysis (MANOVA) was carried out on individual packages of metabolites (i.e. amino-acids, fatty acids, carnitines, phospholipids, organic acids of the tricarboxylic acid (TCA) cycle). In this case as it was not practical to fit a repeated measure model owing to the size of the dataset, the median of the concentration of each metabolite across the collected samples for each mother was calculated, together with the median lactation time (months postpartum). For this purpose, models were fitted with and without the two mothers who gave birth on the study (elephant IDs 6 and 17). These mothers transitioned from late lactation to early lactation. When including these mothers in the model we only accounted for the early lactation samples as these were the only mothers providing samples during the first two months postpartum, making these samples more valuable than the late lactation samples. The median of the outcome variables was log-transformed in order to fit the models. Unadjusted models were first tested with only lactation time as a covariate. We then adjusted the model for parity and sex of the calf as they were previously found to be associated with milk composition [17]. Statistical significance was set at $p \leq 0.05$. All statistical analyses were performed using IBM SPSS (version 29). Graphs were created with a SGPLOT procedure in SAS (SAS Institute Inc., 9.4, 2014) and ggplot procedure in R-Studio (version 4.1.1). Heatmaps were created with Excel (Microsoft 365).

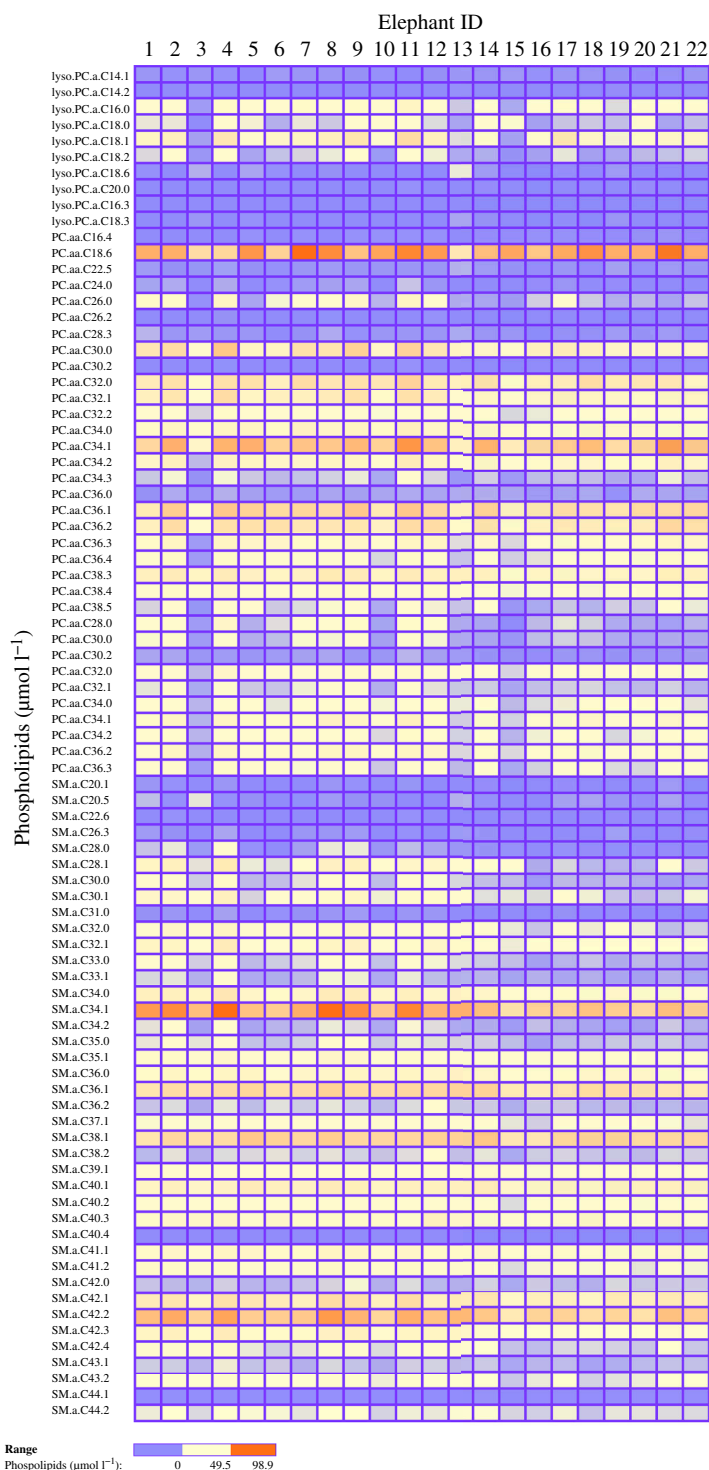


Figure 1. Between-individuals variation of milk amino acids, fatty acids, acylcarnitines and TCA cycle compounds in the 22 Asian elephant mothers included in the study. Columns represent elephants while rows represent metabolites. The red colour signals the highest concentrations of metabolites while blue colour signals the lowest concentrations of metabolites. Values represent average metabolite concentrations across all collections for each elephant (*Elephas maximus*).

3. Results

3.1. Overall composition

Table 2 summarizes the composition of the analysed milk samples across all animals and gives a general idea of the Asian elephant milk metabolome. The median concentration of protein was 3.8 (1.4)

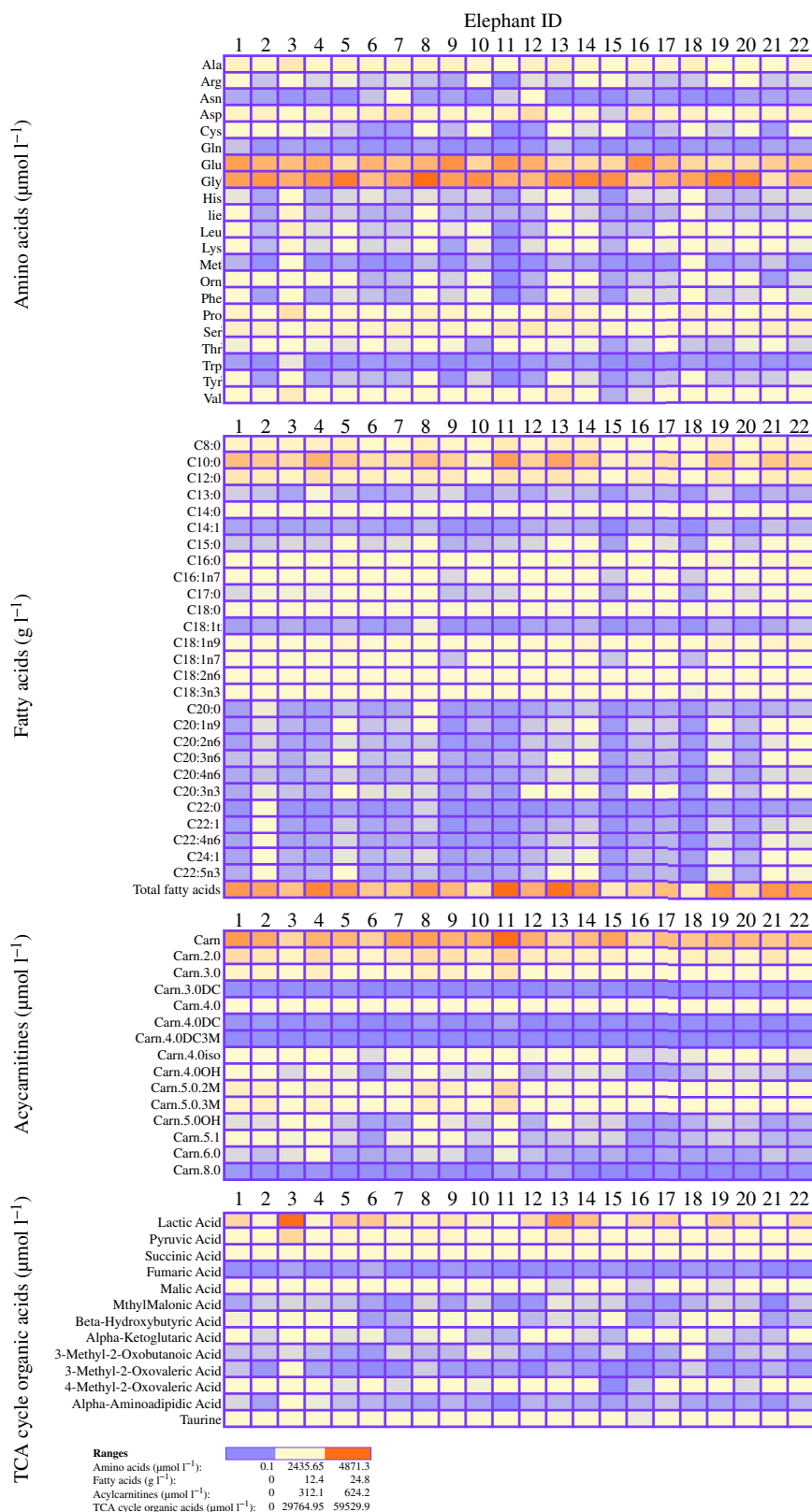


Figure 2. Between-individuals variation of milk phospholipids in the 22 Asian elephant mothers included in the study. Columns represent elephants while rows represent metabolites. The red colour signals the highest concentrations of metabolites while blue colour signals the lowest concentrations of metabolites. Values represent average metabolite concentrations across all collections for each elephant (*Elephas maximus*).

$\text{g } 100 \text{ ml}^{-1}$ and the concentration of total fatty acids was 72.4 (115) g l^{-1} . Notably some metabolites displayed higher concentrations than others. All the identified amino acids displayed relatively high

concentrations ($>3 \mu\text{mol l}^{-1}$) but glutamate (1727.9 (1278.4) $\mu\text{mol l}^{-1}$) and glycine (2541.7 (1704.1) $\mu\text{mol l}^{-1}$) were particularly high. Other abundant amino acids included alanine (220 (227.2) $\mu\text{mol l}^{-1}$), aspartic acid (284.2 (502.1) $\mu\text{mol l}^{-1}$), proline (161.9 (227.6) $\mu\text{mol l}^{-1}$) and serine (201.5 (263.4) $\mu\text{mol l}^{-1}$). The majority of the fat content was constituted by saturated fatty acids, as shown in table 3, particularly capric acid (40.1 (67.3) g l^{-1}) and lauric acid (13.3 (21) g l^{-1}). Oleic acid was the most abundant unsaturated fatty acid (2.8 (5.0) g l^{-1}). Carnitine displayed a median concentration of 287(188.6) $\mu\text{mol l}^{-1}$, while acetyl-carnitine (Carn.2) was the next most abundant acylcarnitine with concentration of 43(83.5) $\mu\text{mol l}^{-1}$. Among the phospholipid metabolites, phosphatidylcholine (PC).aa.C18.6 was the highest (28.5 (32.6) $\mu\text{mol l}^{-1}$), followed by sphingomyelin (SM).a.C34.1 (25 (28.5) $\mu\text{mol l}^{-1}$), SM.a.C42.2 (21.1 (18.9) $\mu\text{mol l}^{-1}$), SM.a.C38.1 (15.7 (9.3) $\mu\text{mol l}^{-1}$) and SM.a.C36.1 (12.7 (7.7) $\mu\text{mol l}^{-1}$). Finally, in the context of glycolysis and TCA cycle, the compounds with the highest concentrations were lactic acid (2511 (24 596) $\mu\text{mol l}^{-1}$), pyruvic acid (745.8 (3066.6) $\mu\text{mol l}^{-1}$), succinic acid (187.6 (454.2) $\mu\text{mol l}^{-1}$) and taurine (55.3 (60.3) $\mu\text{mol l}^{-1}$). Figures 1 and 2 show between-individual variations of the milk metabolite composition in our sample.

3.2. Associations with lactation

Associations with the lactation time (month postpartum) were tested individually for all the most abundant compounds (alanine, aspartic acid, glutamate, glycine, proline, serine, capric acid, lauric acid, oleic acid, carnitine, acetyl-carnitine, PCaaC18.6, SM.a.C42.1, SM.a.C42.2, SM.a.C38.1, SM.a.C36.1, lactic acid, pyruvic acid, succinic acid and taurine), total fatty acids and total protein. The majority of these compounds did not show significant association with the lactation period: total protein and total fatty acids (electronic supplementary material, figure S1), glutamate, glycine, aspartic acid, carnitine, SM.a.C38.1, lactic acid, pyruvic acid and succinic acid; while others showed changes as lactation progressed. In this context, we found significant associations with lactation time for alanine ($p = 0.009$, $\beta = -0.004$), serine ($p = 0.038$, $\beta = -0.004$), lauric acids ($p = 0.017$, $\beta = 0.007$), PCaaC18.6 ($p = 0.034$, $\beta = -0.005$), SM.a.C42.1 ($p = 0.001$, $\beta = 0.006$) and SM.a.C42.2 ($p = 0.001$, $\beta = 0.006$). However, when adjusting the models as described in the methods section, we found that only SM.a.C42.1 ($p = 0.004$, $\beta = 0.006$), alanine ($p = 0.037$, $\beta = -0.004$) and serine ($p = 0.040$, $\beta = -0.004$) were significantly associated with the lactation time. Oleic acids showed a positive trend ($p = 0.082$). Adjusted significant associations with the lactation time are shown in figure 3. When exploring associations between each metabolite class and the lactation time through multivariate (MANOVA) analysis we found different results between models that included elephants 6 and 17 (that gave birth to a new calf during milk collection), vs models that did not include them. Models that included early lactation samples of these two females showed overall significant associations between the lactation time and amino acids (Wilks' Lambda $p = 0.040$) and a trend for the TCA compounds (Wilks' Lambda $p = 0.079$) when unadjusted, while they showed significant associations between lactation time and fatty acids (Wilks' Lambda $p = 0.040$) when adjusted for sex of the calf and parity. Multivariate models that did not include samples from elephants 6 to 17 showed no significant association between the lactation time and any of the metabolite classes when unadjusted, but became significant for TCA compounds (Wilks' Lambda $p = 0.034$) and showed a trend for the carnitines (Wilks' Lambda $p = 0.089$) when adjusted for sex and parity. Nonetheless, for the classes that showed overall significant associations with the lactation time, no significant differences were found for any specific compound over lactation.

3.3 Associations with maternal-calf characteristics and collection time

The adjusted mixed models for the most abundant compounds showed significant positive associations between parity and total protein ($p = 0.001$, $\beta = 0.192$), SM.a.C42.2 ($p = 0.018$, $\beta = 0.029$), and acetyl-carnitine ($p = 0.003$, $\beta = 0.076$). Additionally, carnitine was positively associated with male sex of the calf ($p = 0.015$, $\beta = 0.121$). Multivariate adjusted models (including early samples from elephant 6 to 17) showed an overall trend between fatty acids and parity ($p = 0.050$) and calf sex ($p = 0.060$). Multivariate adjusted models not including samples from elephant 6 to 17 showed an overall significant trend between carnitines and calf sex ($p = 0.062$).

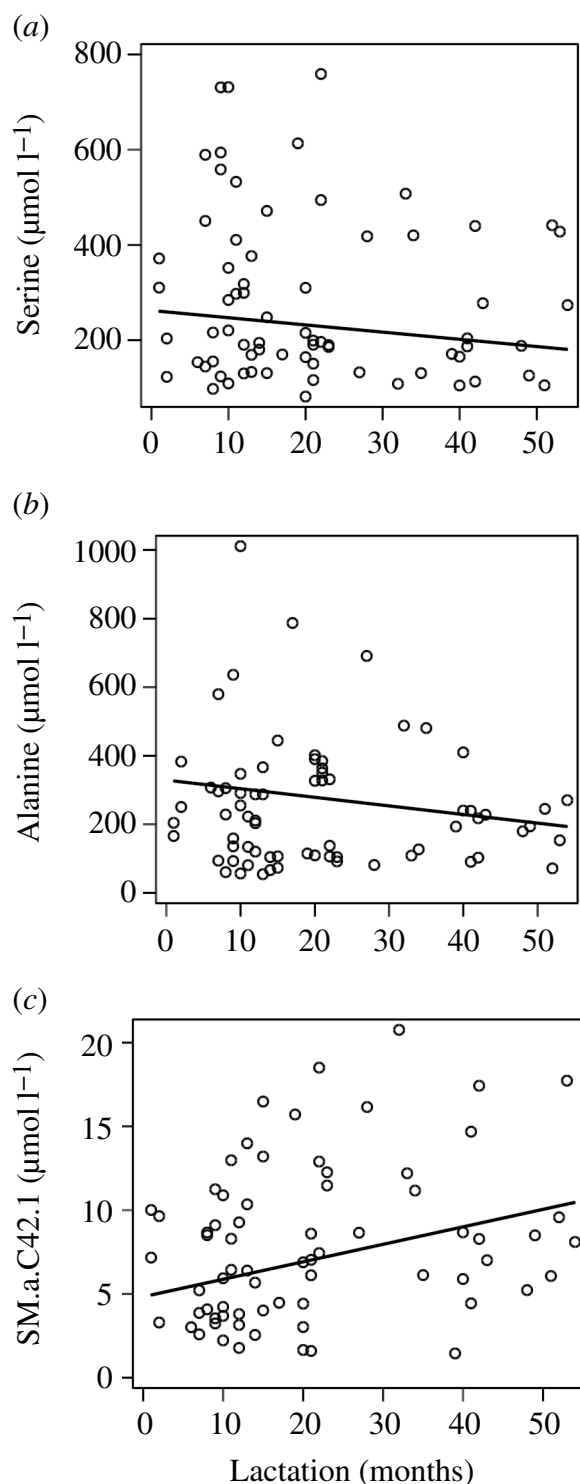


Figure 3. Statistically significant linear regressions between the concentration of the most abundant milk metabolites (serine (a), alanine (b) and SM.a.C42.1(c)) and the lactation time (months postpartum). Individual circles represent raw values. Solid lines represent the predicted values according to each fitted model. Each panel represents adjusted repeated measure models including the outcome variable (milk metabolite), the lactation time, parity and sex of the calf (species: *Elephas maximus*).

4. Discussion

With the present study, we aimed at characterizing the nutritional and metabolite composition of Asian elephant milk collected from animals experiencing their natural habitat and diet. To the best of our knowledge, this study is the first using extensive metabolomic analysis to characterize milk from

Table 2. Summary of the concentration of the components found in the elephant milk samples. ($n = 70$ milk samples (May–August 2020) from 22 females of *Elephas maximus*. C, carbon; PC, phosphatidylcholine; SM, sphingomyeline; a, acyl; e, ether)

| compound | median (IQR) | min-max |
|---|-----------------|--------------|
| protein and amino acids | | |
| total protein (g 100 ml ⁻¹) | 3.8 (1.4) | 1.8–6.4 |
| alanine (μmol l ⁻¹) | 220 (227.2) | 54.5–1011.2 |
| arginine (μmol l ⁻¹) | 32.5 (35.2) | 2.6–133.5 |
| asparagine (μmol l ⁻¹) | 5.4 (15.7) | 0.5–338.2 |
| aspartic acid (μmol l ⁻¹) | 284.2 (502.1) | 8.5–1556.44 |
| cysteine (μmol l ⁻¹) | 15.6 (45.9) | 0.7–224.2 |
| glutamine (μmol l ⁻¹) | 5.4 (4.9) | 1.7–69.1 |
| glutamate (μmol l ⁻¹) | 1727.9 (1278.4) | 34.1–3122.2 |
| glycine (μmol l ⁻¹) | 2541.7 (1704.1) | 553.4–4871.3 |
| histidine (μmol l ⁻¹) | 30 (26.3) | 3.9–160.2 |
| isoleucine (μmol l ⁻¹) | 17.7 (19.7) | 10–310 |
| leucine (μmol l ⁻¹) | 33.4 (83.6) | 3.2–597 |
| lysine (μmol l ⁻¹) | 38 (59.5) | 3.3–284.9 |
| methionine (μmol l ⁻¹) | 4.3 (10.1) | 0.1–110.8 |
| ornithine (μmol l ⁻¹) | 30.7 (67.3) | 1.1–241.8 |
| phenylalanine (μmol l ⁻¹) | 19.4 (46.2) | 0.2–267.1 |
| proline (μmol l ⁻¹) | 161.9 (227.6) | 39.3–925.01 |
| serine (μmol l ⁻¹) | 201.5 (263.4) | 81.8–758.9 |
| threonine (μmol l ⁻¹) | 39 (52) | 7.7–144.5 |
| tryptophan (μmol l ⁻¹) | 5.4 (4.1) | 2.7–69.6 |
| tyrosine (μmol l ⁻¹) | 17.4 (30.9) | 1.7–228.1 |
| valine (μmol l ⁻¹) | 59.5 (82.1) | 15.7–751.8 |
| fatty acids | | |
| total fatty acid (g l ⁻¹) | 72.4 (115) | 7.2–293.8 |
| C8:0 (g l ⁻¹)—caprylic acid | 7 (10.6) | 0.6–39.5 |
| C10:0 (g l ⁻¹)—capric acid | 40.1 (67.3) | 3.6–167.3 |
| C12:0 (g l ⁻¹)—lauric acid | 13.3 (21) | 0.9–53.8 |
| C13:0 (g l ⁻¹)—tridecanoic acid | 0 (0) | 0–0.2 |
| C14:0 (g l ⁻¹)—myristic acid | 1.5 (1.9) | 0.1–5.2 |
| C14:1 (g l ⁻¹)—myristoleic acid | 0(0) | 0–0.1 |
| C15:0 (g l ⁻¹)—pentadecyl acid | 0.1 (0.1) | 0–0.4 |
| C16:0 (g l ⁻¹)—palmitic acid | 2.7 (4.2) | 0.4–25.7 |
| C16:1 n-7 (g l ⁻¹)—palmitoleic acid | 0.2 (0.3) | 0–2.4 |
| C17:0 (g l ⁻¹)—heptadecanoic acid | 0.1 (0.1) | 0–0.1 |
| C18:0 (g l ⁻¹)—stearic acid | 0.4 (0.3) | 0.1–6.7 |
| C18:1 <i>trans</i> (g l ⁻¹)—elaidic acid | 0 (0) | 0–0.3 |
| C18:1 n-9 (g l ⁻¹)—oleic acid | 2.8 (5.0) | 0.5–24.8 |
| C18:1 n-7 (g l ⁻¹)— <i>cis</i> -vaccenic acid | 0.1 (0.2) | 0–1.4 |
| C18:2 n-6 (g l ⁻¹)—linoleic acid | 0.5 (0.7) | 0.1–3.4 |
| C18:3 n-3 (g l ⁻¹)—alpha linoleic acid | 0.3 (0.5) | 0–2.4 |

(Continued.)

Table 2. (Continued.)

| compound | median (IQR) | min-max |
|--|--------------|-----------|
| C20:0 (g l ⁻¹)—arachidic acid | 0.2 (0.02) | 0–0.5 |
| C20:1 n-9 (g l ⁻¹)—eicosenoic acid | 0 (0.1) | 0–0.4 |
| C20:2 n-6 (g l ⁻¹)—eicosadienoic acid | 0 (0) | 0–0.3 |
| C20:3 n-6 (g l ⁻¹)—dihomo-gamma-linolenic acid | 0.1 (0.1) | 0–0.3 |
| C20:4 n-6 (g l ⁻¹)—arachidonic acid | 0 (0) | 0–0.2 |
| C20:3 n-3 (g l ⁻¹)—eicosatrienoic acid | 0.1 (0.1) | 0–0.5 |
| C22:0 (g l ⁻¹)—docosanoic acid | 0 (0) | 0–0.5 |
| C22:1 (g l ⁻¹)—erucic acid | 0 (0.3) | 0.1–0.4 |
| C22:4 n-6 (g l ⁻¹)—adrenic acid | 0 (0) | 0–0.6 |
| C24:1 (g l ⁻¹)—nervonic acid | 0 (0) | 0–0.6 |
| C22:5 n-3 (g l ⁻¹)—docosapentaenoic acid | 0 (0) | 0–0.3 |
| acylcarnitines | | |
| free Carn (µmol l ⁻¹) | 287 (188.6) | 3.3–624.2 |
| Carn 2.0 (µmol l ⁻¹) | 43 (83.5) | 0.2–198–2 |
| Carn 3.0 (µmol l ⁻¹) | 8.7 (15.7) | 0–104.8 |
| Carn 3.0 DC (µmol l ⁻¹) | 0.1 (0) | 0–0.1 |
| Carn 4.0 (µmol l ⁻¹) | 4.6 (4.9) | 0–23 |
| Carn 4.0 DC (µmol l ⁻¹) | 0 (0) | 0–0.3 |
| Carn 4.0 DC3M (µmol l ⁻¹) | 0 (0) | 0–0.1 |
| Carn 4.0 iso (µmol l ⁻¹) | 1.3 (1.4) | 0.1–27.4 |
| Carn 4.0 OH (µmol l ⁻¹) | 0.6 (0.5) | 0–2 |
| Carn 5.0.2 M (µmol l ⁻¹) | 9.6 (12.7) | 0.8–153.4 |
| Carn 5.0.3 M (µmol l ⁻¹) | 8.0 (11.1) | 0.5–128.5 |
| Carn 5.0 OH (µmol l ⁻¹) | 0.4 (0.4) | 0.1–4 |
| Carn 5.1 (µmol l ⁻¹) | 0.6 (0.5) | 0.1–4.5 |
| Carn 6.0 (µmol l ⁻¹) | 0.3 (0.3) | 0–2 |
| Carn 8.0 (µmol l ⁻¹) | 0.1 (0.1) | 0–0.5 |
| phospholipids | | |
| lyso.PC.a.C14.1 (µmol l ⁻¹) | 0 (0.1) | 0–0.4 |
| lyso.PC.a.C14.2 (µmol l ⁻¹) | 0 (0) | 0–0.1 |
| lyso.PC.a.C16.0 (µmol l ⁻¹) | 0.7 (1.8) | 0–4.7 |
| lyso.PC.a.C18.0 (µmol l ⁻¹) | 0.4 (0.7) | 0–2.5 |
| lyso.PC.a.C18.1 (µmol l ⁻¹) | 1 (5.4) | 0–28.6 |
| lyso.PC.a.C18.2 (µmol l ⁻¹) | 0.1 (0.6) | 0–2.9 |
| lyso.PC.a.C18.6 (µmol l ⁻¹) | 0 (0.1) | 0–0.9 |
| lyso.PC.a.C20.0 (µmol l ⁻¹) | 0 (0) | 0–0.1 |
| lyso.PC.e.C16.3 (µmol l ⁻¹) | 0 (0) | 0–0.02 |
| lyso.PC.e.C18.3 (µmol l ⁻¹) | 0 (0) | 0–0.3 |
| PC.aa.C16.4 (µmol l ⁻¹) | 0 (0) | 0–0.1 |
| PC.aa.C18.6 (µmol l ⁻¹) | 28.5 (32.6) | 1.7–98.9 |
| PC.aa.C22.5 (µmol l ⁻¹) | 0.1 (0.1) | 0–0.3 |
| PC.aa.C24.0 (µmol l ⁻¹) | 0 (0.1) | 0–0.5 |

(Continued.)

Table 2. (Continued.)

| compound | median (IQR) | min-max |
|--|--------------|----------|
| PC.aa.C26.0 ($\mu\text{mol l}^{-1}$) | 0.3 (1.35) | 0–6.6 |
| PC.aa.C26.2 ($\mu\text{mol l}^{-1}$) | 0 (0) | 0–0.1 |
| PC.aa.C28.3 ($\mu\text{mol l}^{-1}$) | 0.1 (0.1) | 0–0.9 |
| PC.aa.C30.0 ($\mu\text{mol l}^{-1}$) | 5 (8.24) | 0.2–31.1 |
| PC.aa.C30.2 ($\mu\text{mol l}^{-1}$) | 0 (0) | 0–0.04 |
| PC.aa.C32.0 ($\mu\text{mol l}^{-1}$) | 8.1 (9.7) | 0.3–24.6 |
| PC.aa.C32.1 ($\mu\text{mol l}^{-1}$) | 2.7 (8.6) | 0–23.8 |
| PC.aa.C32.2 ($\mu\text{mol l}^{-1}$) | 0.9 (1.1) | 0.1–3.1 |
| PC.aa.C34.0 ($\mu\text{mol l}^{-1}$) | 2.9 (2.8) | 0.1–8.7 |
| PC.aa.C34.1 ($\mu\text{mol l}^{-1}$) | 14.5 (34) | 0.4–81.5 |
| PC.aa.C34.2 ($\mu\text{mol l}^{-1}$) | 2.1 (5.3) | 0–13.1 |
| PC.aa.C34.3 ($\mu\text{mol l}^{-1}$) | 0.2 (0.6) | 0–1.4 |
| PC.aa.C36.0 ($\mu\text{mol l}^{-1}$) | 0.1 (0.2) | 0–0.5 |
| PC.aa.C36.1 ($\mu\text{mol l}^{-1}$) | 8.9 (19.7) | 0.2–54.3 |
| PC.aa.C36.2 ($\mu\text{mol l}^{-1}$) | 4.4 (15.1) | 0.1–36.7 |
| PC.aa.C36.3 ($\mu\text{mol l}^{-1}$) | 1 (4.6) | 0–9.4 |
| PC.aa.C36.4 ($\mu\text{mol l}^{-1}$) | 0.5 (2) | 0–4.8 |
| PC.aa.C38.3 ($\mu\text{mol l}^{-1}$) | 4.8 (4.7) | 0.6–12.4 |
| PC.aa.C38.4 ($\mu\text{mol l}^{-1}$) | 1.1 (1.9) | 0–4.7 |
| PC.aa.C38.5 ($\mu\text{mol l}^{-1}$) | 0.2 (0.8) | 0–2.6 |
| PC.ae.C28.0 ($\mu\text{mol l}^{-1}$) | 0.3 (0.8) | 0–4.8 |
| PC.ae.C30.0 ($\mu\text{mol l}^{-1}$) | 0.3 (0.5) | 0–2.6 |
| PC.ae.C30.2 ($\mu\text{mol l}^{-1}$) | 0.1 (0.1) | 0–0.3 |
| PC.ae.C32.0 ($\mu\text{mol l}^{-1}$) | 1.1 (1.2) | 0.1–4.1 |
| PC.ae.C32.1 ($\mu\text{mol l}^{-1}$) | 0.4 (0.5) | 0–2.2 |
| PC.ae.C34.0 ($\mu\text{mol l}^{-1}$) | 0.7 (1) | 0–2.7 |
| PC.ae.C34.1 ($\mu\text{mol l}^{-1}$) | 1.7 (3.3) | 0–8.4 |
| PC.ae.C34.2 ($\mu\text{mol l}^{-1}$) | 0.7 (1.2) | 0–2.9 |
| PC.ae.C36.2 ($\mu\text{mol l}^{-1}$) | 1.3 (3.1) | 0–7.8 |
| PC.ae.C36.3 ($\mu\text{mol l}^{-1}$) | 0.5 (1.3) | 0–3.6 |
| SM.a..C20.1 ($\mu\text{mol l}^{-1}$) | 0 (0) | 0–0.1 |
| SM.a..C20.5 ($\mu\text{mol l}^{-1}$) | 0 (0.1) | 0–1.1 |
| SM.a..C22.6 ($\mu\text{mol l}^{-1}$) | 0 (0) | 0–0.1 |
| SM.a..C26.3 ($\mu\text{mol l}^{-1}$) | 0 (0) | 0–0.4 |
| SM.a..C28.0 ($\mu\text{mol l}^{-1}$) | 0 (0.2) | 0–1.6 |
| SM.a..C28.1 ($\mu\text{mol l}^{-1}$) | 0.5 (2.6) | 0–14.9 |
| SM.a..C30.0 ($\mu\text{mol l}^{-1}$) | 0.3 (0.7) | 0–4 |
| SM.a..C30.1 ($\mu\text{mol l}^{-1}$) | 0.7 (1.8) | 0–8 |
| SM.a..C31.0 ($\mu\text{mol l}^{-1}$) | 0 (0) | 0–0.2 |
| SM.a..C32.0 ($\mu\text{mol l}^{-1}$) | 0.8 (1.5) | 0.1–6.5 |
| SM.a..C32.1 ($\mu\text{mol l}^{-1}$) | 1.4 (2) | 0–12.7 |
| SM.a..C33.0 ($\mu\text{mol l}^{-1}$) | 0.4 (0.6) | 0–3 |

(Continued.)

Table 2. (Continued.)

| compound | median (IQR) | min-max |
|--|----------------|---------------|
| SM.a.C33.1 ($\mu\text{mol l}^{-1}$) | 0.3 (0.3) | 0–1.2 |
| SM.a.C34.0 ($\mu\text{mol l}^{-1}$) | 3 (3) | 0.3–12.8 |
| SM.a.C34.1 ($\mu\text{mol l}^{-1}$) | 25 (28.5) | 3.3–82.6 |
| SM.a.C34.2 ($\mu\text{mol l}^{-1}$) | 0.3 (0.4) | 0–1.3 |
| SM.a.C35.0 ($\mu\text{mol l}^{-1}$) | 0.5 (0.4) | 0.1–2 |
| SM.a.C35.1 ($\mu\text{mol l}^{-1}$) | 1.4 (1.5) | 0.2–5.2 |
| SM.a.C36.0 ($\mu\text{mol l}^{-1}$) | 2.7 (2) | 0.6–7.2 |
| SM.a.C36.1 ($\mu\text{mol l}^{-1}$) | 12.7 (7.7) | 2.2–31 |
| SM.a.C36.2 ($\mu\text{mol l}^{-1}$) | 0.4 (0.4) | 0–1 |
| SM.a.C37.1 ($\mu\text{mol l}^{-1}$) | 0.9 (0.6) | 0.1–2.1 |
| SM.a.C38.1 ($\mu\text{mol l}^{-1}$) | 15.7 (9.3) | 3.4–40.1 |
| SM.a.C38.2 ($\mu\text{mol l}^{-1}$) | 0.4 (0.4) | 0–1.5 |
| SM.a.C39.1 ($\mu\text{mol l}^{-1}$) | 1.5 (1.1) | 0.3–3.2 |
| SM.a.C40.1 ($\mu\text{mol l}^{-1}$) | 5.4 (4.1) | 1.2–15.1 |
| SM.a.C40.2 ($\mu\text{mol l}^{-1}$) | 1 (1.20) | 0.1–3.7 |
| SM.a.C40.3 ($\mu\text{mol l}^{-1}$) | 2.1 (2.9) | 0.2–10.7 |
| SM.a.C40.4 ($\mu\text{mol l}^{-1}$) | 0 (0) | 0–0.01 |
| SM.a.C41.1 ($\mu\text{mol l}^{-1}$) | 2.4 (2.2) | 0.6–7 |
| SM.a.C41.2 ($\mu\text{mol l}^{-1}$) | 1 (1.3) | 0.1–4.7 |
| SM.a.C42.0 ($\mu\text{mol l}^{-1}$) | 0.3 (0.3) | 0–1 |
| SM.a.C42.1 ($\mu\text{mol l}^{-1}$) | 7.1 (6.9) | 1.5–20.8 |
| SM.a.C42.2 ($\mu\text{mol l}^{-1}$) | 21.1 (18.9) | 3.3–58.4 |
| SM.a.C42.3 ($\mu\text{mol l}^{-1}$) | 2.3 (2.7) | 0.3–12.1 |
| SM.a.C42.4 ($\mu\text{mol l}^{-1}$) | 0.5 (0.7) | 0.1–4 |
| SM.a.C43.1 ($\mu\text{mol l}^{-1}$) | 0.3 (0.3) | 0–0.8 |
| SM.a.C43.2 ($\mu\text{mol l}^{-1}$) | 0.7 (1) | 0.1–3.9 |
| SM.a.C44.1 ($\mu\text{mol l}^{-1}$) | 0 (0) | 0–0.1 |
| SM.a.C44.2 ($\mu\text{mol l}^{-1}$) | 0.5 (0.6) | 0.1–2 |
| organic acids and keto-acids | | |
| lactic acid ($\mu\text{mol l}^{-1}$) | 2511 (24596) | 123.5–59529.9 |
| pyruvic acid ($\mu\text{mol l}^{-1}$) | 745.8 (3066.6) | 28–21563.5 |
| succinic acid ($\mu\text{mol l}^{-1}$) | 187.6 (454.2) | 1.7–2963.6 |
| fumaric acid ($\mu\text{mol l}^{-1}$) | 1 (1.2) | 0.3–12.6 |
| malic acid ($\mu\text{mol l}^{-1}$) | 12.3 (19.6) | 1.3–76.6 |
| methyl-malonic acid ($\mu\text{mol l}^{-1}$) | 2.9 (5.9) | 0.2–21.5 |
| beta-hydroxybutyric acid ($\mu\text{mol l}^{-1}$) | 7.2 (10.2) | 0.7–100.5 |
| alpha-ketoglutaric acid ($\mu\text{mol l}^{-1}$) | 7 (9.3) | 1.6–91.7 |
| 3-methyl–2-oxobutanoic acid ($\mu\text{mol l}^{-1}$) | 4.4 (3.6) | 1.1–17.7 |
| 3-methyl–2-oxovaleric acid ($\mu\text{mol l}^{-1}$) | 1.6 (1.8) | 0–50.3 |
| 4-methyl–2-oxovaleric acid ($\mu\text{mol l}^{-1}$) | 10.9 (22.3) | 0–518.3 |
| alpha amino adipic acid ($\mu\text{mol l}^{-1}$) | 3.3 (2.9) | 0.2–17.4 |
| taurine ($\mu\text{mol l}^{-1}$) | 55.3 (60.3) | 7.7–390.4 |

Table 3. Percentages of individual fatty acids in relation to total fatty acids in milk from *Elephas maximus*.

| fatty acid | % |
|--|------|
| C8:0 (g l ⁻¹)—caprylic acid | 9.7 |
| C10:0 (g l ⁻¹)—capric acid | 55.4 |
| C12:0 (g l ⁻¹)—lauric acid | 18.4 |
| C13:0 (g l ⁻¹)—tridecanoic acid | 0.0 |
| C14:0 (g l ⁻¹)—myristic acid | 2.1 |
| C14:1 (g l ⁻¹)—myristoleic acid | 0.0 |
| C15:0 (g l ⁻¹)—pentadecyl acid | 0.1 |
| C16:0 (g l ⁻¹)—palmitic acid | 3.7 |
| C16:1 n-7 (g l ⁻¹)—palmitoleic acid | 0.3 |
| C17:0 (g l ⁻¹)—heptadecanoic acid | 0.1 |
| C18:0 (g l ⁻¹)—stearic acid | 0.6 |
| C18:1 <i>trans</i> (g l ⁻¹)—elaidic acid | 0.0 |
| C18:1 n-9 (g l ⁻¹)—oleic acid | 3.9 |
| C18:1 n-7 (g l ⁻¹)— <i>cis</i> -vacenic acid | 0.1 |
| C18:2 n-6 (g l ⁻¹)—linoleic acid | 0.7 |
| C18:3 n-3 (g l ⁻¹)—alpha linolenic acid | 0.4 |
| C20:0 (g l ⁻¹)—arachidic acid | 0.3 |
| C20:1 n-9 (g l ⁻¹)—eicosenoic acid | 0.0 |
| C20:2 n-6 (g l ⁻¹)—eicosadienoic acid | 0.0 |
| C20:3 n-6 (g l ⁻¹)—dihomo-gamma-linolenic acid | 0.1 |
| C20:4 n-6 (g l ⁻¹)—arachidonic acid | 0.0 |
| C20:3 n-3 (g l ⁻¹)—eicosatrienoic acid | 0.1 |
| C22:0 (g l ⁻¹)—docosanoic acid | 0.0 |
| C22:1 (g l ⁻¹)—erucic acid | 0.0 |
| C22:4 n-6 (g l ⁻¹)—adrenic acid | 0.0 |
| C24:1 (g l ⁻¹)—nervonic acid | 0.0 |
| C22:5 n-3 (g l ⁻¹) docosapentaenoic acid | 0.0 |

Asian elephants. The study was able to identify the presence and concentration of 160 metabolites (22 amino acids, 27 fatty acids, 15 acyl-carnitines, 84 phospholipids and 12 compounds of the TCA cycle). The study showed that some metabolites in each category were particularly abundant compared to others, suggesting a possible role in the healthy development of Asian elephant calves. Some of the compounds tested showed an association with the lactation time, suggesting that time of exposure to specific milk components might also be crucial to ensure normal growth and development of the offspring and/or signalling a shift in the metabolism of the mammary gland. Finally, we also observed that a few components were significantly associated with the parity and sex of the offspring, suggesting that both these factors have an effect on lactation physiology and should be taken into account when analysing milk composition.

To the best of our knowledge, this was the first study yielding a comprehensive profiling of the Asian elephant milk metabolome. Our group previously analysed milk from six females belonging to the same population of Asian elephants (i.e. MTE owned semi-captive animals), finding that fat, protein, ash and vitamin E content of the milk varied with the lactation month and season, possibly in relation to the variation of nutrients in the forage consumed by mothers [17]. This report was the first on milk composition of Asian elephants living in their natural habitat. With the present study, we sought to analyse a substantially bigger sample number and to identify new components present in the Asian elephant milk that might have a crucial role in calf growth and development. In fact, previous studies on this species only analysed single classes of components including glucosamine

[28], oligosaccharides [41,42,63], or generic nutritional composition [17,44]. These studies were carried out on a limited number of animals (between 1 and 6 animals) and all, except our previous study, collected milk from animals held in captive environments. More research has been conducted on African elephant (*Loxodonta africana*) milk [16,43,52,53,64,65], including a metabolomic analysis, which was recently published [65]. Nonetheless, this study was also carried out on a limited number of animals ($n = 3$), and while the animals were living in their natural habitat, the study only quantified 36 metabolites, 14 of which remained unidentified. The present study is therefore, to date, the most comprehensive metabolomic analysis of elephant milk.

Our study found that Asian elephant milk was very rich in glutamate and glycine. These two amino acids were over 10 times more concentrated than the second most abundant amino acids (e.g. alanine) and over 300 times more concentrated than the least abundant amino acids (e.g. methionine) in the analysed milk samples. Glutamate is also the most abundant free amino acid found in milk from humans and other animals [66,67] and recent research on African elephant milk also confirms high concentration in this taxa [65]. In this publication the authors suggest that the high concentration of glutamate might be linked to the gluconeogenic nature of this metabolite and linked to the high saccharide content in the milk, although we cannot confirm or disprove this. In relation to our results, the high concentrations of glutamate in comparison to other amino acids might be explained by the mammary gland physiology during lactation (although no data is available for this species), which entails a substantial catabolism of branched-chained amino acids (leucine, isoleucine, valine) and arginine for the production of glutamate [68–70]. As previous literature describes, dietary glutamate is used by the newborn intestinal mucosa as a source of energy, glutathione and other essential amino acids [66,68]. Similarly, glycine is also abundant in milk from other species (e.g. pigs) [70] and a substrate for the synthesis of glutathione, protein and nucleic acids [71,72]. Furthermore, it is interesting to note that both glutamate and glycine are molecules with a neurotransmitter function [73–75] and although research on whether dietary glycine has any neuromodulatory function seems to be particularly scarce, research has shown that dietary glutamate can have a positive influence on brain development [76].

In relation to the lipid profile, our samples contained around 7% of total fatty acids. This was lower compared to the total fat% previously reported by our group (15%) [17]. The present study only quantified fatty acids, which inevitably led to a slight underestimation of the milk total fat content. Moreover, the total fat% reported by various publications seems to be generally variable [53] and our previous study found that the fat component was indeed one of the most affected by the dietary intake of the mother [17]. The fact that only 20 ml of milk was collected from mothers could also affect the total fat concentration in the sample. Indeed, it is known that fore milk (milk at the beginning of the feed) and hindmilk (milk at the end of the feed) significantly differ in terms of fat content [77,78]. Fat content in elephant milk is much higher than that found in milk from humans and some farmed species (e.g. cow, horse, goat), while it is closer to the milk from buffalos (5–15%) and sheep (4.9–7%) [79]. In line with what has been reported by previous literature on elephant milk [16,64,65] saturated fats made up the majority of the fatty acid profile in our samples, with capric acid being the most abundant and making up almost 60% of the total fatty acid content. Once again, it is interesting to note that capric acid is a neuroactive component that can serve as alternate source of energy to the brain thanks to its ability to cross the blood-brain barrier [80], suggesting that Asian elephant calves, or all elephant calves, display increased needs for this fatty acid. Additionally, capric acid also seems to bring benefits to intestinal health [81], which is often a problem in hand-reared Asian elephants [82]. Yet, milk replacers currently available on the market for the hand-rearing of Asian elephants contain very variable amounts of this compound and an unknown amount of glutamate or glycine [31], which the present study also found in high concentration in elephant milk.

Our study also identified a number of short- and medium-chain acyl-carnitines (C2-8) in the milk of Asian elephants. Acyl-carnitines are fatty acid metabolites involved in energy production and metabolic pathways [83]. Our milk samples displayed high concentrations of carnitine and acetyl-carnitine (Carn.2). Few studies in the literature describe the acylcarnitine profile of milk from different animals and of different formulas [84,85]. These limited data suggest that carnitine profile can change significantly across species. For instance, milk from water buffalo (*Bubalus bubalis*) was reported to contain much higher concentrations of acyl carnitines (and similar to concentrations observed in our samples) compared to milk from cows [84]. As carnitines play an important role in energy production, especially during early life [83], when newborns are less efficient in endogenously synthesizing them [83,86,87], such variability could have important implications for the health outcomes of hand-reared animals. Previous research in rats suggests that mothers deplete their body reserves of carnitines,

especially during early lactation to transfer them to the newborn through the milk [88]. While in our study we did not find an association between acylcarnitines and the lactation period, our population was predominantly constituted by mothers in mid-late lactation (as discussed more extensively later in the discussion).

The analysis of the phospholipid metabolites in our samples showed the presence of phosphatidylcholines (PC $96 \mu\text{mol l}^{-1}$) and sphingomyelins (SM $113.6 \mu\text{mol l}^{-1}$). These are commonly known to be among the abundant species of phospholipids in milk, and research on human milk carried out already in the 1980s showed similar concentration to those we identified in the Asian elephant [89]. Nonetheless, more recent research shows that the phospholipid profile can be different across mothers of the same species [90–92] and across mothers of different species [93]. Particularly human milk seems to have higher amounts of both PC and SM compared to farm animals [93]. The similarities between human and elephant milk in this context may once again suggest a role of these compounds in the neurodevelopment of elephants' large brain and cognition. Phospholipids are the major constituents of cell membrane, and the literature indeed suggests that dietary phospholipids in early life can affect cognition and brain development in both humans [11] and other mammals with complex brain structure such as pigs [94]. In the mammary gland, phospholipids are essential for the secretion of lipids, carrying out important structural functions as part of milk fat globules [92,95]. Finally, milk phospholipids are known to act as an emulsifier for liposoluble substances affecting their digestibility [92,96]. This is particularly important to note in relation to the digestibility of milk replacers for orphaned calves where the phospholipid composition might not replicate that of maternal milk.

Our study found that Asian elephant milk contained high amounts of lactate, pyruvate and succinate. These three organic acids are part of the glucose metabolism and as such cover important roles in ATP production and energy metabolism [97–99]. While these metabolites are mostly used as biomarkers for various diseases [86], previous research on dairy cows suggests that the milk metabolome is a good proxy for the mammary gland metabolome and can provide information on the mammary gland metabolic status during lactation [100]. Furthermore, the same study showed that during lactation, gluconeogenesis, pyruvate metabolism, the TCA cycle and the aspartate metabolism pathways were most active in the mammary gland [100]. These findings are in line with some of the compounds that we saw as most abundant in our milk samples, including lactate, pyruvate, carnitine, glutamate and glycine. Oral administration of these organic acids of the TCA cycle can play an important role in gut physiology, including food intake regulation [101], improved mitochondrial activity in skeletal muscle [102] and glucose homeostasis [103] in the newborn. Nonetheless, such high lactate and pyruvate concentrations in our samples could also be owing to the activity of lactic acid bacteria after sample collection. In fact, despite the efforts made to preserve sample quality, the collection of samples from Asian elephants in a low-income country presented its challenges and we cannot exclude bacterial proliferation and contamination in our samples. Taurine was also present in our samples in relatively high quantities compared to other metabolites, although in much lower concentrations compared to what has been reported in human milk [104]. The role of taurine in the perinatal period is well established [10,22,23]. Thus, its presence in milk of the Asian elephants was expected. Previous literature on rats suggests that taurine present in maternal milk is both transported from the blood stream and synthesized in the mammary gland from methionine, cysteine (both of which we found in small amounts in our milk samples) and homocysteine [105]. Considering the implications for taurine in the developmental origin of health and diseases in humans and other animals [105], particularly from a behavioural and neurological standpoint, it seems logical to think that this would be the same for Asian elephant calves. This observation could be particularly relevant for captive and semi-captive restrained animals where environmental stress might cause taurine depletion in mothers, as previously observed in mice [106], or where the provision of inadequate early life nutrition in the absence of maternal milk might impair calf development, as previously shown in monkeys [107].

Lastly, our results suggest that the majority of the tested compounds remained stable during lactation, while only three compounds showed linear associations with the lactation stage (alanine, serine and SM.a.C42.1) when the analysis was adjusted for factors affecting lactation, such as parity and sex of the calf. While unadjusted models found a significant linear association with various compounds (alanine, serine, lauric acid, SM.a.C42.1, PC.aa.C18.6, SM.a.C42.2) these associations might not be reflecting true changes in the milk composition as they fail to take into account major factors that impact on the variability of milk composition across mothers [13,46,47,108,109]. Furthermore, multivariate analysis also showed that the association between milk composition and the lactation stage were mild and mostly non-significant. Our results are not fully aligned with previous studies

where a linear increase of lipid and protein content in the milk across lactation had been suggested, while we can confirm that no clear pattern was reported with the phospholipids as previously reported by Kobeni *et al.* [16,17,44,53]. Overall, this discrepancy might suggest that the diversity and limitations that affect this and previous studies in the field (e.g. the use of few animals and the pooling of lactations to describe the variation of milk components over time) need to be addressed in order to obtain a full characterization of elephant milk composition across the lactation time. In light of this, we strongly advise that future research focuses on conducting more thorough research on how the lactation stage might affect milk composition in the Asian elephant through a longitudinal study design including multiple mothers followed-up from birth to late lactation. Additionally, the study should include taking into account maternal and offspring factors that have been demonstrated or suggested to affect the physiology of the mammary gland during lactation. For instance, parity is an essential factor to take into account in this context as different parity corresponds to different degrees of mammary gland maturation [108] which reflects in milk yield and composition. The sex of the offspring is also emerging as an important factor in terms of maternal investment related to lactation, as shown by studies on various species [13,46,47,109]. As a matter of fact, significant associations with both parity (total protein and acetyl-carnitine) and the sex of the offspring (carnitine) were evidenced by our analysis. In this context the sex-specific difference in carnitine, showing increased carnitine levels in milk produced for male calves might suggest either or both an increased maternal metabolism/investment when feeding male calves, or increased male offspring needs, possibly driven by increased energy expenditure compared to female calves. A deeper exploration of these factors is warranted to understand the origins of milk compositional variations across and within mothers.

Strengths of the present study include the novelty of the analysis carried out, which resulted in the identification and quantification of compounds in the milk of Asian elephants that were never identified and quantified before. In fact, to our knowledge, the study constitutes the most comprehensive metabolite profiling of Asian elephant milk composition to date. The semi-captive environment in which the study animals live and the sample size are further strengths of the study, given the fact that most of the previous research on the Asian elephant focused on a few captive animals. On the other side, the possibility of contamination from environmental bacteria and the scarcity of milk collected during early lactation are weak points of our research design. The secluded location of the timber camps and poorly developed transport networks presented challenges for the collection of samples, but all efforts were made to minimize sample spoilage and contamination. Instructions for sample collection were provided to local staff, and refrigeration was arranged during transport from the collection site to the research office, where the samples were stored until shipping to Finland.

5. Conclusion

The present study sheds light on the presence and quantity of metabolites in the milk of Asian elephants living in their natural habitat. The study found that there are compounds such as glutamate, glycine, capric acid, phosphatidylcholine, sphingomyelin, carnitine, lactate, pyruvate and succinate that are present in rather high concentrations in the milk from this species. Such high concentrations might be linked to specific physiological roles that these compounds cover during early life and that might be crucial for the survival of Asian elephant calves. Additionally, our study found associations between few of these compounds and the lactation stage, although milk composition mostly seemed stable over the lactation period considered in our sample. Associations found between milk composition and factors such as parity and sex of the offspring confirm the involvement of these factors in the physiology of the lactating mammary gland and need to be further explored. Given that our study highlighted the presence and composition of abundant compounds in the milk of this species, future research should investigate whether currently marketed milk replacers contain similar quantities of these compounds and if not, whether these can be safely and timely introduced for the successful hand-rearing of Asian elephant calves with no access to maternal milk. Finally, further research should investigate whether and how these components vary across different mothers and whether variability in their concentration is linked to maternal and calf health.

Ethics. All samples were collected by local veterinarians in charge of the MTE elephants' healthcare following the ethical guidelines of the University of Turku and approval by the Myanmar Ministry of Natural Resources and Environmental Conservation, and exported respecting the local Nagoya protocol and CITES authorization.

Data accessibility. Owing to proprietary reasons and in line with agreements between the University of Turku and Myanma Timber Enterprise (MTE) the authors are not able to publish the dataset used for the study. Access to the data can be requested to the data handlers for the study (Prof Virpi Lummaa: virpi.lummaa@utu.fi, and Dr. Mirkka Lahdenperä: mirkka.lahdenpera@utu.fi).

Supplementary material is available online [110].

Declaration of AI use. We have not used AI-assisted technologies in creating this article.

Authors' contributions. L.G.: conceptualization, data curation, formal analysis, funding acquisition, investigation, methodology, project administration, validation, visualization, writing—original draft; D.J.FdS.: methodology, project administration, validation, writing—review and editing; E.M.: data curation, writing—review and editing; J.H.: methodology, validation, writing—review and editing; Z.S.: methodology, validation, writing—review and editing; H.D.: methodology, validation, writing—review and editing; A.V.: methodology, validation, writing—review and editing; B.K.: resources, writing—review and editing; H.T.Z.: project administration, resources; W.H.: project administration, writing—review and editing; V.L.: conceptualization, funding acquisition, investigation, project administration, resources, supervision, writing—review and editing; M.L.: conceptualization, formal analysis, investigation, visualization, writing—review and editing.

All authors gave final approval for publication and agreed to be held accountable for the work performed therein.

Conflict of interest declaration. We declare we have no competing interests.

Funding. This study was financially supported by The European Research Council (Elephant Project, ERC-2014-CoG number 648766, KinSocieties, ERC-2022-ADG, number 101098266—V.L.), Oskar Öflunds Stiftelse—L.G., Aaltonen Foundation (230125 N31)—E.M., and the Strategic Research Council within the Research Council of Finland (grant numbers 345185 and 345183—NetResilience consortium)—M.L. and V.L.

Acknowledgements. The authors are thankful for the research team involved in the sample and data collection, particularly Khin Than Win, Thuzar Thwin, San Win (MTE, Vet Inspector), Myo Zaw Win (MTE, Vet Inspector), Dr Hla Min Oo, Aung Myo Tun (MTE, Vet Inspector).

References

- Oftedal OT. 2012 The evolution of milk secretion and its ancient origins. *Animal* **6**, 355–368. (doi:10.1017/S1751731111001935)
- Power ML, Shulkin J. 2016 *Milk: the biology of lactation*. Baltimore, US: Johns Hopkins University Press.
- Gantner V, Mijic P, Baban P, Skrtic Z, Turalija A. 2015 The overall and fat composition of milk of various species. *Mljek*. **65**, 223–231. (doi:10.15567/mljekarstvo.2015.0401)
- Lu J, Wang X, Zhang W, Liu L, Pang X, Zhang S, Lv J. 2016 Comparative proteomics of milk fat globule membrane in different species reveals variations in lactation and nutrition. *Food Chem*. **196**, 665–672. (doi:10.1016/j.foodchem.2015.10.005)
- Takatsu Z *et al.* 2020 Glucosamine contents of milk hydrolysates from various mammals. *Th. J. Vet. Med.* **50**, 583–587. (doi:10.56808/2985-1130.3065)
- Mitina A, Mazin P, Vanyushkina A, Anikanov N, Mair W, Guo S, Khaitovich P. 2020 Lipidome analysis of milk composition in humans, monkeys, bovids, and pigs. *BMC Evol. Biol.* **20**, 1–8. (doi:10.1186/s12862-020-01637-0)
- Skibiell AL, Downing LM, Orr TJ, Hood WR. 2013 The evolution of the nutrient composition of mammalian milks. *J. Anim. Ecol.* **82**, 1254–1264. (doi:10.1111/1365-2656.12095)
- Mohamed HJJ, Lee EKH, Woo KCK, Sarvananthan R, Lee YY, Mohd Hussin ZA. 2022 Brain-immune-gut benefits with early life supplementation of milk fat globule membrane. *JGH Open* **6**, 454–461. (doi:10.1002/jgh3.12775)
- Moukarzel S, Dyer RA, Garcia C, Wiedeman AM, Boyce G, Weinberg J, Keller BO, Elango R, Innis SM. 2018 Milk fat globule membrane supplementation in formula-fed rat pups improves reflex development and may alter brain lipid composition. *Sci. Rep.* **8**, 15277. (doi:10.1038/s41598-018-33603-8)
- Tochitani S. 2017 Functions of maternally-derived taurine in fetal and neonatal brain development. *Adv. Exp. Med. Biol.* **975 Pt 1**, 17–25. (doi:10.1007/978-94-024-1079-2_2)
- Schneider N, Hauser J, Oliveira M, Cazaubon E, Mottaz SC, O'Neill BV, Steiner P, Deoni SCL. 2019 Sphingomyelin in brain and cognitive development: preliminary data. *eNeuro* **6**, ENEURO.0421-18.2019. (doi:10.1523/ENEURO.0421-18.2019)
- Hart BL, Hart LA, Pinter-Wollman N. 2008 Large brains and cognition: where do elephants fit in? *Neurosci. Biobehav. Rev.* **32**, 86–98. (doi:10.1016/j.neubiorev.2007.05.012)
- Lee PC, Moss CJ. 1986 Early maternal investment in male and female African elephant calves. *Behav. Ecol. Sociobiol.* **18**, 353–361. (doi:10.1007/BF00299666/METRICS)
- Ortega J, Eggert L, Sukumar R. 2004 The living elephants: evolutionary ecology, behavior, and conservation. *J. Mammal.* **85**, 581–582. (doi:10.1644/1383960)
- Maya A, Olivier D. 2012 *Elephants: ecology, behavior and conservation*. New York, US: Nova Science Publishers Inc.
- Kobeni S, Osthoff G, Madende M, Hugo A, Marabini L. 2020 The dynamic changes of African elephant milk composition over lactation. *Animals (Basel)* **10**, 948. (doi:10.3390/ani10060948)

17. Dierenfeld ES, Han YAM, Mar KU, Aung A, Soe AT, Lummaa V, Lahdenperä M. 2020 Milk composition of Asian elephants (*Elephas maximus*) in a natural environment in Myanmar during late lactation. *Animals* **10**, 725. (doi:10.3390/ani10040725)
18. Ojo-Okunola A, Cacciatore S, Nicol MP, du Toit E. 2020 The determinants of the human milk metabolome and its role in infant health. *Metabolites* **10**, 77. (doi:10.3390/metabo10020077)
19. Pan J, Chen M, Li N, Han R, Yang Y, Zheng N, Zhao S, Zhang Y. 2023 Bioactive functions of lipids in the milk fat globule membrane: a comprehensive review. *Foods* **12**, 3755. (doi:10.3390/foods12203755)
20. Brink LR, Gueniot JP, Lönnerdal B. 2019 Effects of milk fat globule membrane and its various components on neurologic development in a postnatal growth restriction rat model. *J. Nutr. Biochem.* **69**, 163–171. (doi:10.1016/j.jnutbio.2019.03.013)
21. Nieto-Ruiz A *et al.* 2022 Infant formula supplemented with milk fat globule membrane, long-chain polyunsaturated fatty acids, and synbiotics is associated with neurocognitive function and brain structure of healthy children aged 6 years: the COGNIS Study. *Front. Nutr.* **9**, 820224. (doi:10.3389/fnut.2022.820224)
22. Ommati MM *et al.* 2024 Pre/postnatal taurine supplementation improves neurodevelopment and brain function in mice offspring: a persistent developmental study from puberty to maturity. *Life Sci.* **336**, 122284. (doi:10.1016/j.lfs.2023.122284)
23. Wharton BA, Morley R, Isaacs EB, Cole TJ, Lucas A. 2004 Low plasma taurine and later neurodevelopment. *Arch. Dis. Child. Fetal Neonatal Ed.* **89**, F497–8. (doi:10.1136/adc.2003.048389)
24. Aerts L, Van Assche FA. 2002 Taurine and taurine-deficiency in the perinatal period. *J. Perinat. Med.* **30**, 281–286. (doi:10.1515/JPM.2002.040)
25. Hinde K, Skibiell AL, Foster AB, Del Rosso L, Mendoza SP, Capitano JP. 2015 Cortisol in mother's milk across lactation reflects maternal life history and predicts infant temperament. *Behav. Ecol.* **26**, 269–281. (doi:10.1093/beheco/aru186)
26. Bagnell CA, Ho TY, George AF, Wiley AA, Miller DJ, Bartol FF. 2017 Maternal lactocrine programming of porcine reproductive tract development. *Mol. Reprod. Dev.* **84**, 957–968. (doi:10.1002/mrd.22815)
27. Bagnell CA, Bartol FF. 2019 Relaxin and the 'milky way': the lactocrine hypothesis and maternal programming of development. *Mol. Cell. Endocrinol.* **487**, 18–23. (doi:10.1016/j.mce.2019.01.003)
28. Takatsu Z, Tsuda M, Yamada A, Matsumoto H, Takai A, Takeda Y, Takase M. 2017 Elephant's breast milk contains large amounts of glucosamine. *J. Vet. Med. Sci.* **79**, 524–533. (doi:10.1292/jvms.16-0450)
29. Nofs SA, Atmar RL, Keitel WA, Hanlon C, Stanton JJ, Tan J, Flanagan JP, Howard L, Ling PD. 2013 Prenatal passive transfer of maternal immunity in Asian elephants (*Elephas maximus*). *Vet. Immunol. Immunopathol.* **153**, 308–311. (doi:10.1016/j.vetimm.2013.03.008)
30. Dhairykar M, Singh KP. 2020 Management of nutrition in captive Asian elephants. *Int. J. Vet. Sci. Anim. Hus.* **160**, 160–163.
31. Ward AM, Mccusker S, Tollefson T, Power ML. 2023 The nutrient profile of products available for hand rearing Asian elephants (*Elephas maximus*) (eds M Brooks, A Fidgett, E Kendrick, K Treiber). In *Proceedings of the Fifteenth Conference on Zoo and Wildlife Nutrition*. Zoo and Wildlife Nutrition Foundation and AZA Nutrition Advisory Group.
32. ElephantCare. 2024 Ch 4: feeding milk. Elephantcare.org. See <https://www.elephantcare.org/raisingorphanelephants/chapter-4-feeding-milk> (accessed 30 July 2024).
33. Muelbert M, Bloomfield FH, Pundir S, Harding JE, Pook C. 2020 Olfactory cues in infant feeds: volatile profiles of different milks fed to preterm infants. *Front. Nutr.* **7**, 603090. (doi:10.3389/fnut.2020.603090)
34. WWF. 2018 *The status of Asian elephants*. See <https://www.worldwildlife.org/magazine/issues/winter-2018/articles/the-status-of-asian-elephants> (accessed 11 March 2024).
35. Crawley JAH, Lahdenperä M, Min Oo Z, Htut W, Nandar H, Lummaa V. 2020 Taming age mortality in semi-captive Asian elephants. *Sci. Rep.* **10**, 1889. (doi:10.1038/s41598-020-58590-7)
36. MTE. 2021 Elephant. See <http://www.mte.com.mm/index.php/en/extraction-department/elephant> (accessed 22 January 2021).
37. Clubb R, Rowcliffe M, Lee P, Mar KU, Moss C, Mason GJ. 2008 Compromised survivorship in zoo elephants. *Science* **322**, 1649. (doi:10.1126/SCIENCE.1164298/SUPPL_FILE/CLUBB.SOM.PDF)
38. Mar KU, Lahdenperä M, Lummaa V. 2012 Causes and correlates of calf mortality in captive Asian elephants (*Elephas maximus*). *PLoS ONE* **7**, e32335. (doi:10.1371/journal.pone.0032335)
39. Lahdenperä M, Mar KU, Lummaa V. 2016 Short-term and delayed effects of mother death on calf mortality in Asian elephants. *Behav. Ecol.* **27**, 166–174. (doi:10.1093/beheco/arv136)
40. Takehana K, Kitani R, Hatate K, Onomi R, Yamagishi N. 2020 Anthropometric and blood data on a hand-reared captive Asian elephant (*Elephas maximus*) calf: a retrospective case report. *J. Vet. Med. Sci.* **82**, 943–947. (doi:10.1292/jvms.19-0666)
41. Kunz C, Rudloff S, Schad W, Braun D. 1999 Lactose-derived oligosaccharides in the milk of elephants: comparison with human milk. *Br. J. Nutr.* **82**, 391–399. (doi:10.1017/s0007114599001798)
42. Durham SD, Wei Z, Lemay DG, Lange MC, Barile D. 2023 Creation of a milk oligosaccharide database, MilkOligoDB, reveals common structural motifs and extensive diversity across mammals. *Sci. Rep.* **13**, 10345. (doi:10.1038/s41598-023-36866-y)
43. Osthoff G, Dickens L, Urashima T, Bonnet SL, Uemura Y, van der Westhuizen JH. 2008 Structural characterization of oligosaccharides in the milk of an African elephant (*Loxodonta africana africana*). *Comp. Biochem. Physiol. B Biochem. Mol. Biol.* **150**, 74–84. (doi:10.1016/j.cbpb.2008.01.010)
44. Abbondanza FN, Power ML, Dickson MA, Brown J, Oftedal OT. 2013 Variation in the composition of milk of Asian elephants (*Elephas maximus*) throughout lactation. *Zoo Biol.* **32**, 291–298. (doi:10.1002/zoo.21022)
45. Meehan CL, Mench JA, Carlstead K, Hogan JN. 2016 Determining connections between the daily lives of zoo elephants and their welfare: an epidemiological approach. *PLoS One* **11**, e0158124. (doi:10.1371/journal.pone.0158124)

46. Galante L, Lagström H, Vickers MH, Reynolds CM, Rautava S, Milan AM, Cameron-Smith D, Pundir S. 2020 Sexually dimorphic associations between maternal factors and human milk hormonal concentrations. *Nutrients* **12**, 152. (doi:10.3390/nu12010152)
47. Galante L, Reynolds CM, Milan AM, Alexander T, Bloomfield FH, Cameron-Smith D, Pundir S, Vickers MH, DIAMOND Study Group. 2021 Preterm human milk: associations between perinatal factors and hormone concentrations throughout lactation. *Pediatr. Res.* **89**, 1461–1469. (doi:10.1038/s41390-020-1069-1)
48. Miliku K *et al.* 2019 Human milk fatty acid composition is associated with dietary, genetic, sociodemographic, and environmental factors in the child cohort study. *Am. J. Clin. Nutr.* **110**, 1370–1383. (doi:10.1093/ajcn/nqz229)
49. Bautista CJ, Montaña S, Ramirez V, Morales A, Nathanielsz PW, Bobadilla NA, Zambrano E. 2016 Changes in milk composition in obese rats consuming a high-fat diet. *Br. J. Nutr.* **115**, 538–546. (doi:10.1017/S0007114515004547)
50. Purcell RH, Sun B, Pass LL, Power ML, Moran TH, Tamashiro K. 2011 Maternal stress and high-fat diet effect on maternal behavior, milk composition, and pup ingestive behavior. *Physiol. Behav.* **104**, 474–479. (doi:10.1016/j.physbeh.2011.05.012)
51. Ten-Doménech I, Ramos-García V, Piñeiro-Ramos JD, Gormaz M, Parra-Llorca A, Vento M, Kuligowski J, Quintás G. 2020 Current practice in untargeted human milk metabolomics. *Metabolites* **10**, 43. (doi:10.3390/metabo10020043)
52. Osthoff G, De Waal HO, Hugo A, de Wit M, Botes P. 2005 Milk composition of a free-ranging African elephant (*Loxodonta africana*) cow during early lactation. *Comp. Biochem. Physiol. A Mol. Integr. Physiol.* **141**, 223–229. (doi:10.1016/j.cbpb.2005.05.039)
53. Himschoot EA, Wenker ES, Reed EG, Sampson J, Power ML. 2021 Macronutrient composition of milk from two captive African elephant (*Loxodonta africana*) cows. *Zoo Biol.* **40**, 192–200. (doi:10.1002/zoo.21599)
54. Khin U, Myanm Ar Timber Enterprise Z. 1997 Utilization of elephants in timber harvesting in Myanmar. *Gajah* **17**, 9–22.
55. Lahdenperä M, Mar KU, Lummaa V. 2016 Nearby grandmother enhances calf survival and reproduction in Asian elephants. *Sci. Rep.* **6**, 27213. (doi:10.1038/srep27213)
56. Lynch EC, Lummaa V, Httut W, Lahdenperä M. 2019 Evolutionary significance of maternal kinship in a long-lived mammal. *Phil. Trans. R. Soc. B* **374**, 20180067. (doi:10.1098/rstb.2018.0067)
57. Newton-Tanzer E, Demmelmair H, Horak J, Holdt L, Koletzko B, Grote V. 2021 Acute metabolic response in adults to toddler milk formulas with alternating higher and lower protein and fat contents, a randomized cross-over trial. *Nutrients* **13**, 3022. (doi:10.3390/nu13093022)
58. Lindsay KL, Hellmuth C, Uhl O, Buss C, Wadhwa PD, Koletzko B, Entringer S. 2015 Longitudinal metabolomic profiling of amino acids and lipids across healthy pregnancy. *PLoS ONE* **10**, e0145794. (doi:10.1371/journal.pone.0145794)
59. Giesbertz P, Ecker J, Haag A, Spanier B, Daniel H. 2015 An LC-MS/MS method to quantify acylcarnitine species including isomeric and odd-numbered forms in plasma and tissues. *J. Lipid Res.* **56**, 2029–2039. (doi:10.1194/jlr.D061721)
60. Rauschert S, Uhl O, Koletzko B, Kirchberg F, Mori TA, Huang RC, Beilin LJ, Hellmuth C, Oddy WH. 2016 Lipidomics reveals associations of phospholipids with obesity and insulin resistance in young adults. *J. Clin. Endocrinol. Metab.* **101**, 871–879. (doi:10.1210/jc.2015-3525)
61. R Core Team. 2023 *R: a language and environment for statistical computing*. Vienna, Austria: R Foundation for Statistical Computing. See <https://www.r-project.org/>.
62. Stimming M, Mesch CM, Kersting M, Kalhoff H, Demmelmair H, Koletzko B, Schmidt A, Böhm V, Libuda L. 2014 Vitamin E content and estimated need in German infant and follow-on formulas with and without long-chain polyunsaturated fatty acids (LC-PUFA) enrichment. *J. Agric. Food Chem.* **62**, 10153–10161. (doi:10.1021/jf502469b)
63. Uemura Y, Asakuma S, Yon L, Saito T, Fukuda K, Arai I, Urashima T. 2006 Structural determination of the oligosaccharides in the milk of an Asian elephant (*Elephas maximus*). *Comp. Biochem. Physiol. A Mol. Integr. Physiol.* **145**, 468–478. (doi:10.1016/j.cbpa.2006.08.001)
64. McCullagh KG, Lincoln HG, Southgate DA. 1969 Fatty acid composition of milk fat of the African elephant. *Nature* **222**, 493–494. (doi:10.1038/222493a0)
65. Osthoff G, Wiese I, Deacon F. 2023 African elephant milk short saccharide and metabolite composition and their changes over lactation. *Animals (Basel)* **13**, 544. (doi:10.3390/ani13030544)
66. Koletzko B. 2018 Glutamate supply and metabolism in infants. *Ann. Nutr. Metab.* **73**(Suppl. 5), 29–35. (doi:10.1159/000494780)
67. Landi N, Ragucci S, Di Maro A. 2021 Amino acid composition of milk from cow, sheep and goat raised in Ailano and Valle Agricola, two localities of 'Alto Casertano' (Campania Region). *Foods* **10**, 2431. (doi:10.3390/foods10102431)
68. Lei J, Feng D, Zhang Y, Zhao FQ, Wu Z, Gabriel AS, Fujishima Y, Uneyama H, Wu G. 2011 Nutritional and regulatory role of branched-chain amino acids in lactation. *Front. Biosci.* **17**, 2725–2739. (doi:10.2741/4082/PDF)
69. Rezaei R, Wu Z, Hou Y, Bazer FW, Wu G. 2016 Amino acids and mammary gland development: nutritional implications for milk production and neonatal growth. *J. Anim. Sci. Biotechnol.* **7**, 20. (doi:10.1186/s40104-016-0078-8)
70. Wu G, Knabe DA. 1994 Free and protein-bound amino acids in sow's colostrum and milk. *J. Nutr.* **124**, 415–424. (doi:10.1093/jn/124.3.415)
71. Wang W, Wu Z, Dai Z, Yang Y, Wang J, Wu G. 2013 Glycine metabolism in animals and humans: implications for nutrition and health. *Amino Acids* **45**, 463–477. (doi:10.1007/s00726-013-1493-1)
72. McCarty MF, O'Keefe JH, DiNicolantonio JJ. 2018 Dietary glycine is rate-limiting for glutathione synthesis and may have broad potential for health protection. *Ochsner J.* **18**, 81–87. (doi:10.1043/T0J-17-0022)
73. Brosnan JT, Brosnan ME. 2013 Glutamate: a truly functional amino acid. *Amino Acids* **45**, 413–418. (doi:10.1007/s00726-012-1280-4)
74. Petroff OAC. 2002 GABA and glutamate in the human brain. *Neuroscientist* **8**, 562–573. (doi:10.1177/1073858402238515)
75. Salceda R. 2022 Glycine neurotransmission: its role in development. *Front. Neurosci.* **16**, 947563. (doi:10.3389/fnins.2022.947563)
76. Onaolapo AY, Onaolapo OJ. 2020 Dietary glutamate and the brain: in the footprints of a Jekyll and Hyde molecule. *Neurotoxicology* **80**, 93–104. (doi:10.1016/j.neuro.2020.07.001)

77. George AD, Gay MCL, Murray K, Muhlhausler BS, Wlodek ME, Geddes DT. 2020 Human milk sampling protocols affect estimation of infant lipid intake. *J. Nutr.* **150**, 2924–2930. (doi:10.1093/jn/nxaa246)
78. Atwood CS, Hartmann PE. 1992 Collection of fore and hind milk from the sow and the changes in milk composition during suckling. *J. Dairy Res.* **59**, 287–298. (doi:10.1017/s0022029900030569)
79. Pietrzak-Fiećko R, Kamelska-Sadowska AM. 2020 The comparison of nutritional value of human milk with other mammals' milk. *Nutrients* **12**, 1404. (doi:10.3390/nu12051404)
80. Shekhar N, Tyagi S, Rani S, Thakur AK. 2023 Potential of capric acid in neurological disorders: an overview. *Neurochem. Res.* **48**, 697–712. (doi:10.1007/s11064-022-03809-4)
81. Lee SI, Kang KS. 2017 Function of capric acid in cyclophosphamide-induced intestinal inflammation, oxidative stress, and barrier function in pigs. *Sci. Rep.* **7**, 16530. (doi:10.1038/s41598-017-16561-5)
82. Gaje LJ. 2008 Neonatal elephant mortality. In *Zoo and wild animal medicine (sixth edition)* (eds E Murray, R Fowler, E Miller), pp. 365–368. Exeter, UK: Elsevier Health Sciences. (doi:10.1016/B978-141604047-7.50047-6)
83. Dambrova M *et al.* 2022 Acylcarnitines: nomenclature, biomarkers, therapeutic potential, drug targets, and clinical trials. *Pharmacol. Rev.* **74**, 506–551. (doi:10.1124/pharmrev.121.000408)
84. Servillo L, D'Onofrio N, Neglia G, Casale R, Cautela D, Marrelli M, Limone A, Campanile G, Balestrieri ML. 2018 Carnitine precursors and short-chain acylcarnitines in water buffalo milk. *J. Agric. Food Chem.* **66**, 8142–8149. (doi:10.1021/ACS.JAFC.8B02963/ASSET/IMAGES/LARGE/JF-2018-02963P_0005.JPEG)
85. Penn D, Dolderer M, Schmidt-Sommerfeld E. 1987 Carnitine concentrations in the milk of different species and infant formulas. *Biol. Neonate* **52**, 70–79. (doi:10.1159/000242686)
86. Crill CM, Helms RA. 2007 The use of carnitine in pediatric nutrition. *Nutr. Clin. Pract.* **22**, 204–213. (doi:10.1177/0115426507022002204)
87. Sachan DS, Smith RB, Plattsmier J, Lorch V. 1989 Maternal, cord, and neonatal carnitine correlations and lipid profiles of various birthweight infants. *Am. J. Perinatol.* **6**, 14–17. (doi:10.1055/s-2007-999535)
88. Shennan DB, Peaker M. 2000 Transport of milk constituents by the mammary gland. *Physiol. Rev.* **80**, 925–951. (doi:10.1152/PHYSREV.2000.80.3.925/ASSET/IMAGES/LARGE/9J0300078006.JPEG)
89. Zeisel SH, Char D, Sheard NF. 1986 Choline, phosphatidylcholine and sphingomyelin in human and bovine milk and infant formulas. *J. Nutr.* **116**, 50–58. (doi:10.1093/jn/116.1.50)
90. Ueno HM, MacKenzie A, Scott D, Higurashi S, Toba Y, Kobayashi T. 2021 Milk phospholipid profiling among Japanese women with differing docosahexaenoic acid levels. *JPGN Rep.* **2**, e058. (doi:10.1097/PG9.000000000000058)
91. Liu Q *et al.* 2022 Study on the characteristics of glycerides and phospholipids in human milk from Tibet. *Food Res. Int.* **157**, 111025. (doi:10.1016/j.foodres.2022.111025)
92. Contarini G, Povolò M. 2013 Phospholipids in milk fat: composition, biological and technological significance, and analytical strategies. *Int. J. Mol. Sci.* **14**, 2808–2831. (doi:10.3390/ijms14022808)
93. Wei W, Li D, Jiang C, Zhang X, Zhang X, Jin Q, Zhang X, Wang X. 2022 Phospholipid composition and fat globule structure II: comparison of mammalian milk from five different species. *Food Chem.* **388**, 132939. (doi:10.1016/j.foodchem.2022.132939)
94. Liu H, Radlowski EC, Conrad MS, Li Y, Dilger RN, Johnson RW. 2014 Early supplementation of phospholipids and gangliosides affects brain and cognitive development in neonatal piglets. *J. Nutr.* **144**, 1903–1909. (doi:10.3945/jn.114.199828)
95. Smoczyński M. 2017 Role of phospholipid flux during milk secretion in the mammary gland. *J. Mammary Gland Biol. Neoplasia* **22**, 117–129. (doi:10.1007/S10911-017-9376-9/FIGURES/4)
96. Salim M, MacGibbon AKH, Nowell CJ, Clulow AJ, Boyd BJ. 2023 Influence of casein and milk phospholipid emulsifiers on the digestion and self-assembled structures of milk lipids. *Colloids Interfaces* **7**, 56. (doi:10.3390/COLLOIDS7030056/51)
97. Rabinowitz JD, Enerbäck S. 2020 Lactate: the ugly duckling of energy metabolism. *Nat. Metab.* **2**, 566–571. (doi:10.1038/s42255-020-0243-4)
98. Gray LR, Tompkins SC, Taylor EB. 2014 Regulation of pyruvate metabolism and human disease. *Cell. Mol. Life Sci.* **71**, 2577–2604. (doi:10.1007/s00018-013-1539-2)
99. Martínez-Reyes I, Chandel NS. 2020 Mitochondrial TCA cycle metabolites control physiology and disease. *Nat. Commun.* **11**. (doi:10.1038/s41467-019-13668-3)
100. Sun HZ, Shi K, Wu XH, Xue MY, Wei ZH, Liu JX, Liu HY. 2017 Lactation-related metabolic mechanism investigated based on mammary gland metabolomics and 4 biofluids' metabolomics relationships in dairy cows. *BMC Genomics* **18**. (doi:10.1186/s12864-017-4314-1)
101. Pedersen MGB, Søndergaard E, Nielsen CB, Johannsen M, Gormsen LC, Møller N, Jessen N, Rittig N. 2022 Oral lactate slows gastric emptying and suppresses appetite in young males. *Clin. Nutr.* **41**, 517–525. (doi:10.1016/j.clnu.2021.12.032)
102. Takahashi K, Kitaoka Y, Yamamoto K, Matsunaga Y, Hatta H. 2020 Oral lactate administration additionally enhances endurance training-induced increase in cytochrome C oxidase activity in mouse soleus muscle. *Nutrients* **12**, 770. (doi:10.3390/nu12030770)
103. De Vadder F, Kovatcheva-Datchary P, Zitoun C, Duchamp A, Bäckhed F, Mithieux G. 2016 Microbiota-produced succinate improves glucose homeostasis via intestinal gluconeogenesis. *Cell Metab.* **24**, 151–157. (doi:10.1016/j.cmet.2016.06.013)
104. Kim ES, Kim JS, Cho KH, Lee KH, Tamari Y. 1998 Quantitation of taurine and selenium levels in human milk and estimated intake of taurine by breast-fed infants during the early periods of lactation. *Adv. Exp. Med. Biol.* **442**, 477–486. (doi:10.1007/978-1-4899-0117-0_57)
105. Tochitani S. 2022 Taurine: a maternally derived nutrient linking mother and offspring. *Metabolites* **12**, 228. (doi:10.3390/metabo12030228)
106. Nishigawa T, Nagamachi S, Ikeda H, Chowdhury VS, Furuse M. 2018 Restraint stress in lactating mice alters the levels of sulfur-containing amino acids in milk. *J. Vet. Med. Sci.* **80**, 503–509. (doi:10.1292/jvms.17-0661)

107. Hayes KC, Stephan ZF, Sturman JA. 1980 Growth depression in taurine-depleted infant monkeys. *J. Nutr.* **110**, 2058–2064. (doi:[10.1093/jn/110.10.2058](https://doi.org/10.1093/jn/110.10.2058))
108. Cattaneo L, Piccioli-Cappelli F, Minuti A, Trevisi E. 2023 Metabolic and physiological adaptations to first and second lactation in Holstein dairy cows. *J. Dairy Sci.* **106**, 3559–3575. (doi:[10.3168/jds.2022-22684](https://doi.org/10.3168/jds.2022-22684))
109. Hinde K, Foster AB, Landis LM, Rendina D, Oftedal OT, Power ML. 2013 Daughter dearest: sex-biased calcium in mother's milk among rhesus macaques. *Am. J. Phys. Anthropol.* **151**, 144–150. (doi:[10.1002/ajpa.22229](https://doi.org/10.1002/ajpa.22229))
110. Galante L, Franco dos Santos, DJ, Mikkonen E, Horak J, Stijepic Z, Demmelmair H *et al.* 2024. Data from: Milk metabolite composition of a semi-captive population of Asian Elephants. Figshare. (doi:[10.6084/m9.figshare.c.7514872](https://doi.org/10.6084/m9.figshare.c.7514872))