

Long-term Outcomes of Tibial Spine Avulsion Fractures After Open Reduction With Osteosuturing Versus Arthroscopic Screw Fixation

A Multicenter Comparative Study

Maija Jääskelä,* MD, Marco Turati,^{†‡§} MD, Lasse Lempainen,^{§||¶} MD, PhD, Nicolas Bremond,^{#**} MD, Aurelien Courvoisier,^{#**} MD, Prof., Antoine Henri,^{††} MD, PhD, Franck Accadbled,^{‡‡} MD, PhD, Prof., and Jaakko Sinikumpu,^{*§§|||} MD, PhD, Prof.

Investigation performed at Oulu University Hospital, Oulu, Finland; Hospital Couple Enfant, Grenoble Alpes University, Grenoble, France; Hôpital des Enfants, Centre Hospitalier Universitaire de Toulouse, Toulouse, France; and Fondazione IRCCS San Gerardo dei Tintori, Monza, Italy

Background: More information is needed regarding return to preinjury sport levels and patient-reported outcomes after tibial spine avulsion (TSA) fracture, which is most common in children aged 8 to 12 years.

Purpose: To analyze return to play/sport (RTP), subjective knee-specific recovery, and quality of life in patients after TSA fracture treated with open reduction with osteosuturing versus arthroscopic reduction with internal screw fixation.

Study Design: Cohort study; Level of evidence, 3.

Methods: This study included 61 patients <16 years old with TSA fracture treated via open reduction with osteosuturing (n = 32) or arthroscopic reduction with screw fixation (n = 29) at 4 institutions between 2000 and 2018; all patients had at least 24 months of follow-up (mean ± SD, 87.0 ± 47.1 months; range, 24-189 months). The patients completed questionnaires regarding ability to return to preinjury-level sports, subjective knee-specific recovery, and health-related quality of life, and results were compared between treatment groups. Univariate and multivariate logistic regression analyses were conducted to determine variables associated with failure to return to preinjury level of sport.

Results: The mean patient age was 11 years, with a slight male predominance (57%). Open reduction with osteosuturing was associated with a quicker RTP time than arthroscopy with screw implantation (median, 8.0 vs 21.0 weeks; $P < .001$). Open reduction with osteosuturing was also associated with a lower risk of failure to RTP at preinjury level (adjusted odds ratio, 6.4; 95% CI, 1.1-36.0; $P = .035$). Postoperative displacement >3 mm increased the risk of failure to RTP at preinjury level regardless of treatment group (adjusted odds ratio, 15.2; 95% CI, 1.2-194.9; $P = .037$). There was no difference in knee-specific recovery or quality of life between the treatment groups.

Conclusion: Open surgery with osteosuturing was a more viable option for treating TSA fractures because it resulted in a quicker RTP time and a lower rate of failure to RTP as compared with arthroscopic screw fixation. Precise reduction contributed to improved RTP.

Keywords: children and adolescents; tibial spine fracture; knee ligaments; treatment methods; pediatric sport medicine; general sports trauma

A tibial spine avulsion (TSA) fracture is often referred to as the pediatric equivalent of an anterior cruciate ligament

(ACL) rupture in adults. It is most common in children aged 8 to 12 years.⁸ These injuries occur at an estimated frequency of 3 per 100,000 people.¹⁸ The incompletely ossified tibial eminence in children is biomechanically weaker than the native ACL fibers; hence, injury to the knee results in a bony avulsion fracture instead of a midsubstance ACL

The Orthopaedic Journal of Sports Medicine, 11(6), 23259671231176991

DOI: 10.1177/23259671231176991

© The Author(s) 2023

This article is distributed under the terms of the Creative Commons Attribution 4.0 License (<https://creativecommons.org/licenses/by/4.0/>) which permits any use, reproduction and distribution of the work without further permission provided the original work is attributed as specified on the SAGE and Open Access pages (<https://us.sagepub.com/en-us/nam/open-access-at-sage>).

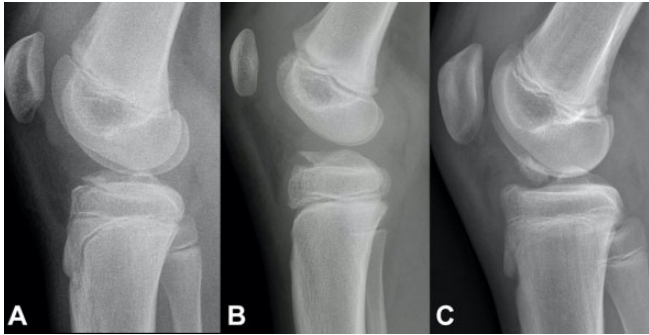


Figure 1. Modified Meyers and McKeever classification. (A) Type 1: nondisplaced (<3 mm). (B) Type 2: minimally displaced with intact posterior hinge. (C) Type 3: completely displaced with or without rotation.

rupture.¹⁹ ACL avulsion in children is typically an isolated injury and has a low trauma energy level.¹⁴

The most common incidents behind TSA fractures are falls from bicycles, motor vehicle accidents, and sports incidents such as skiing and football.^{3,16,35} The severity of the injury usually determines the treatment; however, there is no fully agreed-on recommended treatment. The most often used scheme for categorizing TSA fractures is the Meyers and McKeever classification^{21,32}:

- Type 1 represents nondisplaced or minimally displaced fractures, which are treated without surgery.
- Type 2 is a partially displaced fracture, and its management remains controversial.^{4,9,13,16,35}
- Type 3 indicates a completely displaced fracture that requires reduction and fixation (Figure 1).^{6,7,13,25,37}

Traditionally, open reduction with suture fixation has been performed via a knee arthrotomy. Owing to advances in knee arthroscopy, many experts prefer treating TSA fractures by performing arthroscopic reduction with internal screw fixation instead of open surgery. In comparison with osteosuturing, the screws used in screw fixation provide a more rigid fixation. However, there is no need for future hardware removal after osteosuturing. There is no

consensus in the clinical or biomechanical literature to favor either suture or screw fixation in skeletally immature patients.^{5,20,29} The extant literature on the subject is heterogeneous.^{5,9,11,25,29} Ultimately, evidence for the superiority of arthroscopic fixation over open reduction with fixation has been insufficient.^{5,9}

Anterior instability, which is thought to be due to traumatic elongation of the ligament rather than inadequate fixation, is one of the most frequently reported long-term findings after a TSA fracture.^{1,15,34} Malunion, nonunion, growth disturbance, pain, decreased range of motion, and arthrofibrosis, in particular, have also been confirmed as long-term sequelae.^{6,7,15,33-35} However, return to play/sport (RTP) and subjective patient-related outcomes over the long term are not widely understood.^{1,17,34}

In this study, we analyzed time to preinjury-level RTP and subjective outcomes in children and adolescents who were treated for TSA fractures as a function of the treatment method: open reduction with osteosuturing versus arthroscopic reduction with internal screw fixation.

METHODS

Ethics committee approval for the study protocol was provided from the primary study center, and institutional approval was provided from every affiliated institution according to the local regulation. All study participants provided informed consent. This multicenter observational case-control study by an international research group (the European Paediatric Orthopaedic Society Sports Group; active members include M.T., F.A., and J.S.) was conducted at 4 European institutions. We queried the institutional databases for patients who had been treated for a TSA fracture via open osteosuturing or arthroscopic screw fixation at any of the 4 study centers between 2000 and 2018. Patients <16 years old at the time of injury who had a minimum 24 months of follow-up at the time of data collection (June 2020) were initially selected to participate in the study. The hospital journals and radiographs of the preliminary selected patients were reviewed to confirm their diagnosis and eligibility. The injury mechanism, fracture grade based on the Meyers and McKeever classification

^{|||}Address correspondence to Jaakko Sinikumpu, MD, PhD, Prof., Department of Pediatric Orthopaedics and Surgery, Oulu University Hospital, PO Box 10, 90029 OYS, Oulu, Finland (email: juha-jaakko.sinikumpu@pohde.fi).

^{*}Department of Pediatric Orthopaedics and Surgery, Oulu University Hospital; Research Unit of Clinical Medicine, University of Oulu; and Medical Research Center, Oulu, Finland.

[†]Orthopedic Department, Fondazione IRCCS San Gerardo dei Tintori, Monza, Italy.

[‡]Department of Medicine and Surgery, University of Milano-Bicocca, Monza, Italy.

[§]Ripoll y De Prado FIFA Medical Centre of Excellence, Madrid, Spain.

^{||}FinnOrthopaedics/Hospital Pihlajalinna, Turku, Finland.

[¶]Department of Physical Activity and Health, Paavo Nurmi Centre, University of Turku, Turku, Finland.

[#]Transalpine Center of Pediatric Sports Medicine and Surgery, University of Milano-Bicocca, Monza, Italy.

^{**}Department of Paediatric Orthopaedic Surgery, Hôpital Couple Enfant, Grenoble Alpes University, Grenoble, France.

^{††}Unité de Médecine du Sport, Centre Hospitalier Francois Mitterand de Pau, Pau, France.

^{‡‡}Department of Orthopaedic Surgery, Hôpital des Enfants, Centre Hospitalier Universitaire de Toulouse, Toulouse, France.

^{§§}Hospital Terveystalo, Oulu, Finland.

Final revision submitted January 13, 2023; accepted February 22, 2023.

The authors have declared that there are no conflicts of interest in the authorship and publication of this contribution. AOSSM checks author disclosures against the Open Payments Database (OPD). AOSSM has not conducted an independent investigation on the OPD and disclaims any liability or responsibility relating thereto.

Ethical approval for this study was obtained from Northern Ostrobothnia Hospital District (§295/80/2019).

system, pre- and postoperative displacement, treatment method details, and the number of follow-up visits were determined.

During the study period, 173 patients with a TSA fracture were treated operatively or nonoperatively at 1 of the 4 study institutions. Of these patients, 116 met the preliminary inclusion criteria for this study. The exclusion criteria were previous ACL injury and/or reconstruction, an infectious antecedent, connective tissue disorders, or rheumatologic diseases, but there was no such patient. Patients with a subsequent severe injury to the same lower extremity with the TSA fracture—any injury requiring surgical treatment was considered severe—were also excluded. There was only 1 patient who sustained a severe lower-leg fracture within 24 months of sustaining the tibial spine injury and was thus excluded.

Outcome Measures

A survey was mailed to the included patients between August and December 2020. This survey included patient-reported outcome instruments for knee-specific recovery and health-related quality of life, as well as questions regarding RTP ability. Patients who did not return the survey were contacted 2 more times during data collection (August-December 2020).

The patient-reported outcome instrument was selected according to the age of the patient at the time of follow-up (not at the time of injury). Knee-specific recovery was measured using the International Knee Documentation Committee (IKDC) Subjective Knee Form (scored from 0 to 100, with higher scores indicating higher levels of function).^{12,17} To determine satisfactory knee recovery, the age- and sex-matched normative data for the IKDC 2000 for men and women with no current or past knee problem were used as cutoff scores: 95.5 for men and 93.4 for women aged 18 to 24 years and 94.6 for men and 92.5 for women aged 25 to 34 years.² Patients <18 years old completed the pediatric version of the IKDC (Pedi-IKDC), and the published median value of 94.6 for patients aged 10 to 18 years²⁴ was used as the cutoff score for determining adequate versus impaired knee-specific recovery. Health-related quality of life was measured using the EuroQol 5-level EQ-5D (EQ-5D-5L) for patients >18 years old and the youth EQ-5D (EQ-5D-Y) for patients <18 years old.^{10,36} In part 1, patients choose responses from among 5 levels for the EQ-5D-5L (*no problems to extreme problems*) or from among 3 levels for the EQ-5D-Y (*no problems to a lot of problems*) in response to 5 categories: mobility, self-care, usual activities, pain/discomfort, and anxiety/depression. Impaired quality of life was determined as any problem (level ≥ 2) in any of the 5 categories. In part 2, patients record their health on the day of the survey on a visual analog scale (0 = worst, 100 = best).

The primary outcome variable was the ability to return to preinjury-level sport after sustaining the TSA fracture. Patients were asked about their preinjury sport levels: whether they were able to return to the same level at any time after the injury and, if not, whether they were able to return to a lower level of that sport. If a patient did not

return to the same level, he or she was asked to provide the reason.

Statistical Analysis

Outcomes were compared between patients who underwent open osteosuturing and those who had arthroscopic screw fixation. Descriptive statistics are presented as means, ranges, and standard deviations for normally distributed continuous variables as appropriate. Normality of the data set was investigated using the Shapiro-Wilk test. Mean values were compared with the *t* test; nonnormally distributed variables are reported as medians and were compared via the Mann-Whitney *U* test. Dichotomous variables are presented as frequencies and proportions. Differences between the proportions of the variables were analyzed using the standardized nominator deviation test, and the distribution of the variables was analyzed via the chi-square test or Fisher exact test for small sample sizes ($n < 5$).

The risk of impaired outcomes was analyzed through logistic regression analysis, with crude and adjusted odds ratios (ORs) presented. Given our expertise, we deduced before study initiation that the following would be associated with the risk of unsatisfactory outcomes (ie, failure to return to preinjury-level sport): older age, male sex, displacement >5 mm, postoperative displacement >3 mm, associated injuries at the time of TSA fracture, osteosutures as compared with screw fixation, and the need for reoperation during the follow-up. Therefore, regardless of whether results were significant in the univariate analysis (crude values), these potentially important variables were included in the multivariate logistic regression analysis. The threshold of statistical significance was $P < .05$, and we required that all analyses be 2-tailed and that 95% confidence intervals be used wherever possible. The statistical analyses were performed with SPSS Version 27.0 (IBM Corp) and StatsDirect Version 3.0 (StatsDirect Ltd).

RESULTS

Patient Characteristics and Injury Types

Of the 116 initial study participants, 54 did not return the completed questionnaires. Thus, the final number of study participants was 61 (53% of the 116 who were treated via open reduction with osteosuture fixation or arthroscopic reduction with screw fixation). The mean \pm SD follow-up time was 87.0 ± 47.1 months (range, 24-189 months).

Most of the study patients were male ($n = 35$; 57.4%). The mean age was 11.2 ± 2.6 years (range, 5.25-15.5 years): 11.9 ± 2.4 years for boys and 10.4 ± 2.5 years for girls at the time of injury. The predominant reasons for the sports-related TSA fractures were ski falls (57.4%), followed by bicycle or motorbike accidents (19.7%) and ball game-related accidents (13.1%). Two parameters were higher among patients who had open surgery than among those who underwent arthroscopy: preoperative displacement

TABLE 1
Characteristics of the Study Patients Overall and by Study Group^a

	Overall (N = 61)	Open Osteosuture (n = 32)	Arthroscopic Screw (n = 29)	Difference (95% CI)	P ^b
Age, y	11.2 ± 2.6	10.9 ± 2.7	11.5 ± 2.3	0.6 (-0.7 to 1.9)	.371
Follow-up, mo	87.0 ± 47.1	101.4 ± 51.9	71.0 ± 35.6	30.4 (7.7 to 53.0)	.010
Sex					
Female	26 (42.6)	14 (43.8)	12 (41.4)	2.4 (-22.2 to 26.5)	>.999
Male	35 (57.4)	18 (56.2)	17 (58.6)		
Sport when injured					
Skiing	35 (57.4)	23 (71.9)	12 (41.4)	30.5 (5.5 to 52.1)	.013
Bicycle/motorbike	12 (19.7)	7 (21.9)	5 (17.2)	4.7 (-16.3 to 24.9)	.548
Ball games	8 (13.1)	2 (6.2)	6 (20.7)	14.4 (-3.0 to 33.4)	.079
Other	6 (9.8)	0 (0)	6 (20.7)	20.7 (8.7 to 38.6)	.004
Injury side					
Left	33 (54.1)	13 (40.6)	15 (51.7)	11.1 (-13.9 to 34.8)	.325
Right	28 (45.9)	19 (59.4)	14 (48.3)		
TSA fracture grade ^c					
Type 1	1 (1.6)	0 (0)	1 (3.4)	3.4 (-7.6 to 17.3)	.237
Type 2	26 (42.6)	12 (37.5)	14 (48.3)	10.8 (-14.0 to 34.4)	.324
Type 3	34 (55.7)	20 (62.5)	14 (48.3)	14.2 (-10.8 to 37.6)	.218
Preoperative imaging					
Radiograph	61 (100)	32 (100)	29 (100)	NA	NA
CT	15 (24.6)	7 (21.9)	8 (27.6)	5.7 (-16.1 to 27.7)	.570
MRI	7 (11.5)	6 (18.8)	1 (3.5)	15.3 (-1.1 to 32.7)	.315
Displacement, mm					
Pretreatment	6.7 ± 3.5	7.9 ± 3.3	5.4 ± 3.4	2.5 (0.6 to 4.3)	.009
Posttreatment	0.9 ± 1.3	1.3 ± 1.5	0.5 ± 0.8	0.8 (0.2 to 1.4)	.012
Concomitant injuries	9 (14.8)	6 (18.8)	3 (9.4)	8.4 (-10.7 to 27.1)	.315

^aData are reported as mean ± SD or No. (%) of patients unless otherwise indicated. CT, computed tomography; MRI, magnetic resonance imaging; NA, not applicable; TSA, tibial spine avulsion.

^bBold *P* values indicate statistically significant difference between study groups (*P* < .05). Standardized nominator deviation test used for proportions; *t* test used for means.

^cAccording to Meyers and McKeever classification.²¹

(7.9 vs 5.4 mm; *P* = .009) and postoperative displacement (1.3 vs 0.5 mm; *P* = .012) (Table 1).

Displacement and Primary Treatment

One injury (1.6%) was classified as type 1, 26 (42.6%) as type 2, and 34 (55.7%) as type 3. One patient with a grade 1 injury was treated operatively for a related hip fracture. There were concomitant injuries in 9 (14.8%) cases, and 3 of them had >1 concomitant injury. The majority of these concomitant injuries (n = 11; 84.6%) were treated operatively. In total, there were 2 medial and 3 lateral meniscal tears, 3 cartilage injuries to the femur or tibiae, 2 tibial lateral condyle fractures, 1 medial collateral ligament tear, 1 hip fracture, and 1 clavicle fracture. Primary magnetic resonance imaging was performed for 7 (11.5%) patients: significantly more for patients undergoing the open method (18.8%) than arthroscopic treatment (3.5%) (Table 1).

Return to Preinjury Level of Sport

RTP at the preinjury level was achieved by a majority of the patients (n = 46; 75.4%). However, 6 patients were unable to return to their sports at all: 3 experienced pain, 1 had restricted movement, and 2 were encumbered by

pain and restricted motion. At the time of the final follow-up (24-189 months after injury), 9 patients were able to return to their preinjury sports at a lower level. Their reported reasons were fear (n = 4), pain (n = 4), and instability (n = 2).

There was no difference in RTP rate between the 29 patients (90.6%) who underwent open reduction with osteosuturing and the 26 (89.7%) who underwent arthroscopic screw fixation (*P* = .899). Neither was there any difference in preinjury-level RTP rate between the 26 patients (81.2%) who had open surgery and the 20 (69.0%) who were treated arthroscopically (*P* = .255).

The mean period of immobilization was 4.5 ± 0.7 weeks for both study groups, and the median ± SD time to full RTP was 13.0 ± 33.0 weeks after injury for the entire study population. Patients treated via arthroscopy with screw fixation took a longer time to RTP than those treated via open surgery (median ± SD, 21.0 ± 43.4 vs 8.0 ± 2.7 weeks; *P* < .001). Patients treated arthroscopically visited out-hospital clinics more frequently during follow-up than those who underwent open surgery (mean ± SD, 4.0 ± 2.4 vs 1.9 ± 1.1; *P* < .001) (Table 2).

Regression analyses indicated that the following were associated with a higher risk of failure to RTP at the preinjury level: arthroscopic screw fixation (adjusted OR, 6.4; 95% CI, 1.1-36.0; *P* = .035) and postoperative

TABLE 2
Treatment Details and Outcomes Overall and by Study Group^a

	Overall (N = 61)	Open Osteosuture (n = 32)	Arthroscopic Screw (n = 29)	Difference (95% CI)	P ^b
Primary fixation approach	NA	32 (52.5)	29 (47.5)	5 (-12.8 to 22.3)	.593
Immobilization time, wk	4.5 ± 0.7	4.5 ± 0.6	4.5 ± 0.7	NA	NA
No. of follow-up visits	2.9 ± 2.1	1.9 ± 1.1	4 ± 2.4	2.1 (1.1 to 3.1)	<.001
Reoperation by primary fixation	9 (14.8)	3 (9.4)	6 (20.7)	11.3 (-7.2 to 30.8)	.470
Time to return to sport, wk	13.0 ± 33.0	8.0 [8-12] ^c	21.0 [12-36.3] ^c	13.0 ^d	<.001
Return to sport					
At preinjury level	46 (75.4)	26 (81.2)	20 (69.0)	12.2 (-9.7 to 33.9)	.255
At a lower level	9 (14.8)	3 (9.4)	6 (20.7)	11.3 (-7.2 to 30.8)	.180
Unable to return	6 (9.8)	3 (9.4)	3 (10.3)	0.9 (-18.7 to 15.8)	>.999
Knee-specific recovery: IKDC/Pedi-IKDC (max: 100)	90.9 ± 12.7	93.1 ± 13.5	90.4 ± 14.5	2.7 (-4.6 to 9.9)	.467
Health-related quality of life: EQ-5D-5L/EQ-5D-Y ^e					
VAS of health today (max: 100)	88.4 ± 11.3	85.4 ± 13.4	89.4 ± 10.5	4.0 (-2.2 to 10.1)	.200
Mobility					
No problems (level 1)	54 (88.5)	30 (93.8)	24 (82.8)	11.0 (-5.9 to 29.5)	.144
Any problems (level ≥2)	7 (11.5)	2 (6.2)	5 (17.2)		
Self-care					
No problems (level 1)	60 (98.4)	32 (100)	28 (96.6)	3.4 (-7.6 to 17.3)	.238
Any problems (level ≥2)	1 (1.6)	0 (0)	1 (3.4)		
Usual activities					
No problems (level 1)	54 (88.5)	31 (96.9)	23 (79.3)	17.6 (1.7 to 36.9)	.025
Any problems (level ≥2)	7 (11.5)	1 (3.1)	6 (20.7)		
Pain/discomfort					
No problems (level 1)	40 (65.6)	24 (75.0)	17 (58.6)	16.4 (-7.4 to 38.9)	.187
Any problems (level ≥2)	21 (34.4)	8 (15.0)	12 (41.4)		
Anxiety/depression					
No problems (level 1)	50 (82.0)	28 (87.5)	22 (75.9)	11.6 (-8.2 to 32.0)	.238
Any problems (level ≥2)	11 (18.0)	4 (12.5)	7 (24.1)		
Overall score					
No problems (level 1)	35 (57.4)	22 (68.8)	13 (44.8)	24 (-1.1 to 46.3)	.059
Any problems (level ≥2)	26 (42.6)	10 (32.2)	16 (55.2)		

^aData are reported as mean ± SD or No. (%) unless otherwise indicated. IKDC, International Knee Documentation Committee; EQ-5D-5L/Y, Euroqol 5 level Health-related questionnaire 5L for >18 years old, Y for <18 years old; IQR, interquartile range; max, maximum; NA, not applicable; Pedi-IKDC, pediatric version (<18 years old) of International Knee Documentation Committee (IKDC) subjective Knee Form; VAS, visual analog scale.

^bBold *P* values indicate statistically significant difference between study groups (*P* < .05). Standardized nominate deviation test used for proportions; *t* test used for means; and Mann-Whitney *U* test used for nonnormally distributed values (median and IQR).

^cMedian [IQR].

^d95% CI not applicable for the difference of medians.

^eEQ-5D-5L levels: 1, no problems; 2, slight problems; 3, moderate problems; 4, severe problems; 5, extreme problems/unable to do. EQ-5D-Y levels: 1, no problems; 2, some problems; 3, a lot of problems.

displacement >3 mm (adjusted OR, 15.2; 95% CI, 1.2-194.9; *P* = .037). Preoperative displacement, associated injuries, reoperation, sex, and age showed no correlation with an increased or decreased risk of ending a sports career (Table 3).

Subjective Satisfaction and Quality of Life

The mean IKDC/Pedi-IKDC score was 90.9 ± 12.7, with no significant differences between the open osteosuturing group and the arthroscopic screw fixation group (93.1 ± 13.5 vs 90.4 ± 14.5; *P* = .467). At final follow-up, there was no statistically significant difference in subjective overall health-related quality of life between the open osteosuturing and arthroscopic screw fixation groups (85.4 ± 13.4 vs 89.4 ± 10.5; *P* = .200).

Patients who needed reoperation had a 19-fold risk of reporting unsatisfactory outcomes on the IKDC (adjusted OR, 19.0; 95% CI, 1.8-203.0; *P* = .015) (Tables 2 and 4).

Reoperation

Nine patients (14.8%) required a secondary operation. One patient treated primarily via open osteosuturing sustained a comminuted fracture and required ACL reconstruction at the later stage of the study. Two patients who were treated via the open technique with osteosutures had impaired range of motion after the primary operation, which was not resolved via training or physical therapy. One of these 2 patients underwent manipulation while under general anesthesia, and the other was operated on after arthroscopic removal of adhesions and then underwent manipulation. Of 6 patients

who were treated primarily via arthroscopic screw fixation and needed reoperation, 3 experienced postoperative pain. Removal of the screws resolved these symptoms. Two patients, treated primarily via arthroscopic fixation, presented with instability, necessitating ACL reconstruction. One patient experienced a fracture displacement despite the initial arthroscopic screw fixation, and subsequent screw fixation was performed (Table 2).

DISCUSSION

The main finding of this comprehensive multicenter study was that satisfactory long-term outcomes after TSA

fracture, in terms of RTP and subjective recovery scores, were achieved in both treatment groups after the data were adjusted for injury severity, age, and sex. The majority of the patients (75%) in this study were able to return to their preinjury levels of sport, which is an important and encouraging report for junior athletes who are highly likely to sustain an acute TSA fracture. Furthermore, there were good subjective long-term outcomes after open and arthroscopic surgery, which support the notion that surgeons may choose between these approaches based on their preference and competence. Nevertheless, when the 2 surgical approaches were compared, we found that open surgery with osteosuturing was associated with a quicker RTP time than the other method. In addition, open surgery with osteosuturing more frequently culminated in the patient returning to sport at the preinjury level than what was observed with arthroscopic screw fixation. These results, in particular, strengthen the evidence that open fixation with osteosutures is still a valid option for treating TSA fractures, regardless of the concrete advantages of arthroscopic knee surgery.

Most patients recover well after a TSA fracture.^{7,23,26-28,30} Stallone et al³⁰ reported good outcomes after operative and nonoperative care, although their study population was small and the majority of the participants were treated nonoperatively (23 vs 16). Furthermore, 78% of their patients returned to their previous levels of play in sports, and the mean Pedi-IKDC score was 96.4 ± 5.7 . In contrast, the mean IKDC score in our study was slightly lower (90.9 ± 12.7); however, the proportion of patients who returned to their previous levels of play in sports in the Stallone et al study (78%) is close to that achieved in our study (75.4%), even though all patients in this study were treated operatively. In a small series, 10 patients treated via arthroscopic reduction with fixation were followed up for 7 years, and they were all able to RTP at their preinjury

TABLE 3
Risk Factors for Inability to Return to Preinjury Level of Sport After Tibial Spine Fractures (N = 61)^a

	Crude		Adjusted	
	OR (95% CI)	P ^b	OR (95% CI)	P
Age	1.3 (1.0-1.7)	.057	1.1 (0.8-1.5)	.628
Male sex	2.9 (0.8-10.3)	.105	6.1 (1.0-37.2)	.052
Displacement				
Preoperative >5 mm	0.9 (0.3-2.9)	.839	1.2 (0.3-5.7)	.776
Postoperative >3 mm	7.2 (1.2-44.0)	.033	15.2 (1.2-194.9)	.037
Associated injuries	2.7 (0.6-11.5)	.189	3.3 (0.4-26.0)	.267
Screw fixation	1.5 (0.8-2.7)	.168	6.4 (1.1-36.0)	.035
Reoperation	0.7 (0.1-3.1)	.601	1.3 (0.2-10.7)	.824

^aBold P values indicate statistical significance ($P < .05$). OR, odds ratio.

^bStandardized nominate deviation test used for proportions; *t* test used for means.

TABLE 4
Risk of Unsatisfactory Subjective Knee-Specific Recovery and Impaired Quality of Life After Tibial Spine Fracture (N = 61)^a

	Impaired Knee-Specific Recovery ^b				Impaired Quality of Life ^c			
	Crude		Adjusted		Crude		Adjusted	
	OR (95% CI)	P	OR (95% CI)	P	OR (95% CI)	P	OR (95% CI)	P ^d
Age	1.1 (0.9-1.4)	.259	1.1 (0.8-1.4)	.572	1.0 (0.8-1.2)	.771	0.9 (0.7-1.2)	.470
Male sex	1.2 (0.4-3.4)	.773	1.6 (0.4-6.5)	.520	1.7 (0.6-5.1)	.278	2.3 (0.6-8.9)	.237
Displacement								
Preoperative >5 mm	0.4 (0.1-1.1)	.081	0.4 (0.1-1.5)	.157	0.8 (0.3-2.4)	.708	1.1 (0.3-4.0)	.874
Postoperative >3 mm	1.8 (0.3-10.0)	.480	1.2 (0.1-11.4)	.884	0.2 (0-2.1)	.206	0.2 (0.0-3.7)	.298
Associated injuries	1.5 (0.3-6.2)	.601	0.7 (0.1-5.6)	.714	0.6 (0.1-2.8)	.544	0.6 (0.1-4.5)	.649
Screw fixation	1.7 (0.6-4.8)	.353	1.0 (0.3-4.0)	.979	2.7 (1.0-7.7)	.062	2.5 (0.7-9.0)	.160
Reoperation	21.1 (2.4-184.8)	.006	19.0 (1.8-203)	.015	3.2 (0.7-14.3)	.127	5.3 (0.8-36.1)	.090

^aBold P values indicate statistical significance ($P < .05$). IKDC, International Knee Documentation Committee; EQ-5D-5L/Y, Euroqol 5 level Health-related questionnaire 5L for >18 years old, Y for <18 years old; OR, odds ratio; Pedi-IKDC, pediatric version (<18 years old) of International Knee Documentation Committee (IKDC) subjective Knee Form.

^bBy IKDC/Pedi-IKDC. Impaired recovery defined as score lower than age- and sex-matched normative scores.

^cBy EQ-5D-5L/EQ-5D-Y. Impaired quality of life categorized dichotomously (no problems vs any problems).

^dStandardized nominate deviation test used for proportions; *t* test used for means.

levels with full range of motion.²⁶ Nevertheless, because of the small number of participants in the series, only weak conclusions could be reached.

In this study, just 2 patients experienced such severe instability that they were not able to return to their previous levels of sport. One of these 2 patients was treated by open osteosuturing and the other by arthroscopic screw fixation. Both patients were still able to continue playing the same sports but at a lower national level. Patients who underwent reoperation had lower IKDC scores but experienced no further impediments to returning to their previous levels of play in sports. In the literature, pain and fear of reinjury have been the most common patient-reported reasons for failing to return to preinjury-level play,³⁰ which is consistent with the findings of this research.

It remains unclear which surgical approach is best for TSA fracture repair. In this study, children treated by arthroscopic surgery with screw fixation had a longer RTP than those treated by open osteosuturing. To our knowledge, the extant literature on the probable association between the surgical method and the RTP time after a TSA fracture is weak. However, it must be acknowledged that permission to RTP may be dependent on the outlook of the arthroscopic surgeons, which will differ among them, while some experts may stress the importance of overall recovery before permitting free exercise based on such particulars as quadriceps muscle strength and function, proprioception, and repair of the dynamic knee valgus.³¹ Because of the study design, the postoperative rehabilitation of the patients could not be adjusted for. Furthermore, in this study, more patients treated via arthroscopic screw fixation underwent reoperation (20.7%) than those treated via open osteosuturing (9.4%). The removal of the implants was a usual procedure, which is reasonable. The findings of this study agree with those of a study by Callahan et al,⁵ who reported that patients treated via screw fixation had an almost 3-fold higher risk of reoperation than those who underwent osteosuture fixation. Secondary removal operation may have been one explanation for the delayed RTP in the screw fixation group in this research.

Strengths and Limitations

The strengths of this study are its multicenter design, international scope, and long follow-up time. A further strength of this study is that 2 of most essential surgical procedures were selected for comparison: open reduction with osteosuturing and arthroscopy with screw fixation. The patients were evaluated using validated questionnaires. However, greater study is needed in the future, given that the number of patients who were completely unable to return to their preinjury sports was no more than 6.

The main limitation of this study is its retrospective design; furthermore, no randomization was performed, and the treatment approach for each case was independently decided by the treating surgeon. Another limitation is that, given the study design, no clinical examination was performed during the follow-up and the participation rate was not more than 53%. In addition, there may have been individual variations in the overall rehabilitation and recovery program for muscle

strengthening and balance training. Because of limited hospital records on postoperative rehabilitation, the results of this study could not be adjusted for the quality or intensity of rehabilitation. Another limitation is that several other fixation methods typically used in TSA fracture repair were not included for analysis in this study because of the small number of these cases: isolated patients treated via open reduction with screw or K-wire fixation and arthroscopic osteosuturing or K-wire fixation were excluded in adherence to the research plan. It is additionally worth recognizing that only 2 cases with clinically significant arthrofibrosis were found in this study. There may have been more patients with decreased range of motion who were not identified because the postoperative range of movement was not systematically evaluated. However, this is unlikely because arthrofibrosis is a considerable handicap, and such a clinically significant decrease in range of motion would have been reported during follow-up. It is possible that routine removal of the implants proceeded differently between the experts who performed the operations and the institutions at which they were performed, which may have affected the incidence of secondary operations. Another limitation is that there were few concomitant intra-articular injuries among the patients (14.8%). In light of the existing literature on this issue, this may have occurred because of the low rate of primary magnetic resonance imaging scans performed on the participants.^{22,26} Finally, a weakness of the study was that it focused on the patients' return to their preinjury levels of sport; the potential progress in their sport careers after TSA was not studied and would be the aim of the future research.

CONCLUSION

We found that good outcomes were achieved after a TSA fracture after open osteosuturing and arthroscopic screw fixation when the results were adjusted for severity of the injury, sex, and age. Open osteosuturing was associated with a quicker RTP time and a lower rate of failure to return to preinjury level of sport as compared with arthroscopic screw fixation. Higher postoperative displacement increased the risk of failure to return to preinjury sport level.

ACKNOWLEDGMENT

The authors acknowledge Mr Heikki Huhtamäki, MSc (statistician). This study was performed as official research by the European Paediatric Orthopaedic Society (EPOS) Sports Group.

REFERENCES

1. Ahmad CS, Stein BES, Jeshuran W, Necessian OA, Henry JH. Anterior cruciate ligament function after tibial eminence fracture in skeletally mature patients. *Am J Sports Med.* 2001;29(3):339-345.
2. Anderson AF, Irrgang JJ, Kocher MS, Mann BJ, Harrast JJ. The International Knee Documentation Committee Subjective Knee Evaluation Form: normative data. *Am J Sports Med.* 2006;34(1):128-135.

3. Axiball DP, Mitchell JJ, Mayo MH, et al. Epidemiology of anterior tibial spine fractures in young patients: a retrospective cohort study of 122 cases. *J Pediatr Orthop*. 2019;39(2):E87-E90.
4. Bogunovic L, Tarabichi M, Harris D, Wright R. Treatment of tibial eminence fractures: a systematic review. *J Knee Surg*. 2015;28(3):255-262.
5. Callahan M, Allen J, Flutie B, et al. Suture versus screw fixation of tibial spine fractures in children and adolescents: a comparative study. *Orthop J Sports Med*. 2019;7(11):2325967119881961.
6. Casalonga A, Bourelle S, Chalencon F, et al. Tibial intercondylar eminence fractures in children: the long-term perspective. *Orthop Traumatol Surg Res*. 2010;96(5):525-530.
7. Coyle C, Jagernauth S, Ramachandran M. Tibial eminence fractures in the paediatric population: a systematic review. *J Child Orthop*. 2014;8(2):149-159.
8. Fehnel DJ, Johnson R. Anterior cruciate injuries in the skeletally immature athlete. *Sports Med*. 2000;29(1):51-63.
9. Gans I, Baldwin KD, Ganley TJ. Treatment and management outcomes of tibial eminence fractures in pediatric patients: a systematic review. *Am J Sports Med*. 2014;42(7):1743-1750.
10. Herdman M, Gudex C, Lloyd A, et al. Development and preliminary testing of the new five-level version of EQ-5D (EQ-5D-5 L). *Qual Life Res*. 2011;20(10):1727-1736.
11. Hunter RE, Willis JA. Arthroscopic fixation of avulsion fractures of the tibial eminence: technique and outcome. *Arthroscopy*. 2004;20(2):113-121.
12. Irrgang JJ, Anderson AF, Boland AL, et al. Development and validation of the International Knee Documentation Committee Subjective Knee Form. *Am J Sports Med*. 2001;29(5):600-613.
13. Jackson TJ, Storey EP, Ganley TJ. The surgical management of tibial spine fractures in children: a survey of the Pediatric Orthopaedic Society of North America (POSNA). *J Pediatr Orthop*. 2019;39(8):e572-e577.
14. Kim YM, Kim SJ, Yang JY, Kim KC. Pullout reattachment of tibial avulsion fractures of the anterior cruciate ligament: a firm, effective suture-tying method using a tensioner. *Knee Surg Sports Traumatol Arthrosc*. 2007;15(7):847-850.
15. Kocher MS, Foreman ES, Micheli LJ. Laxity and functional outcome after arthroscopic reduction and internal fixation of displaced tibial spine fractures in children. *Arthroscopy*. 2003;19(10):1085-1090.
16. Kocher MS, Micheli LJ, Gerbino P, Hresko MT. Tibial eminence fractures in children: prevalence of meniscal entrapment. *Am J Sports Med*. 2003;31(3):404-407.
17. Kocher MS, Smith JT, Iversen MD, et al. Reliability, validity, and responsiveness of a modified International Knee Documentation Committee Subjective Knee Form (Pedi-IKDC) in children with knee disorders. *Am J Sports Med*. 2011;39(5):933-939.
18. Lehman RA Jr, Murphy KP, Machen MS, Kuklo TA. Modified arthroscopic suture fixation of a displaced tibial eminence fracture. *Arthroscopy*. 2003;19(2):E6.
19. Lubowitz JH, Elson WS, Guttman D. Part II: arthroscopic treatment of tibial plateau fractures—intercondylar eminence avulsion fractures. *Arthroscopy*. 2005;21(1):86-92.
20. Mahar AT, Duncan D, Oka R, Lowry A, Gillingham B, Chambers H. Biomechanical comparison of four different fixation techniques for pediatric tibial eminence avulsion fractures. *J Pediatr Orthop*. 2008;28(2):159-162.
21. Meyers MH, McKeever FM. Fracture of the intercondylar eminence of the tibia. *J Bone Joint Surg Am*. 1970;52(8):1677-1684.
22. Mitchell JJ, Sjoström R, Mansour AA, et al. Incidence of meniscal injury and chondral pathology in anterior tibial spine fractures of children. *J Pediatr Orthop*. 2015;35(2):130-135.
23. Najdi H, Thévenin-lemoine C, Sales de gauzy J, Accadbled F. Arthroscopic treatment of intercondylar eminence fractures with intraepiphyseal screws in children and adolescents. *Orthop Traumatol Surg Res*. 2016;102(4):447-451.
24. Nasreddine AY, Connell PL, Kalish LA, et al. The Pediatric International Knee Documentation Committee (Pedi-IKDC) Subjective Knee Evaluation Form: normative data. *Am J Sports Med*. 2017;45(3):527-534.
25. Osti L, Buda M, Soldati F, del Buono A, Osti R, Maffulli N. Arthroscopic treatment of tibial eminence fracture: a systematic review of different fixation methods. *Br Med Bull*. 2016;118(1):73-90.
26. Perugia D, Basigliani L, Vadalà A, Ferretti A. Clinical and radiological results of arthroscopically treated tibial spine fractures in childhood. *Int Orthop*. 2009;33(1):243-248.
27. Rhodes JT, Cannamela PC, Cruz AI, et al. Incidence of meniscal entrapment and associated knee injuries in tibial spine avulsions. *J Pediatr Orthop*. 2018;38(2):e38-e42.
28. Scrimshire AB, Gawad M, Davies R, George H. Management and outcomes of isolated paediatric tibial spine fractures. *Injury*. 2018;49(2):437-442.
29. Seon JK, Park SJ, Lee KB, et al. A clinical comparison of screw and suture fixation of anterior cruciate ligament tibial avulsion fractures. *Am J Sports Med*. 2009;37(12):2334-2339.
30. Stallone S, Selleri F, Trisolino G, et al. Good subjective outcomes, stable knee and high return to sport after tibial eminence avulsion fracture in children. *Children*. 2020;7(10):173.
31. Turati M, Boerci L, Piatti M, et al. What's new about etiopathogenesis of musculoskeletal injuries in adolescent athletes? *Minerva Pediatr (Torino)*. 2023;75(1):133-135.
32. Turati M, Rigamonti L, Giulivi A, et al. Management of anterior cruciate ligament tears in Tanner stage 1 and 2 children: a narrative review and treatment algorithm guided by ACL tear location. *J Sports Med Phys Fitness*. Published online October 5, 2021. doi:10.23736/S0022-4707.21.12783-5
33. Vander Have KL, Ganley TJ, Kocher MS, Herrera-Soto JA. Arthrofibrosis after surgical fixation of tibial eminence fractures in children and adolescents. *Am J Sports Med*. 2010;38(2):298-301.
34. Wiley JJ, Baxter MP. Tibial spine fractures in children. *Clin Orthop Relat Res*. 1990;(255):54-60.
35. Wilfinger C, Castellani C, Raith J, Pilhatsch A, Höllwarth ME, Weinberg AM. Nonoperative treatment of tibial spine fractures in children—38 patients with a minimum follow-up of 1 year. *J Orthop Trauma*. 2009;23(7):519-524.
36. Wille N, Badia X, Bonsel G, et al. Development of the EQ-5D-Y: a child-friendly version of the EQ-5D. *Qual Life Res*. 2010;19(6):875-886.
37. Zhao C, Bi Q, Bi M. Management of a type two avulsion fracture of the tibial intercondylar eminence in children: arthroscopic suture fixation versus conservative immobilization. *Int Orthop*. 2018;42(6):1363-1369.